

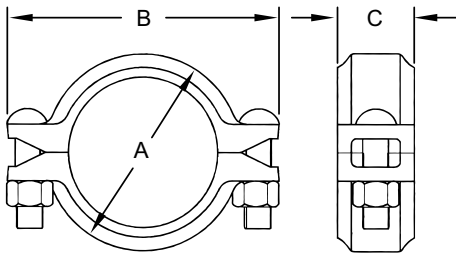
SS-8

stainless steel flexible coupling



ensure coupling bolt pads make metal-to-metal contact.

job name:	
job location:	
engineer:	
contractor:	
tag:	
po#:	
rep:	
wholesale dist.:	



the model SS-8 is a flexible coupling designed for a variety of general service and specialty applications. the SS-8 is supplied standard in CF8 (304) and CF8M (316) with 304 or 316 bolts and nuts.

for fire protection pressure rating, listing, and approval information, refer to data sheet B-42 or visit www.shurjoint.com for details or contact Shurjoint.

dimensions

NOMINAL SIZE	PIPE O.D.	MAX. WORKING PRESSURE (CWP)*	MAX. END LOAD (CWP)	AXIAL DISPLACEMENT †	DIMENSIONS			DEFLECTION DEGREE ‡	BOLT SIZE	WEIGHT
					A	B	C			
in mm	in mm	PSI Bar	lb kN	in mm	in mm	in mm	in mm	(°)	in	lb kg
1	1.315	500	679	0 - 0.06	2.19	3.45	1.73	2° - 45'	5/16 x1-1/2	1.1
25	33.4	35	3.02	0 - 1.6	55.7	87.5	44.0			0.5
1-1/4	1.660	500	1082	0 - 0.06	2.54	3.85	1.73	2° - 10'	5/16 x1-1/2	1.1
32	42.2	35	4.81	0 - 1.6	64.6	97.8	44.0			0.5
1-1/2	1.900	500	1417	0 - 0.06	2.79	4.14	1.73	1° - 54'	5/16 x1-1/2	1.1
40	48.3	35	6.30	0 - 1.6	70.8	105.1	44.0			0.5
2	2.375	500	2214	0 - 0.06	3.28	4.88	1.73	1° - 31'	3/8 x 2-1/8	1.5
50	60.3	35	9.85	0 - 1.6	83.0	124.0	44.0			0.7
2-1/2	2.875	500	3244	0 - 0.06	3.79	5.51	1.73	1° - 15'	3/8 x 2-1/8	1.8
65	73.0	35	14.43	0 - 1.6	96.2	139.9	44.0			0.8
3	3.500	500	4808	0 - 0.06	4.39	6.18	1.73	1° - 02'	3/8 x 2-1/8	2.2
80	88.9	35	21.39	0 - 1.6	111.0	157.0	44.0			1.0
4	4.500	325	5166	0 - 0.13	5.62	7.87	1.97	1° - 36'	1/2 x 3	3.7
100	114.3	22	22.98	0 - 3.2	143.0	200.0	50.0			1.7
5	5.563	200	4859	0 - 0.13	6.72	8.90	1.97	1° - 18'	1/2 x 3	4.8
125	141.3	14	21.61	0 - 3.2	170.8	226.1	50.0			2.2
6	6.625	200	6891	0 - 0.13	7.80	9.96	2.09	1° - 05'	1/2 x 3	6.4
150	168.3	14	30.65	0 - 3.2	198.0	253.1	53.0			2.9
8	8.625	200	11386	0 - 0.13	10.04	13.27	2.44	0° - 50'	5/8 x 3-1/2	14.1
200	219.1	14	50.65	0 - 3.2	255.0	337.0	62.0			6.4

**the working pressure shown is based on roll-grooved Sch. 40S pipe.

† allowable axial displacement and angular movement (deflection) figures are for roll grooved standard steel pipe. Values for cut grooved pipe will be double that of roll grooved. these values are maximums; for design and installation purposes these figures should be reduced by: 50% for 3/4"/DN20 - 3-1/2"/DN90; 25% for 4"/DN100 and larger to compensate for jobsite conditions.

material specifications

housing:

- type 304 Stainless steel to ASTM A351 CF8 or A743 Gr. CF8
- type 316 to ASTM A743 CF8M
- type 316L to ASTM A743 CF3M
- type 316Ti to ASTM A240
- duplex 2205 to ASTM A890 4A
- super Duplex 2507 to ASTM A890 5A
- duplex 254SMO to ASTM A351 CK3McuN

rubber gasket:

grade "E-pw" EPDM (color code: double green stripe)

- good for cold & hot water up to +230°F (+110°C). also good for services for water with acid, water with chlorine, chloramine, deionized water, seawater and waste water, dilute acids, oil-free air and many chemicals.
- good for cold +86°F (+30°C) and hot +180°F (+82°C) potable water services. EPDM is UL classified per NSF/ANSI 61 & NSF/ANSI 372.
- **not recommended for petroleum oils, minerals oils, solvents and aromatic hydrocarbons.**
- maximum temperature range: -30°F (-34°C) to +230°F (+110°C).

*EPDM gaskets for water services are not recommended for steam services unless couplings or components are accessible for frequent gasket replacement.

(option) grade "T" nitrile (color code: orange stripe)

- recommended for petroleum products, air with oil vapors, vegetable and mineral oils within the specified temperature range. also good for water services under +150°F (+66°C)
- hot dip zinc galvanized (optional). temperature range: -20°F to +180°F (-29°C to +82°C)
- **do not use for hot water above +150°F (+66°C) or hot dry air above +140°F (+60°C).**

other options

grade "O" - fluoroelastomer

grade "L" - silicone

- for additional details contact Shurjoint.

bolts & nuts:

- type 304 Stainless steel track bolts to A193 B-8 with heavy duty nuts to ASTM A194 B8, molybdenum disulfide (MoS₂) coated.
- type 316 stainless steel track bolts to A193 B-8M with heavy duty nuts to ASTM B8M, Molybdenum disulfide (MoS₂) coated.

performance data

the following tables show maximum cold working pressures (CWP) of Shurjoint stainless steel couplings used on stainless steel pipes. in general it is more difficult to achieve defined groove corners on stainless steel pipe than on carbon steel pipe. always select the correct roll set for the pipe being grooved and process grooves as defined as possible. contact your roll-groove tool manufacturer for recommendations.

NOM. SIZE	CUT-GROOVED		ROLL-GROOVED	
	SCH. 40S	SCH. 40S	SCH. 10S	SCH. 5S
in	psi	psi	psi	psi
mm	Bar	Bar	Bar	Bar
1	500	750	500	225
25	35	51.71	34.47	16
1-1/4	500	750	500	225
32	35	51.71	34.47	16
1-1/2	500	750	500	225
40	35	51.71	34.47	16
2	500	750	500	225
50	35	51.71	34.47	16
2-1/2	500	750	500	225
65	35	51.71	34.47	16
3	500	750	400	225
80	35	51.71	27.58	16
4	325	450	350	200
100	22	31.03	24.13	14
5	200	450	300	125
125	14	31.03	20.68	9
6	200	300	300	125
150	14	20.68	20.68	9
8	200	200	200	125
200	14	14	14	9

proof test pressure: 1.5 times the listed working pressure.
burst pressure: 3 times the listed working pressure.

general notes

- maximum working pressure (CWP) listed is the maximum cold water pressure for general piping services tested to ASTM F1476 and or AWWA C606 methods. figures listed are based on roll- or cut-grooved standard wall carbon steel pipe. for other pipe schedules or pipe materials, contact Shurjoint for additional information.
- max. end load is calculated based on the maximum working pressure (CWP).
- field joint test: for one time only the system may be tested hydrostatically at 1.5 times the maximum working pressure listed (AWWA C606 5.2.3).
- warning: piping systems must always be depressurized and drained before attempting disassembly and or removal of any components.
- the 10 Year Limited Warranty applies to manufacturing defects only and does not cover severe service/temperature applications or wear parts.
- Shurjoint reserves the right to change specifications, designs and or standard without notice and without incurring any obligations.