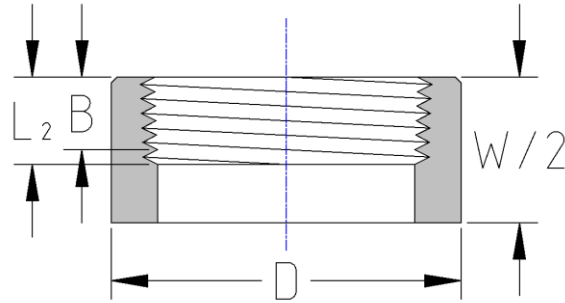




Threaded Half Coupling
6000# Forged Steel
Inches / Pounds



Nominal Pipe size	D	W/2	B**	L2**	Approximate Weight (in Pounds)
1/8	0.88	0.62	0.25	0.2639	0.08
1/4	1.00	0.69	0.32	0.4018	0.10
3/8	1.25	0.75	0.36	0.4078	0.17
1/2	1.50	0.94	0.43	0.5337	0.33
3/4	1.75	1.00	0.50	0.5457	0.44
1	2.25	1.19	0.58	0.6828	0.85
1 1/4	2.50	1.31	0.67	0.7068	1.10
1 1/2	3.00	1.56	0.70	0.7235	1.80
2	3.62	1.69	0.75	0.7565	2.60

***ASME B16.11**

****Dimension B is minimum length of perfect thread. The length of useful thread (B plus threads with fully formed roots and flat crests) shall not be less than L₂ (effective length of external thread) required by ASME B1.20.1**