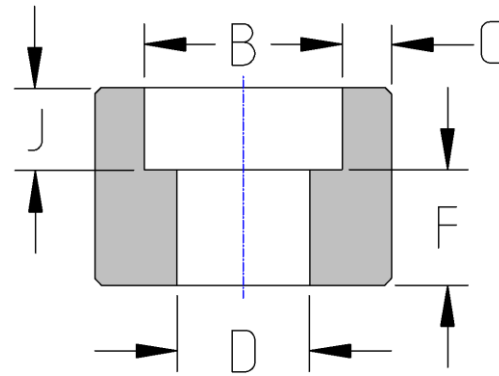




Socket Weld Half Coupling
6000# Forged Steel
Inches / Pounds



Nominal pipe size	B Max. Min.	C Avg. Min.	D Max. Min.	J Min.	F Tol. ±	Approximate Weight (in Pounds)
1/2	0.875	0.235	0.494	0.38	0.62	0.38
	0.855	0.204	0.434		0.03	
3/4	1.085	0.274	0.642	0.50	0.69	1.63
	1.065	0.238	0.582		0.06	
1	1.350	0.312	0.845	0.50	0.88	1.26
	1.330	0.273	0.785		0.06	
1 1/4	1.695	0.312	1.190	0.50	0.94	1.44
	1.675	0.273	1.130		0.66	
1 1/2	1.935	0.351	1.308	0.50	1.12	2.00
	1.915	0.307	1.130		0.08	
2	2.426	0.430	1.717	0.62	1.19	3.88
	2.406	0.374	1.657		0.08	

***ASME B16.11**