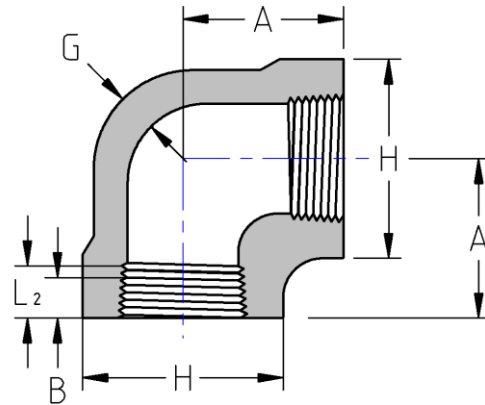




Threaded 90° Elbow
3000# Forged Steel
Inches / Pounds



Nominal pipe size	A	H	G (Minimum)	B**	L ₂ ** (Minimum)	Approximate Weight (in Pounds)
1/8	0.81	0.88	0.125	0.25	0.2639	0.27
1/4	0.97	1.00	0.130	0.32	0.4018	0.37
3/8	1.12	1.31	0.138	0.36	0.4078	0.63
1/2	1.31	1.50	0.161	0.43	0.5337	0.89
3/4	1.50	1.81	0.170	0.50	0.5457	1.41
1	1.75	2.19	0.196	0.58	0.6828	2.22
1 1/4	2.00	2.44	0.208	0.67	0.7068	2.49
1 1/2	2.38	2.97	0.219	0.70	0.7235	3.70
2	2.50	3.31	0.281	0.75	0.7565	5.50
2 1/2	3.25	4.00	0.301	0.93	1.1380	11.2
3	3.75	4.75	0.348	1.02	1.2000	14.3
4	4.50	6.00	0.440	1.09	1.3000	31.2

***ASME B16.11**

****Dimension B is minimum length of perfect thread. The length of useful thread (B plus threads with fully formed roots and flat crests) shall not be less than L₂ (effective length of external thread) required by ASME B1.20.1**