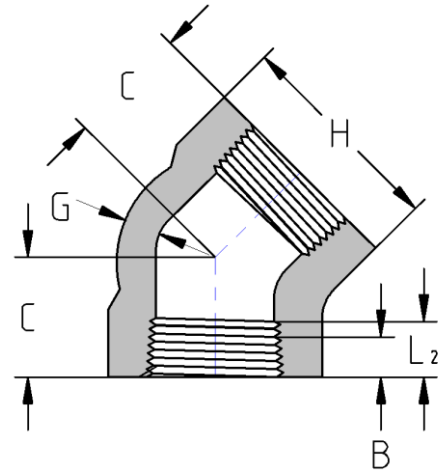




Threaded 45° Elbow
3000# Forged Steel
Inches / Pounds



Size	C	H	G (min)	B**	L ₂ ** (min)	Approximate Weight (in Pounds)
1/4	0.75	1.00	0.125	0.32	0.4018	0.27
3/8	0.88	1.31	0.125	0.36	0.4078	0.51
1/2	1.00	1.50	0.125	0.43	0.5337	0.72
3/4	1.12	1.81	0.125	0.50	0.5457	1.20
1	1.31	2.19	0.145	0.58	0.6828	1.94
1 1/4	1.38	2.44	0.153	0.67	0.7068	2.18
1 1/2	1.69	2.97	0.158	0.70	0.7235	3.50
2	1.72	3.31	0.168	0.75	0.7565	4.71
2 1/2	2.06	4.00	0.221	0.93	1.1380	7.35
3	2.50	4.75	0.236	1.02	1.2000	12.6

***ASME B16.11**

****Dimension B is minimum length of perfect thread. The length of useful thread (B plus threads with fully formed roots and flat crests) shall not be less than L₂ (effective length of external thread) required by ASME B1.20.1**