

**SFP 619**  
**EFFECTIVE JUNE 3, 2019**  
SUPERSEDES SFP 818



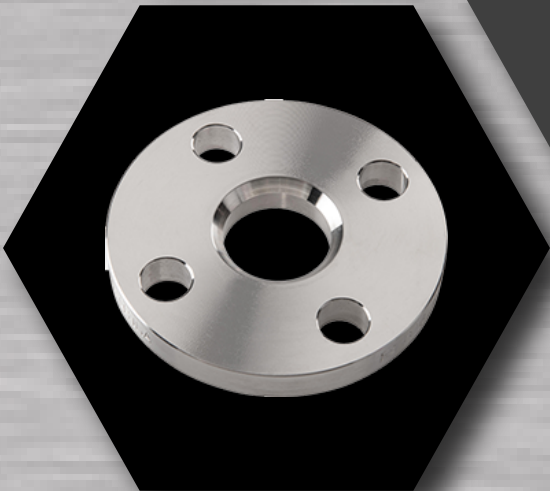
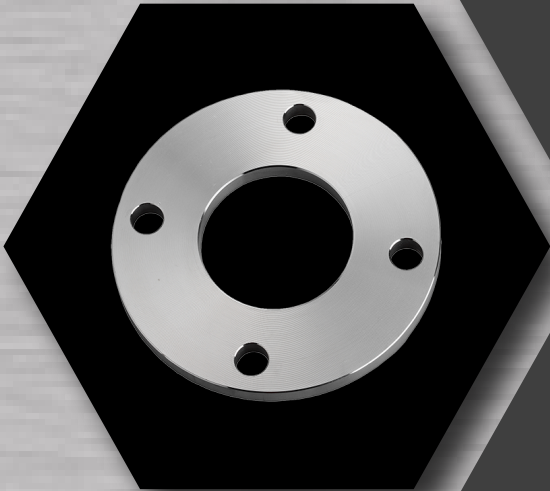
# STAINLESS STEEL PLATE FLANGES

**BLIND**

**TUBE OD SLIP-ON**

**IPS SLIP-ON BEVEL x SQUARE**

**IPS SLIP-ON SQUARE x SQUARE**



# BENEFITS & FEATURES

## BLIND PLATE FLANGE

- Size Range: 1" - 12"
- Manufactured from ASTM A240/SA240 stainless steel plate
- Available in 304/L & 316/L
- Used in low pressure applications to prevent flow and seal the end of a line
- Serrated surface to enhance sealing properties
- Provides for easy expansion of the piping system
- Economical alternative to heavier ANSI flanges
- Low carbon to ensure greater resistance to corrosion

## TUBE OD SLIP-ON PLATE FLANGE

- Size Range: 1" - 12"
- Manufactured from ASTM A240/SA240 stainless steel plate
- Available in 304/L & 316/L
- Suitable for low pressure, less critical applications
- Serrated surface to enhance sealing properties
- Economical alternative to heavier ANSI flanges
- Low carbon to ensure greater resistance to corrosion

## IPS SLIP-ON BEVEL X SQUARE PLATE FLANGE

- Size Range: 1" - 12"
- Manufactured from ASTM A240/SA240 stainless steel plate
- Available in 304/L & 316/L
- Suitable for low pressure, less critical applications
- Serrated surface to enhance sealing properties
- ID beveled on one side to accommodate Type "A" Stub Ends
- Economical alternative to heavier ANSI flanges
- Low carbon to ensure greater resistance to corrosion

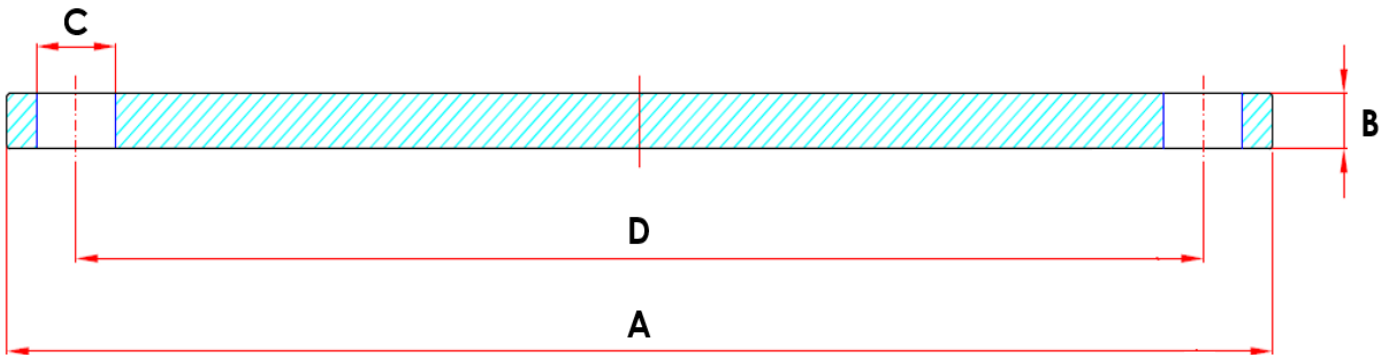
## IPS SLIP-ON SQUARE X SQUARE PLATE FLANGE

- Size Range: 1" - 12"
- Manufactured from ASTM A240/SA240 stainless steel plate
- Available in 304/L & 316/L
- Suitable for low pressure, less critical applications
- Serrated surface to enhance sealing properties
- Economical alternative to heavier ANSI flanges
- Low carbon to ensure greater resistance to corrosion

# BLIND PLATE FLANGE



Please Note: Pictured is a flange with 4 bolt holes. The number of bolt holes change based on the diameter of the flange.

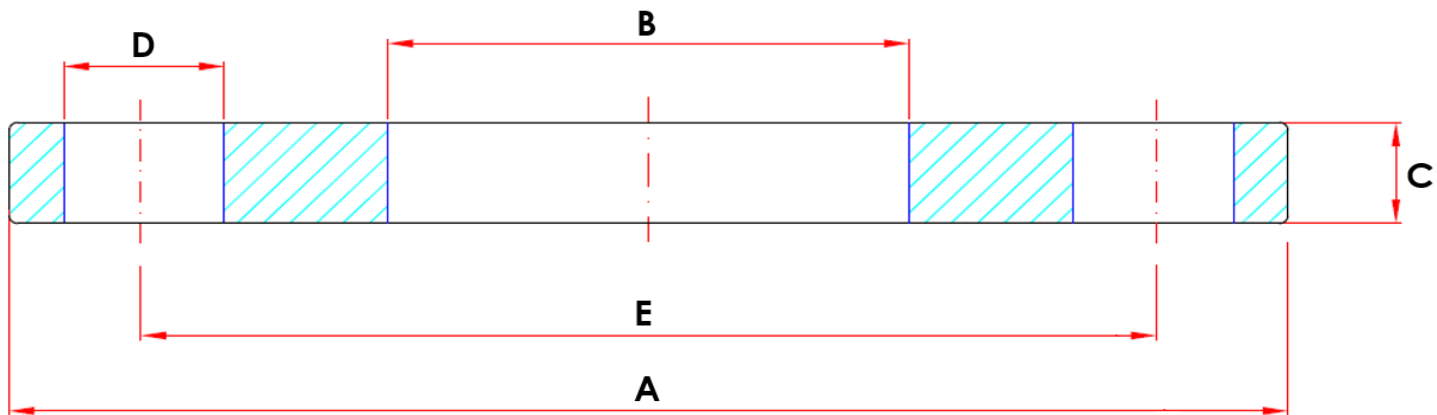


SIZE (IN)	PART NUMBERS		A - OUTSIDE DIAMETER (IN)	B - THICKNESS (IN)	C - DIAMETER OF BOLT HOLES (IN)	D - BOLT CIRCLE (IN)	NUMBER OF BOLT HOLES	WEIGHT (LB)
	304	316						
1"	AC460BL-16	AC660BL-16	4.25	0.5	0.62	3.12	4	1.96
1-1/4"	AC460BL-20	AC660BL-20	4.62	0.5	0.62	3.50	4	2.36
1-1/2"	AC460BL-24	AC660BL-24	5.00	0.5	0.62	3.88	4	2.78
2"	AC460BL-32	AC660BL-32	6.00	0.5	0.75	4.75	4	4.01
2-1/2"	AC460BL-40	AC660BL-40	7.00	0.5	0.75	5.50	4	5.56
3"	AC460BL-48	AC660BL-48	7.50	0.5	0.75	6.00	4	6.39
4"	AC460BL-64	AC660BL-64	9.00	0.5	0.75	7.50	8	9.06
5"	AC460BL-80	AC660BL-80	10.00	0.5	0.88	8.50	8	11.13
6"	AC460BL-96	AC660BL-96	11.00	0.5	0.88	9.50	8	13.60
8"	AC460BL-128	AC660BL-128	13.50	0.5	0.88	11.75	8	20.81
10"	AC460BL-160	AC660BL-160	16.00	0.5	1.00	14.25	12	42.75
12"	AC460BL-192	AC660BL-192	19.00	0.5	1.00	17.00	12	61.29

# TUBE OD SLIP-ON PLATE FLANGE



Please Note: Pictured is a flange with 4 bolt holes. The number of bolt holes change based on the diameter of the flange.

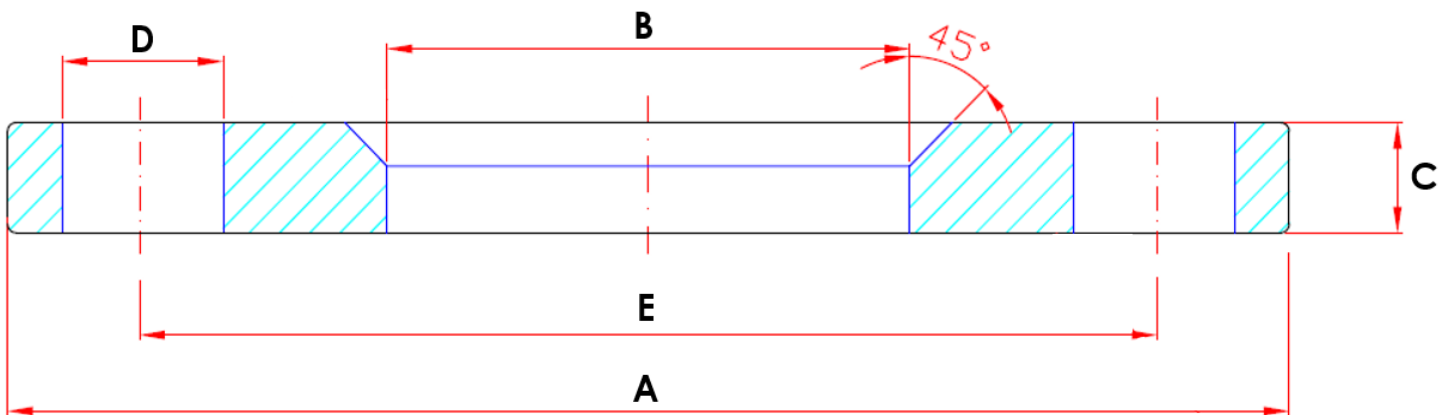


SIZE (IN)	PART NUMBERS		A - OUTSIDE DIAMETER (IN)	B - INSIDE DIAMETER (IN)	C - THICKNESS (IN)	D - DIAMETER OF BOLT HOLES (IN)	E - BOLT CIRCLE (IN)	NUMBER OF BOLT HOLES	WEIGHT (LB)
	304	316							
1"	AC460T-16	AC660T-16	4.25	1.063	0.5	0.62	3.12	4	1.74
1-1/4"	AC460T-20	AC660T-20	4.62	1.313	0.5	0.62	3.50	4	2.01
1-1/2"	AC460T-24	AC660T-24	5.00	1.563	0.5	0.62	3.88	4	2.34
2"	AC460T-32	AC660T-32	6.00	2.063	0.5	0.75	4.75	4	3.28
2-1/2"	AC460T-40	AC660T-40	7.00	2.563	0.5	0.75	5.50	4	4.52
3"	AC460T-48	AC660T-48	7.50	3.063	0.5	0.75	6.00	4	4.89
4"	AC460T-64	AC660T-64	9.00	4.063	0.5	0.75	7.50	8	6.59
5"	AC460T-80	AC660T-80	10.00	5.063	0.5	0.88	8.50	8	7.32
6"	AC460T-96	AC660T-96	11.00	6.063	0.5	0.88	9.50	8	8.27
8"	AC460T-128	AC660T-128	13.50	8.063	0.5	0.88	11.75	8	11.86
10"	AC460T-160	AC660T-160	16.00	10.063	0.5	1.00	14.25	12	18.39
12"	AC460T-192	AC660T-192	19.00	12.063	0.5	1.00	17.00	12	26.87

# IPS SLIP-ON BEVEL X SQUARE PLATE FLANGE



Please Note: Pictured is a flange with 4 bolt holes. The number of bolt holes change based on the diameter of the flange.

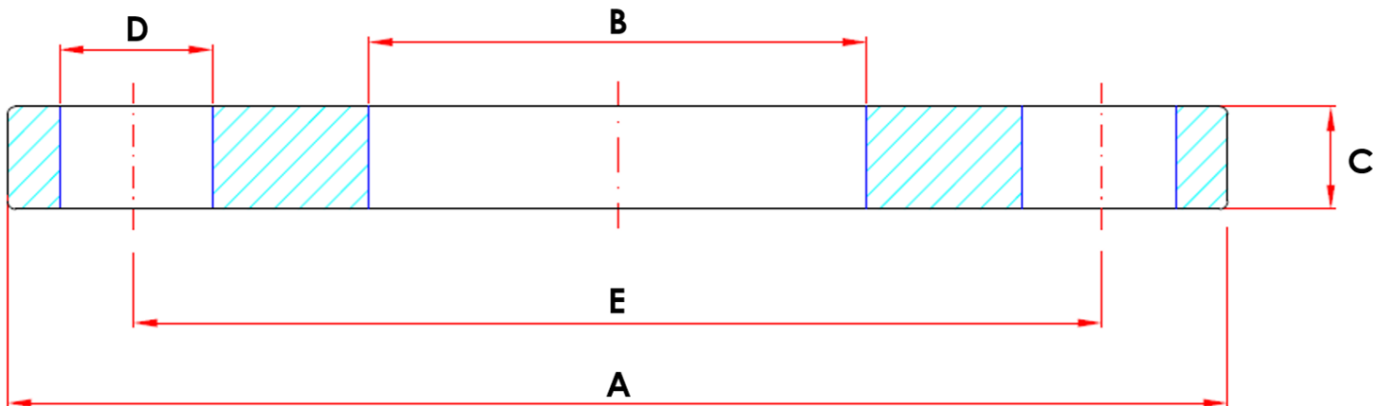


SIZE (IN)	PART NUMBERS		A - OUTSIDE DIAMETER (IN)	B - INSIDE DIAMETER (IN)	C - THICKNESS (IN)	D - DIAMETER OF BOLT HOLES (IN)	E - BOLT CIRCLE (IN)	NUMBER OF BOLT HOLES	WEIGHT (LB)
	304	316							
1"	AC460L-16	AC660L-16	4.25	1.36	0.5	0.62	3.12	4	1.74
1-1/4"	AC460L-20	AC660L-20	4.62	1.70	0.5	0.62	3.50	4	2.01
1-1/2"	AC460L-24	AC660L-24	5.00	1.94	0.5	0.62	3.88	4	2.31
2"	AC460L-32	AC660L-32	6.00	2.44	0.5	0.75	4.75	4	3.28
2-1/2"	AC460L-40	AC660L-40	7.00	2.94	0.5	0.75	5.50	4	4.52
3"	AC460L-48	AC660L-48	7.50	3.57	0.5	0.75	6.00	4	4.89
4"	AC460L-64	AC660L-64	9.00	4.60	0.5	0.75	7.50	8	6.59
5"	AC460L-80	AC660L-80	10.00	5.66	0.5	0.88	8.50	8	7.32
6"	AC460L-96	AC660L-96	11.00	6.72	0.5	0.88	9.50	8	8.27
8"	AC460L-128	AC660L-128	13.50	8.72	0.5	0.88	11.75	8	11.86
10"	AC460L-160	AC660L-160	16.00	10.88	0.5	1.00	14.25	12	18.43
12"	AC460L-192	AC660L-192	19.00	12.88	0.5	1.00	17.00	12	26.87

# IPS SLIP-ON SQUARE X SQUARE PLATE FLANGE

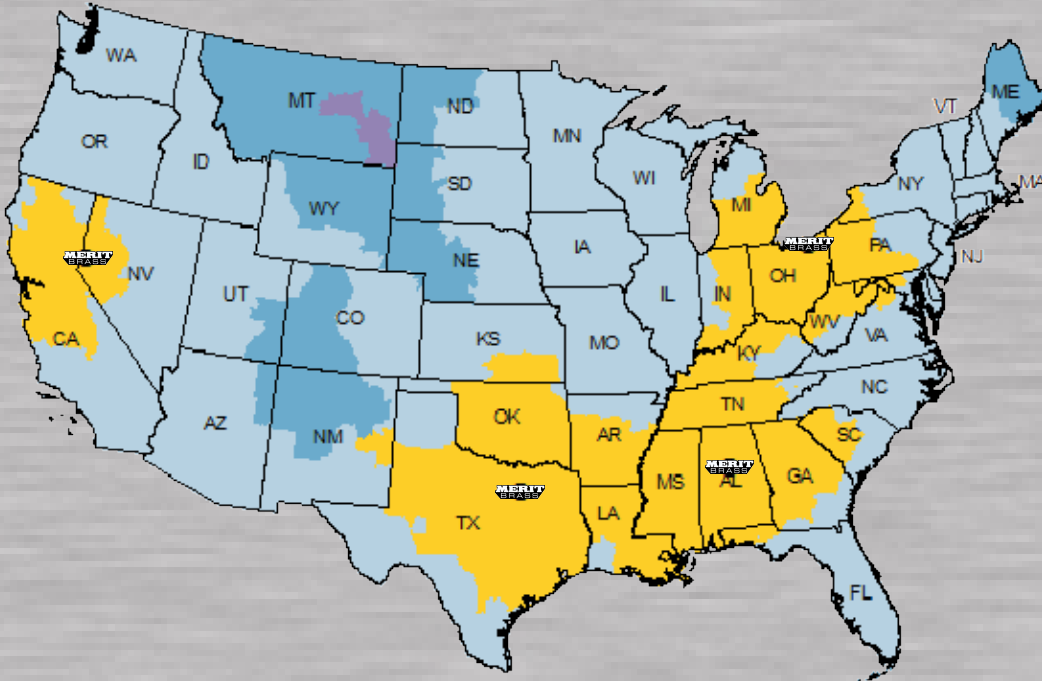


Please Note: Pictured is a flange with 8 bolt holes. The number of bolt holes change based on the diameter of the flange.



SIZE (IN)	PART NUMBERS		A - OUTSIDE DIAMETER (IN)	B - INSIDE DIAMETER (IN)	C - THICKNESS (IN)	D - DIAMETER OF BOLT HOLES (IN)	E - BOLT CIRCLE (IN)	NUMBER OF BOLT HOLES	WEIGHT (LB)
	304	316							
1"	AC460NB-16	AC660NB-16	4.25	1.36	0.5	0.62	3.12	4	1.74
1-1/4"	AC460NB-20	AC660NB-20	4.62	1.70	0.5	0.62	3.50	4	2.01
1-1/2"	AC460NB-24	AC660NB-24	5.00	1.94	0.5	0.62	3.88	4	2.31
2"	AC460NB-32	AC660NB-32	6.00	2.44	0.5	0.75	4.75	4	3.28
2-1/2"	AC460NB-40	AC660NB-40	7.00	2.94	0.5	0.75	5.50	4	4.52
3"	AC460NB-48	AC660NB-48	7.50	3.57	0.5	0.75	6.00	4	4.89
4"	AC460NB-64	AC660NB-64	9.00	4.60	0.5	0.75	7.50	8	6.59
5"	AC460NB-80	AC660NB-80	10.00	5.66	0.5	0.88	8.50	8	7.32
6"	AC460NB-96	AC660NB-96	11.00	6.72	0.5	0.88	9.50	8	8.27
8"	AC460NB-128	AC660NB-128	13.50	8.72	0.5	0.88	11.75	8	11.86
10"	AC460NB-160	AC660NB-160	16.00	10.88	0.5	1.00	14.25	12	18.43
12"	AC460NB-192	AC660NB-192	19.00	12.88	0.5	1.00	17.00	12	26.87

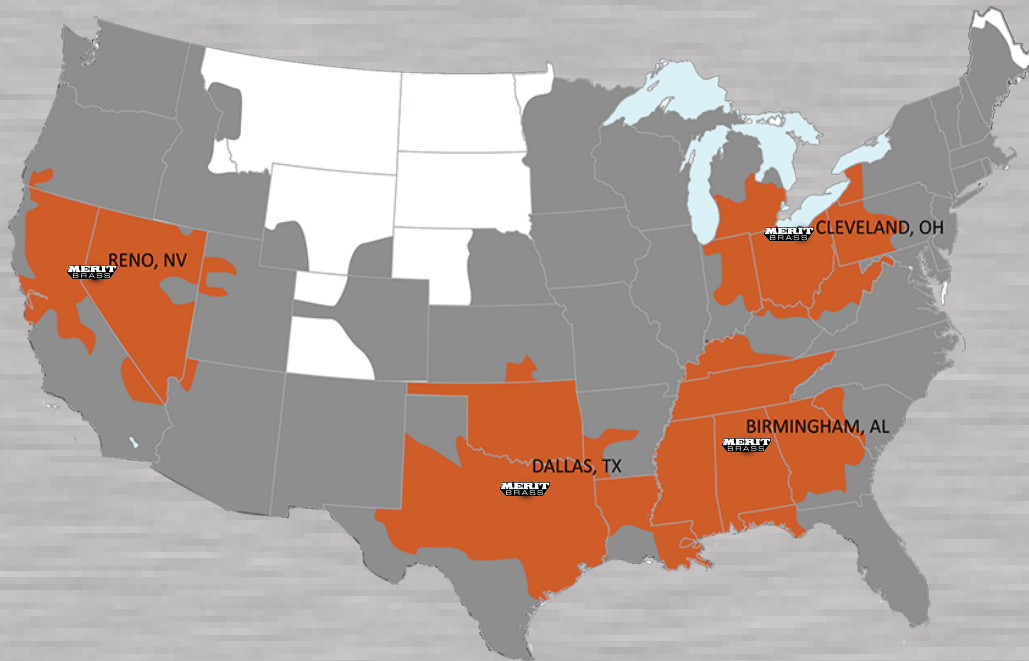
# SHIPPING TIMES



## FedEx



\*FedEx is Merit's Primary Carrier



## UPS



### Cleveland Headquarters

One Merit Drive/PO Box 43127  
 Cleveland, OH 44143  
 800.726.9800 (t) | 800.726.9880 (f)  
 sales@meritbrass.com

### Dallas Distribution Center

10614 King William Dr.  
 Dallas, TX 75220  
 877.259.2591 (t) | 877.259.2596 (f)  
 mbsalesTX@meritbrass.com

### Sparks Distribution Center

200 Vista Blvd., Suite #106  
 Sparks, NV 89434  
 877.711. RENO (7366) (t) | 877.376.0093 (f)  
 mbsalesNV@meritbrass.com

### Birmingham Distribution Center

220 Oxmoor Court  
 Birmingham, AL 35209  
 855.912.0409 (t) | 866.668.9168 (f)  
 mbsalesAL@meritbrass.com

Merit Brass Headquarters Has An ISO 9001:2015 Registered Quality Management System

www.meritbrass.com • www.mbwebxpress.com

Follow Us On Social Media

