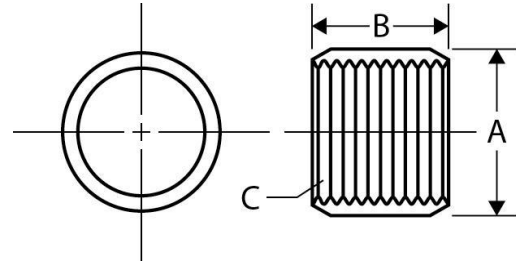




Half Coupling  
**Standard Merchant**  
Inches / Pounds



Nominal Pipe Size	A Coupling OD	B Coupling Length	C Threads per Inch	Approx. Weight per 100 pieces (in Pounds)
1/8	.563	.344	27	2
1/4	.719	.531	18	4
3/8	.875	.531	18	5
1/2	1.063	.719	14	8
3/4	1.313	.750	14	12
1	1.576	.937	11-1/2	18
1 1/4	1.900	.969	11-1/2	23
1 1/2	2.200	.969	11-1/2	32
2	2.750	1.000	11-1/2	47
2 1/2	3.250	1.500	8	96
3	4.000	1.563	8	160
3 1/2	4.625	1.625	8	222
4	5.000	1.687	8	211
5	6.296	1.750	8	380
6	7.390	1.875	8	528

***\*Merchant Steel Couplings meet the following specifications: ASTM: A865 ANSI: B1.20.1***

***\*ASTM specifications require standard Merchant Couplings 1/8" – 2" to be Straight Tapped and 2-1/2 - 6" to be Taper Tapped.***

***\*Half Couplings are chamfered on one end, the other end is square cut.***