

Propane

Products

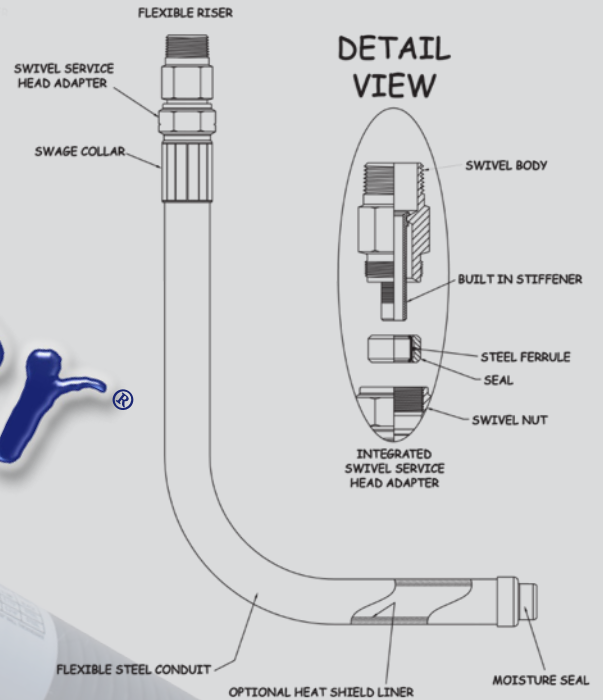
CF Chicago Fittings



www.chicagofittings.com

A Series of Flexible Anodeless Risers for the Propane Gas Market

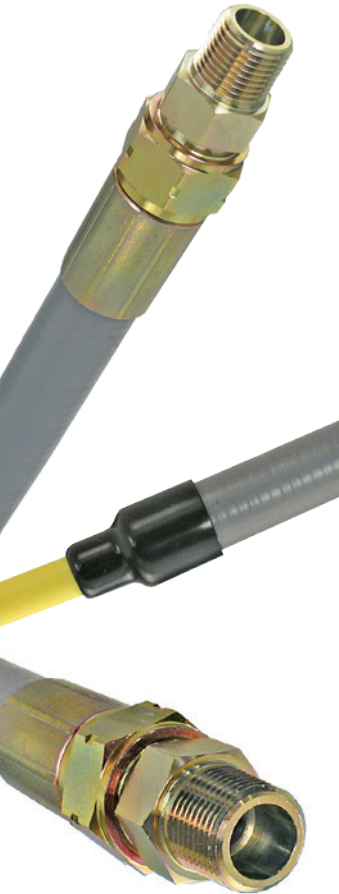
X-Riser®



Features & Benefits

- **NO UNDERGROUND JOINTS** - One solid service line from point-to-point with above ground terminations.
- **NO CHAMFERING** - A simple clean cut is all that is required.
- **BI-DIRECTIONAL SEAL** assembly CAN'T be installed improperly where some competitors multiple internal components MUST have proper order and orientation to function properly.
- **NO TORQUE REQUIREMENTS** - All X-Risers incorporate the "bottoming" or "positive stop" design. Simply tighten the compression nut until it is metal-to-metal and you are done.
- **SIMPLE DESIGN** can be installed with one flat jaw wrench extending the life of protective coatings commonly flawed or removed by pipe wrenches.
- **INTEGRAL BARBED STIFFENERS** are permanent (not loose) for additional pull out resistance.
- **QUALITY** - Chicago Fittings products are CNC machined from solid bar stock (not castings) providing high quality product with the most precise threads and design flexibility.

X-Riser®



Flexible Anodeless Risers with Heat Shield/Liner for Propane Use

Part #	Outlet	Tube Size	Wall	SDR	Conduit Length (in.)
XR-10B-8-36-L-ZDC	1/2" MPT	1/2"CTS	.090"	7	36
XR-10B-8-72-L-ZDC	1/2" MPT	1/2"CTS	.090"	7	72
XR-10B-8-96-L-ZDC	1/2" MPT	1/2"CTS	.090"	7	96
XR-10B-8-144-L-ZDC	1/2" MPT	1/2"CTS	.090"	7	144
XR-10B-8SN-36-L-ZDC	1/2" FEMALE SWIVEL 45° FLARE	1/2"CTS	.090"	7	36
XR-10B-8SN-72-L-ZDC	1/2" FEMALE SWIVEL 45° FLARE	1/2"CTS	.090"	7	72
XR-10B-8SN-96-L-ZDC	1/2" FEMALE SWIVEL 45° FLARE	1/2"CTS	.090"	7	96
XR-10B-8SN-144-L-ZDC	1/2" FEMALE SWIVEL 45° FLARE	1/2"CTS	.090"	7	144
XR-10B-12-36-L-ZDC	3/4" MPT	1/2"CTS	.090"	7	36
XR-10B-12-72-L-ZDC	3/4" MPT	1/2"CTS	.090"	7	72
XR-10B-12-96-L-ZDC	3/4" MPT	1/2"CTS	.090"	7	96
XR-10B-12-144-L-ZDC	3/4" MPT	1/2"CTS	.090"	7	144
XR-17C-10SN-36-L-ZDC	5/8" FEMALE SWIVEL 45° FLARE	3/4" IPS	.095"	11	36
XR-17C-10SN-72-L-ZDC	5/8" FEMALE SWIVEL 45° FLARE	3/4" IPS	.095"	11	72
XR-17C-10SN-96-L-ZDC	5/8" FEMALE SWIVEL 45° FLARE	3/4" IPS	.095"	11	96
XR-17C-12-36-L-ZDC	3/4" MPT	3/4" IPS	.095"	11	36
XR-17C-12-72-L-ZDC	3/4" MPT	3/4" IPS	.095"	11	72
XR-17C-12-96-L-ZDC	3/4" MPT	3/4" IPS	.095"	11	96

A597 Series



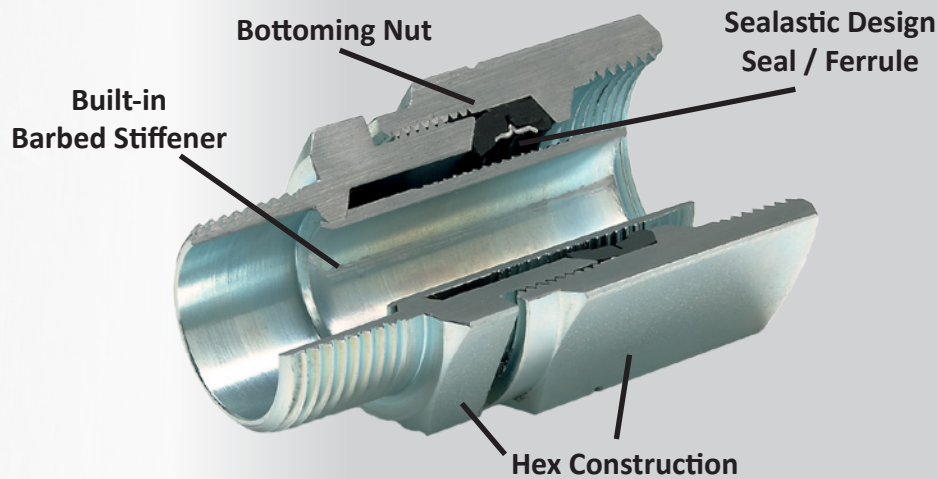
Replacement X-Riser Service Head Top Half Assemblies with Integral Stiffener

Part #	Outlet	Tube Size	Wall	MPT
A597-10-8	1/2" MPT	1/2"CTS	.090"	7
A597-10-8-SW	1/2" Female Swivel 45° Flare	1/2"CTS	.090"	7
A597-10-12	3/4" MPT	1/2"CTS	.090"	7
A597-17-10-SW	5/8" Female Swivel 45° Flare	3/4" IPS	.095"	11
A597-17-12	3/4" MPT	3/4" IPS	.095"	11

Note: The above part numbers are directly interchangeable with any X-Riser of the same corresponding tube size.

Rugged Construction

Ensures Lasting Field Performance



Features

- Sealastic Design
- Bottoming Nut (Positive Stop)
- Bi-Directional Seal/Ferrule Assembly
- Solid Bar Stock Construction
- Ease of Assembly
- Tube Preparation

Benefits

- Rugged Leak Resistant Design utilizing a molded rubber seal/ferrule assembly and integral stiffener
- Self-Seating Design eliminates the need for torque measurement
- One Piece Design eliminates worries of "Order & Orientation" of multiple internal components
- CNC Machined from solid bar stock eliminates concerns associated with malleable castings
- Hex Construction Allows for use of flat jawed wrenches and greatly reduces damage to finishes compared to that of bite-style wrenches
- A Clean, Burr-Free Cut is all that's required (No Chamfering Tools or Fusion Equipment)



Note: Sealastic products are manufactured under U.S. and foreign patents.
Note: Fittings may be reused only if new seal and ferrule is inserted.



Note: When pipe movement out of the coupling might occur as a result of forces other than that caused by internal line pressure of 125 psi maximum, proper anchorage of the pipe must be provided.



The information presented herein and other information from Chicago Fittings and its authorized distributors including but not limited to the description of the goods is for the sole purpose of identifying the goods for further investigation by the users having technical expertise and shall not be deemed to create an express warranty that the goods shall conform to any such description and any information provided shall not be deemed to be part of the basis of bargain of sale of such merchandise. Because every application of the goods is unique, Chicago Fittings makes no and **DISCLAIMS ANY WARRANTY THAT THE GOODS ARE MERCHANTABLE OR SUITABLE FOR ANY PARTICULAR PURPOSE REQUIRED BY THE BUYER.** It is important that you analyze all aspects of your application and review the information concerning the products or system in the current product literature. Due to the variety of operating conditions and applications for these goods or systems, the user, through its own analysis and testing, is solely responsible for selecting the goods and assuring that all performance, safety and warning requirements of the application are met.

Plastic Service Fittings

597 Series

Male Adapters - MPT to Plastic, with Integral Stiffener (Steel)

Part #	Outlet	Tube Size	Wall	SDR
M597C1S090	1/2" MPT	1/2" CTS	0.090"	7
M597C2S090	3/4" MPT	1/2" CTS	0.090"	7
M597C11S090	1/2" MPT	1/2" IPS	0.090"	9.3
M597C12S090	3/4" MPT	1/2" IPS	0.090"	9.3
M597C32S095	3/4" MPT	3/4" IPS	0.095"	11
M597C53S119	1" MPT	1" IPS	0.119"	11
M597C74S151	1-1/4" MPT	1 1/4" IPS	0.151"	11
M597C74S166	1-1/4" MPT	1 1/4" IPS	0.166"	10
M597C82S173	1-1/2" MPT	1 1/2" IPS	0.173"	11
M597C96S216	2" MPT	2" IPS	0.216"	11

⚠ Note: For underground use, fittings must be protected with an approved tape/wrap as defined by local/regional code.

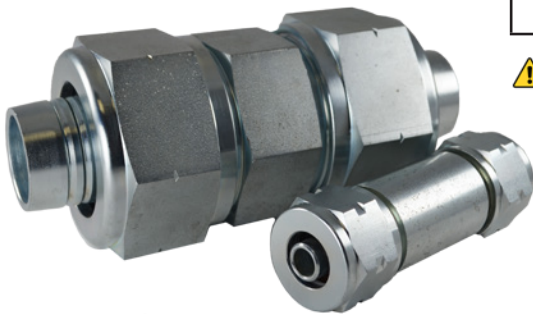


750PP Series

Couplings - Plastic to Plastic, with Integral Stiffeners (Steel)

Part #	Tube Size	Wall	SDR
M750C10	1/2" CTS	0.090"	7
M750C13	1/2" IPS	0.090"	9.3
M750C17	3/4" IPS	0.095"	11
M750C21	1" IPS	0.119"	11
M750C27	1 1/4" IPS	0.151"	11
M750C27-166	1 1/4" IPS	0.166"	10
M750C31	1 1/2" IPS	0.173"	11
M750C38	2" IPS	0.216"	11

⚠ Note: For underground use, fittings must be protected with an approved tape/wrap as defined by local/regional code.



COPO Fittings

697 Series

COPO Adapters - FPT to Plastic, with Integral Stiffener (Brass)

Part #	Outlet	Tube Size	Wall	SDR
M697C375S090BR	3/8" FPT	1/2" CTS	0.090"	7
M697C1S090BR	1/2" FPT	1/2" CTS	0.090"	7



545 Series

COPO Adapters - 45° Flare to Plastic, with Integral Stiffener (Brass)

Part #	Outlet	Tube Size	Wall	SDR
M545C1S090	3/8" 45° Male Flare	1/2" CTS	0.090"	7
M545C2S090	1/2" 45° Male Flare	1/2" CTS	0.090"	7

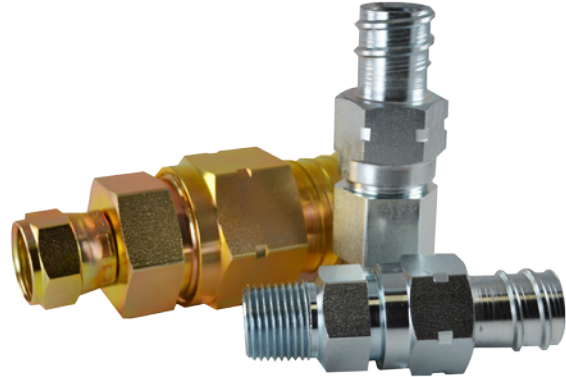


Conduit Adapters

X Series

Flexible Conduit Adapters with Integral Stiffener

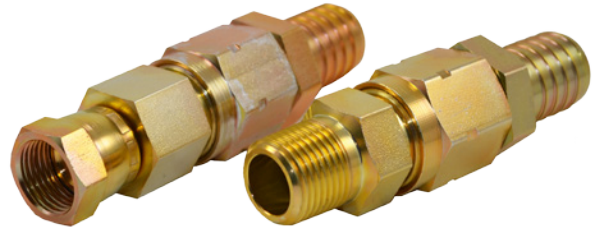
Part #	Outlet	Tube Size	Wall	SDR	Conduit MPT
X2536	1/2" MPT	1/2" CTS	.090"	7	3/4"
X2706	3/4" MPT	1/2" CTS	.090"	7	3/4"
X2500-17-12	3/4" MPT	3/4" IPS	.095"	11	1 1/4"
X2500-17-10SN	5/8" Female Swivel 45° Flare	3/4" IPS	.095"	11	1 1/4"



X Swivels

Flexible Conduit Adapters with Swivel and Integral Stiffener

Part #	Outlet	Tube Size	Wall	SDR	Conduit MPT
X2537SW	1/2" MPT	1/2" CTS	.090"	7	3/4"
X2707SW	3/4" MPT	1/2" CTS	.090"	7	3/4"
X2808SW	1/2" Female Swivel 45° Flare	1/2" CTS	.090"	7	3/4"



MSS Series

Moisture Seals for Field Assembled Risers

Part #	Tube Size	Conduit Size
MSS17-10-INV	1/2" CTS	3/4"
MSS27-17	3/4" IPS	1 1/4"



Certifications

SEALASTIC™ NATURAL GAS/PROPANE FITTINGS

SECTION 1 - Integral Stiffener Design

Chicago Fittings Corporation Certifies that all Sealastic™ Gas Fittings manufactured with integral stiffeners, when installed per Chicago Fittings installation instructions, will meet all applicable requirements defined under 49CFR Part 192, D.O.T. 192.281, 192.283(b), 192.375, ASTM D2513 Category 1, ASTM F1973, ASTM F1948-12 Category 1, NFPA 58, NFPA 54 (ANSI Z223.1) and IFGC Section 403. IAPMO/UPC/IPC Listed.

SECTION 2 - Loose Stiffener Design

Chicago Fittings Corporation Certifies that all Sealastic™ Gas Fittings manufactured with loose stiffeners, when installed per Chicago Fittings installation instructions, will meet all applicable requirements defined under 49CFR Part 192, D.O.T. 192.281, 192.283(b), 192.375, ASTM D2513 Category 1, ASTM F1973, ASTM F1948-12 Category 1, NFPA 58, NFPA 54 (ANSI Z223.1) and IFGC Section 403. IAPMO/UPC/IPC Listed. The loose stiffeners must be manufactured or approved by Chicago Fittings to adhere to these requirements. Should a stiffener not be manufactured or approved by Chicago Fittings, it will be the responsibility of the operating utility or end user to validate that they adhere to the above defined standards.

SECTION 3 – Material Definitions

3.1 Bodies	3.1.1	Tubing AISI C1013
	3.1.2	Bar AISI C12L14, C1213, C1215
	3.1.3	Bar CDA836 85-5-5-5 Bronze
	3.1.4	Bar CDA360 Free Machining Brass
3.2 Nuts	3.2.1	Tubing AISI C1013
	3.2.2	Bar AISI C12L14, C1213, C1215
	3.2.3	Bar CDA836 85-5-5-5 Bronze
	3.2.4	Bar CDA360 Free Machining Brass
3.3 Seals	3.3.1	Seals shall be manufactured from a Buna-N compound material that will resist deterioration from age or air under normal storage conditions. The seal will resist deterioration from impurities normally found in natural gas or LP gas including odorants, liquid hydrocarbons, carbon dioxide and water. The compound shall meet the following specifications: Color: Black/Red Durometer: 75 +/-5 Elongation: 150% Tensile Strength: 1,500 psi min.
3.4 Ferrules	3.4.1	Cold Rolled Strip C1050
3.5 Insulators	3.5.1	Zytel 105
3.6 Conduit	3.6.1	Core Material: Hot Dipped Galvanized Steel
	3.6.2	Jacket Wall: Liquid Tight, Sunlight Resistant
	3.6.3	Crush Resistance: 1,200psi min. in accordance with UL 360
3.7 Casing	3.6.1	Pipe/Tubing ASTM A53, ASTM A513
3.8 Moisture Seals	3.7.1	Hot Dipped Vinyl



Toll Free: 877.638.9009 Fax: 608.299.8901



3170 E Colley Road • Beloit, WI 53511 • www.chicagofittings.com