

Building connections that last™



# SCI® Stainless Weld Fittings





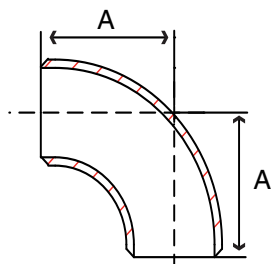
# Stainless Weld Fittings

## Specifications

- Stainless weld fittings conform to ASTM A403 Grade 304/304L & 316/316L, ASTM A960, MSS SP-43
- CMTR's available upon request
- Stainless weld fitting dimensions conform to ASME B16.9 (except Wall) and MSS SP-43
- Manufacturing facility is ISO 9001:2008
- Independent lab verification that fittings meet applicable chemical & mechanical properties

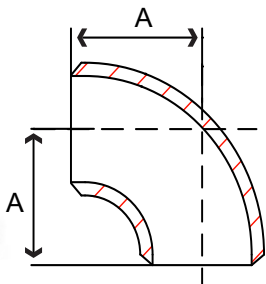


**SCI ProPak™ System**



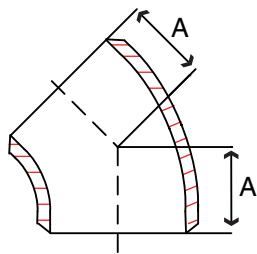
**Fig. S2014LE & S2016LE - 90° Elbow Long Radius**

| Size<br>in | Part Number |            | A<br>in | Weight<br>lb |
|------------|-------------|------------|---------|--------------|
|            | 304/304L    | 316/316L   |         |              |
| 1/2        | S2014LE004  | S2016LE004 | 1.50    | 0.13         |
| 3/4        | S2014LE006  | S2016LE006 | 1.50    | 0.16         |
| 1          | S2014LE010  | S2016LE010 | 1.50    | 0.38         |
| 1-1/4      | S2014LE012  | S2016LE012 | 1.88    | 0.50         |
| 1-1/2      | S2014LE014  | S2016LE014 | 2.25    | 0.75         |
| 2          | S2014LE020  | S2016LE020 | 3.00    | 1.10         |
| 2-1/2      | S2014LE024  | S2016LE024 | 3.75    | 1.88         |
| 3          | S2014LE030  | S2016LE030 | 4.50    | 2.50         |
| 4          | S2014LE040  | S2016LE040 | 6.00    | 4.30         |
| 5          | S2014LE050  | S2016LE050 | 7.50    | 7.40         |
| 6          | S2014LE060  | S2016LE060 | 9.00    | 11.00        |



**Fig. S2014E & S2016E - 90° Elbow Short Radius**

| Size<br>in | Part Number |            | A<br>in | Weight<br>lb |
|------------|-------------|------------|---------|--------------|
|            | 304/304L    | 316/316L   |         |              |
| 1          | S2014E 010  | S2016E 010 | 1.00    | 0.23         |
| 1-1/4      | S2014E 012  | S2016E 012 | 1.25    | 0.38         |
| 1-1/2      | S2014E 014  | S2016E 014 | 1.50    | 0.49         |
| 2          | S2014E 020  | S2016E 020 | 2.00    | 0.81         |
| 2-1/2      | S2014E 024  | S2016E 024 | 2.50    | 1.36         |
| 3          | S2014E 030  | S2016E 030 | 3.00    | 2.17         |
| 4          | S2014E 040  | S2016E 040 | 4.00    | 3.80         |
| 5          | S2014E 050  | S2016E 050 | 5.00    | 5.19         |
| 6          | S2014E 060  | S2016E 060 | 6.00    | 7.45         |

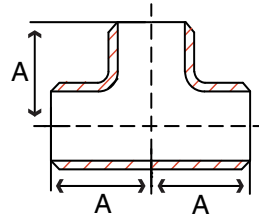


**Fig. S2014F & S2016F - 45° Elbow**

| Size<br>in | Part Number |            | A<br>in | Weight<br>lb |
|------------|-------------|------------|---------|--------------|
|            | 304/304L    | 316/316L   |         |              |
| 1/2        | S2014F 004  | S2016F 004 | 0.62    | 0.07         |
| 3/4        | S2014F 006  | S2016F 006 | 0.75    | 0.07         |
| 1          | S2014F 010  | S2016F 010 | 0.86    | 0.1          |
| 1-1/4      | S2014F 012  | S2016F 012 | 1.00    | 0.2          |
| 1-1/2      | S2014F 014  | S2016F 014 | 1.12    | 0.3          |
| 2          | S2014F 020  | S2016F 020 | 1.36    | 0.5          |
| 2-1/2      | S2014F 024  | S2016F 024 | 1.75    | 0.9          |
| 3          | S2014F 030  | S2016F 030 | 2.00    | 1.3          |
| 4          | S2014F 040  | S2016F 040 | 2.50    | 2.3          |
| 5          | S2014F 050  | S2016F 050 | 3.12    | 4.0          |
| 6          | S2014F 060  | S2016F 060 | 3.75    | 5.7          |

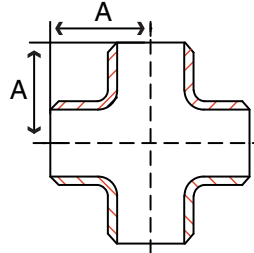
**Fig. S2014T & S2016T - Tee**

| Size<br>in | Part Number |            | A<br>in | Weight<br>lb |
|------------|-------------|------------|---------|--------------|
|            | 304/304L    | 316/316L   |         |              |
| 1/2        | S2014T 004  | S2016T 004 | 1.00    | 0.2          |
| 3/4        | S2014T 006  | S2016T 006 | 1.13    | 0.3          |
| 1          | S2014T 010  | S2016T 010 | 1.50    | 0.5          |
| 1-1/4      | S2014T 012  | S2016T 012 | 1.88    | 1.1          |
| 1-1/2      | S2014T 014  | S2016T 014 | 2.25    | 1.6          |
| 2          | S2014T 020  | S2016T 020 | 2.50    | 1.7          |
| 2-1/2      | S2014T 024  | S2016T 024 | 3.00    | 2.8          |
| 3          | S2014T 030  | S2016T 030 | 3.38    | 3.8          |
| 4          | S2014T 040  | S2016T 040 | 4.12    | 5.8          |
| 5          | S2014T 050  | S2016T 050 | 4.88    | 10.3         |
| 6          | S2014T 060  | S2016T 060 | 5.62    | 14.6         |



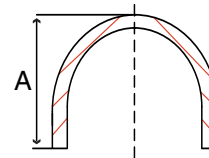
**Fig. S2014X & S2016X - Cross**

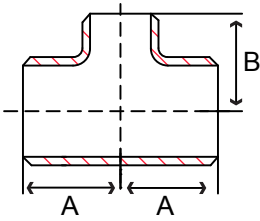
| Size<br>in | Part Number |            | A<br>in | Weight<br>lb |
|------------|-------------|------------|---------|--------------|
|            | 304/304L    | 316/316L   |         |              |
| 1-1/2      | S2014X 014  | S2016X 014 | 2.25    | 1.7          |
| 2          | S2014X 020  | S2016X 020 | 2.50    | 2.1          |
| 3          | S2014X 030  | S2016X 030 | 3.38    | 4.4          |
| 4          | S2014X 040  | S2016X 040 | 4.12    | 8.7          |
| 6          | S2014X 060  | S2016X 060 | 5.62    | 20.4         |



**Fig. S2014C & S2016C - Cap**

| Size<br>in | Part Number |            | A<br>in | Weight<br>lb |
|------------|-------------|------------|---------|--------------|
|            | 304/304L    | 316/316L   |         |              |
| 1/2        | S2014C 004  | S2016C 004 | 1.00    | 0.07         |
| 3/4        | S2014C 006  | S2016C 006 | 1.00    | 0.1          |
| 1          | S2014C 010  | S2016C 010 | 1.50    | 0.1          |
| 1-1/4      | S2014C 012  | S2016C 012 | 1.50    | 0.2          |
| 1-1/2      | S2014C 014  | S2016C 014 | 1.50    | 0.2          |
| 2          | S2014C 020  | S2016C 020 | 1.50    | 0.4          |
| 2-1/2      | S2014C 024  | S2016C 024 | 1.50    | 0.5          |
| 3          | S2014C 030  | S2016C 030 | 2.00    | 0.8          |
| 4          | S2014C 040  | S2016C 040 | 2.50    | 1.2          |
| 5          | S2014C 050  | S2016C 050 | 3.00    | 2.4          |
| 6          | S2014C 060  | S2016C 060 | 3.50    | 3.1          |





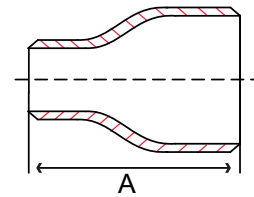
**Fig. S2014RT & S2016RT - Reducing Tee**

| Size<br>in    | Part Number   |               | A<br>in | B<br>in | Weight<br>lb |
|---------------|---------------|---------------|---------|---------|--------------|
|               | 304/304L      | 316/316L      |         |         |              |
| 3/4 x 1/2     | S2014RT006004 | S2016RT006004 | 1.13    | 1.13    | 0.2          |
| 1 x 1/2       | S2014RT010004 | S2016RT010004 | 1.50    | 1.50    | 0.5          |
| 1 x 3/4       | S2014RT010006 | S2016RT010006 | 1.50    | 1.50    | 0.5          |
| 1-1/4 x 3/4   | S2014RT012006 | S2016RT012006 | 1.88    | 1.88    | 0.9          |
| 1-1/4 x 1     | S2014RT012010 | S2016RT012010 | 1.88    | 1.88    | 0.9          |
| 1-1/2 x 1/2   | S2014RT014004 | S2016RT014004 | 2.25    | 2.25    | 1.2          |
| 1-1/2 x 3/4   | S2014RT014006 | S2016RT014006 | 2.25    | 2.25    | 1.2          |
| 1-1/2 x 1     | S2014RT014010 | S2016RT014010 | 2.25    | 2.25    | 1.3          |
| 1-1/2 x 1-1/4 | S2014RT014012 | S2016RT014012 | 2.25    | 2.25    | 1.3          |
| 2 x 1/2       | S2014RT020004 | S2014RT020004 | 2.50    | 1.75    | 1.5          |
| 2 x 3/4       | S2014RT020006 | S2016RT020006 | 2.50    | 1.75    | 1.5          |
| 2 x 1         | S2014RT020010 | S2016RT020010 | 2.50    | 2.00    | 1.6          |
| 2 x 1-1/4     | S2014RT020012 | S2016RT020012 | 2.50    | 2.25    | 1.6          |
| 2 x 1-1/2     | S2014RT020014 | S2016RT020014 | 2.50    | 2.38    | 1.6          |
| 2-1/2 x 1     | S2014RT024010 | S2016RT024010 | 3.00    | 2.25    | 2.6          |
| 2-1/2 x 1-1/2 | S2014RT024014 | S2016RT024014 | 3.00    | 2.63    | 2.7          |
| 2-1/2 x 2     | S2014RT024020 | S2016RT024020 | 3.00    | 2.75    | 2.7          |
| 3 x 1         | S2014RT030010 | S2016RT030010 | 3.38    | 2.63    | 3.2          |
| 3 x 1-1/4     | S2014RT030012 | S2016RT030012 | 3.38    | 2.75    | 3.3          |
| 3 x 1-1/2     | S2014RT030014 | S2016RT030014 | 3.38    | 2.88    | 3.3          |
| 3 x 2         | S2014RT030020 | S2016RT030020 | 3.38    | 3.00    | 3.4          |
| 3 x 2-1/2     | S2014RT030024 | S2016RT030024 | 3.38    | 3.25    | 3.5          |
| 4 x 1-1/2     | S2014RT040014 | S2016RT040014 | 4.13    | 3.38    | 6.4          |
| 4 x 2         | S2014RT040020 | S2016RT040020 | 4.13    | 3.50    | 6.4          |
| 4 x 2-1/2     | S2014RT040024 | S2016RT040024 | 4.13    | 3.75    | 6.5          |
| 4 x 3         | S2014RT040030 | S2016RT040030 | 4.13    | 3.88    | 6.7          |
| 5 x 3         | S2014RT050030 | S2016RT050030 | 4.88    | 4.38    | 11.5         |
| 5 x 4         | S2014RT050040 | S2016RT050040 | 4.88    | 4.63    | 12.1         |
| 6 x 2         | S2014RT060020 | S2016RT060020 | 5.63    | 4.75    | 14.9         |
| 6 x 2-1/2     | S2014RT060024 | S2016RT060024 | 5.63    | 4.75    | 14.9         |
| 6 x 3         | S2014RT060030 | S2016RT060030 | 5.63    | 4.88    | 15.1         |
| 6 x 4         | S2014RT060040 | S2016RT060040 | 5.63    | 5.13    | 15.6         |

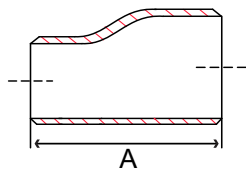


**Fig. S2014CR & S2016CR - Concentric Reducer**

| Size<br>in    | Part Number   |               | A<br>in | Weight<br>lb |
|---------------|---------------|---------------|---------|--------------|
|               | 304/304L      | 316/316L      |         |              |
| 3/4 x 1/2     | S2014CR006004 | S2016CR006004 | 1.5     | 0.2          |
| 1 x 1/2       | S2014CR010004 | S2016CR010004 | 2.0     | 0.2          |
| 1 x 3/4       | S2014CR010006 | S2016CR010006 | 2.0     | 0.2          |
| 1-1/4 x 1/2   | S2014CR012004 | S2016CR012004 | 2.0     | 0.3          |
| 1-1/4 x 3/4   | S2014CR012006 | S2016CR012006 | 2.0     | 0.3          |
| 1-1/4 x 1     | S2014CR012010 | S2016CR012010 | 2.0     | 0.3          |
| 1-1/2 x 1/2   | S2014CR014004 | S2016CR014004 | 2.5     | 0.3          |
| 1-1/2 x 3/4   | S2014CR014006 | S2016CR014006 | 2.5     | 0.3          |
| 1-1/2 x 1     | S2014CR014010 | S2016CR014010 | 2.5     | 0.4          |
| 1-1/2 x 1-1/4 | S2014CR014012 | S2016CR014012 | 2.5     | 0.4          |
| 2 x 1/2       | S2014CR020004 | S2016CR020004 | 3.0     | 0.5          |
| 2 x 3/4       | S2014CR020006 | S2016CR020006 | 3.0     | 0.5          |
| 2 x 1         | S2014CR020010 | S2016CR020010 | 3.0     | 0.6          |
| 2 x 1-1/4     | S2014CR020012 | S2016CR020012 | 3.0     | 0.6          |
| 2 x 1-1/2     | S2014CR020014 | S2016CR020014 | 3.0     | 0.6          |
| 2-1/2 x 1     | S2014CR024010 | S2016CR024010 | 3.5     | 0.8          |
| 2-1/2 x 1-1/4 | S2014CR024012 | S2016CR024012 | 3.5     | 0.9          |
| 2-1/2 x 1-1/2 | S2014CR024014 | S2016CR024014 | 3.5     | 0.9          |
| 2-1/2 x 2     | S2014CR024020 | S2016CR024020 | 3.5     | 1.0          |
| 3 x 1         | S2014CR030010 | S2016CR030010 | 3.5     | 1.0          |
| 3 x 1-1/4     | S2014CR030012 | S2016CR030012 | 3.5     | 1.0          |
| 3 x 1-1/2     | S2014CR030014 | S2016CR030014 | 3.5     | 1.1          |
| 3 x 2         | S2014CR030020 | S2016CR030020 | 3.5     | 1.2          |
| 3 x 2-1/2     | S2014CR030024 | S2016CR030024 | 3.5     | 1.3          |
| 4 x 1-1/2     | S2014CR040014 | S2016CR040014 | 4.0     | 1.7          |
| 4 x 2         | S2014CR040020 | S2016CR040020 | 4.0     | 1.5          |
| 4 x 2-1/2     | S2014CR040024 | S2016CR040024 | 4.0     | 1.7          |
| 4 x 3         | S2014CR040030 | S2016CR040030 | 4.0     | 1.8          |
| 5 x 3         | S2014CR050030 | S2016CR050030 | 5.0     | 3.0          |
| 5 x 4         | S2014CR050040 | S2016CR050040 | 5.0     | 3.2          |
| 6 x 2         | S2014CR060020 | S2016CR060020 | 5.5     | 3.2          |
| 6 x 2-1/2     | S2014CR060024 | S2016CR060024 | 5.5     | 3.2          |
| 6 x 3         | S2014CR060030 | S2016CR060030 | 5.5     | 3.3          |
| 6 x 4         | S2014CR060040 | S2016CR060040 | 5.5     | 4.2          |
| 6 x 5         | S2014CR060050 | S2016CR060050 | 5.5     | 4.3          |



**Pro Pak System**



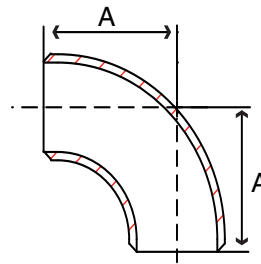
**Fig. S2014ER & S2016ER - Eccentric Reducer**

| Size<br>in    | Part Number   |               | A<br>in | Weight<br>lb |
|---------------|---------------|---------------|---------|--------------|
|               | 304/304L      | 316/316L      |         |              |
| 3/4 x 1/2     | S2014ER006004 | S2016ER006004 | 1.5     | 0.2          |
| 1 x 1/2       | S2014ER010004 | S2016ER010004 | 2.0     | 0.2          |
| 1 x 3/4       | S2014ER010006 | S2016ER010006 | 2.0     | 0.2          |
| 1-1/4 x 3/4   | S2014ER012006 | S2016ER012006 | 2.0     | 0.3          |
| 1-1/4 x 1     | S2014ER012010 | S2016ER012010 | 2.0     | 0.3          |
| 1-1/2 x 1/2   | S2014ER014004 | S2016ER014004 | 2.5     | 0.3          |
| 1-1/2 x 3/4   | S2014ER014006 | S2016ER014006 | 2.5     | 0.3          |
| 1-1/2 x 1     | S2014ER014010 | S2016ER014010 | 2.5     | 0.4          |
| 1-1/2 x 1-1/4 | S2014ER014012 | S2016ER014012 | 2.5     | 0.4          |
| 2 x 1/2       | S2014ER020004 | S2016ER020004 | 3.0     | 0.5          |
| 2 x 3/4       | S2014ER020006 | S2016ER020006 | 3.0     | 0.5          |
| 2 x 1         | S2014ER020010 | S2016ER020010 | 3.0     | 0.6          |
| 2 x 1-1/4     | S2014ER020012 | S2016ER020012 | 3.0     | 0.6          |
| 2 x 1-1/2     | S2014ER020014 | S2016ER020014 | 3.0     | 0.6          |
| 2-1/2 x 1     | S2014ER024010 | S2016ER024010 | 3.5     | 0.8          |
| 2-1/2 x 1-1/2 | S2014ER024014 | S2016ER024014 | 3.5     | 0.9          |
| 2-1/2 x 2     | S2014ER024020 | S2016ER024020 | 3.5     | 1.0          |
| 3 x 1         | S2014ER030010 | S2016ER030010 | 3.5     | 1.0          |
| 3 x 1-1/4     | S2014ER030012 | S2016ER030012 | 3.5     | 1.0          |
| 3 x 1-1/2     | S2014ER030014 | S2016ER030014 | 3.5     | 1.1          |
| 3 x 2         | S2014ER030020 | S2016ER030020 | 3.5     | 1.2          |
| 3 x 2-1/2     | S2014ER030024 | S2016ER030024 | 3.5     | 1.3          |
| 4 x 1-1/2     | S2014ER040014 | S2016ER040014 | 4.0     | 1.7          |
| 4 x 2         | S2014ER040020 | S2016ER040020 | 4.0     | 1.5          |
| 4 x 2-1/2     | S2014ER040024 | S2016ER040024 | 4.0     | 1.7          |
| 4 x 3         | S2014ER040030 | S2016ER040030 | 4.0     | 1.8          |
| 5 x 3         | S2014ER050030 | S2016ER050030 | 5.0     | 3.0          |
| 5 x 4         | S2014ER050040 | S2016ER050040 | 5.0     | 3.2          |
| 6 x 2         | S2014ER060020 | S2016ER060020 | 5.5     | 3.2          |
| 6 x 2-1/2     | S2014ER060024 | S2016ER060024 | 5.5     | 3.2          |
| 6 x 3         | S2014ER060030 | S2016ER060030 | 5.5     | 3.3          |
| 6 x 4         | S2014ER060040 | S2016ER060040 | 5.5     | 4.2          |
| 6 x 5         | S2014ER060050 | S2016ER060050 | 5.5     | 4.3          |

**Order On-Line  
at [www.smithcooper.com](http://www.smithcooper.com)**

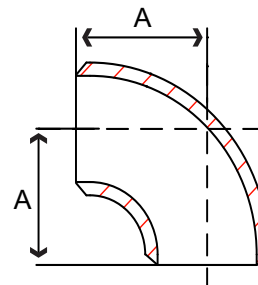
**Fig. S2044LE & S2046LE - 90° Elbow Long Radius**

| Size<br>in | Part Number |            | A<br>in | Weight<br>lb |
|------------|-------------|------------|---------|--------------|
|            | 304/304L    | 316/316L   |         |              |
| 1/2        | S2044LE004  | S2046LE004 | 1.50    | 0.18         |
| 3/4        | S2044LE006  | S2046LE006 | 1.50    | 0.19         |
| 1          | S2044LE010  | S2046LE010 | 1.50    | 0.40         |
| 1-1/4      | S2044LE012  | S2046LE012 | 1.88    | 0.60         |
| 1-1/2      | S2044LE014  | S2046LE014 | 2.25    | 0.90         |
| 2          | S2044LE020  | S2046LE020 | 3.00    | 1.60         |
| 2-1/2      | S2044LE024  | S2046LE024 | 3.75    | 3.25         |
| 3          | S2044LE030  | S2046LE030 | 4.50    | 5.00         |
| 4          | S2044LE040  | S2046LE040 | 6.00    | 9.00         |
| 5          | S2044LE050  | S2046LE050 | 7.50    | 15.50        |
| 6          | S2044LE060  | S2046LE060 | 9.00    | 24.50        |



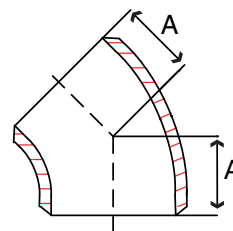
**Fig. S2044E & S2046E - 90° Elbow Short Radius**

| Size<br>in | Part Number |            | A<br>in | Weight<br>lb |
|------------|-------------|------------|---------|--------------|
|            | 304/304L    | 316/316L   |         |              |
| 1          | S2044E 010  | S2046E 010 | 1.00    | 0.26         |
| 1-1/4      | S2044E 012  | S2046E 012 | 1.25    | 0.45         |
| 1-1/2      | S2044E 014  | S2046E 014 | 1.50    | 0.63         |
| 2          | S2044E 020  | S2046E 020 | 2.00    | 1.13         |
| 2-1/2      | S2044E 024  | S2046E 024 | 2.50    | 2.25         |
| 3          | S2044E 030  | S2046E 030 | 3.00    | 3.31         |
| 4          | S2044E 040  | S2046E 040 | 4.00    | 6.88         |
| 5          | S2044E 050  | S2046E 050 | 5.00    | 11.63        |
| 6          | S2044E 060  | S2046E 060 | 6.00    | 17.50        |

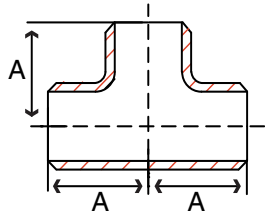


**Fig. S2044F & S2046F - 45° Elbow**

| Size<br>in | Part Number |            | A<br>in | Weight<br>lb |
|------------|-------------|------------|---------|--------------|
|            | 304/304L    | 316/316L   |         |              |
| 1/2        | S2044F 004  | S2046F 004 | 0.62    | 0.09         |
| 3/4        | S2044F 006  | S2046F 006 | 0.75    | 0.09         |
| 1          | S2044F 010  | S2046F 010 | 0.86    | 0.1          |
| 1-1/4      | S2044F 012  | S2046F 012 | 1.00    | 0.2          |
| 1-1/2      | S2044F 014  | S2046F 014 | 1.12    | 0.4          |
| 2          | S2044F 020  | S2046F 020 | 1.36    | 0.7          |
| 2-1/2      | S2044F 024  | S2046F 024 | 1.75    | 1.4          |
| 3          | S2044F 030  | S2046F 030 | 2.00    | 2.3          |
| 4          | S2044F 040  | S2046F 040 | 2.50    | 4.4          |
| 5          | S2044F 050  | S2046F 050 | 3.12    | 7.5          |
| 6          | S2044F 060  | S2046F 060 | 3.75    | 11.8         |

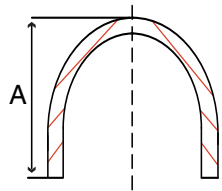






**Fig. S2044T & S2046T - Tee**

| Size<br>in | Part Number |            | A<br>in | Weight<br>lb |
|------------|-------------|------------|---------|--------------|
|            | 304/304L    | 316/316L   |         |              |
| 1/2        | S2044T 004  | S2046T 004 | 1.00    | 0.3          |
| 3/4        | S2044T 006  | S2046T 006 | 1.13    | 0.4          |
| 1          | S2044T 010  | S2046T 010 | 1.50    | 0.6          |
| 1-1/4      | S2044T 012  | S2046T 012 | 1.88    | 1.1          |
| 1-1/2      | S2044T 014  | S2046T 014 | 2.25    | 1.6          |
| 2          | S2044T 020  | S2046T 020 | 2.50    | 4.1          |
| 2-1/2      | S2044T 024  | S2046T 024 | 3.00    | 6.3          |
| 3          | S2044T 030  | S2046T 030 | 3.38    | 8.4          |
| 4          | S2044T 040  | S2046T 040 | 4.12    | 13.2         |
| 5          | S2044T 050  | S2046T 050 | 4.88    | 21.9         |
| 6          | S2044T 060  | S2046T 060 | 5.62    | 34.6         |



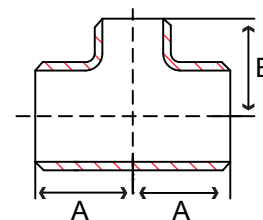
**Fig. S2044C & S2046C - Cap**

| Size<br>in | Part Number |            | A<br>in | Weight<br>lb |
|------------|-------------|------------|---------|--------------|
|            | 304/304L    | 316/316L   |         |              |
| 1/2        | S2044C 004  | S2046C 004 | 1.00    | 0.07         |
| 3/4        | S2044C 006  | S2046C 006 | 1.00    | 0.1          |
| 1          | S2044C 010  | S2046C 010 | 1.50    | 0.2          |
| 1-1/4      | S2044C 012  | S2046C 012 | 1.50    | 0.3          |
| 1-1/2      | S2044C 014  | S2046C 014 | 1.50    | 0.3          |
| 2          | S2044C 020  | S2046C 020 | 1.50    | 0.5          |
| 2-1/2      | S2044C 024  | S2046C 024 | 1.50    | 0.8          |
| 3          | S2044C 030  | S2046C 030 | 2.00    | 1.4          |
| 4          | S2044C 040  | S2046C 040 | 2.50    | 2.5          |
| 5          | S2044C 050  | S2046C 050 | 3.00    | 4.1          |
| 6          | S2044C 060  | S2046C 060 | 3.50    | 6.4          |

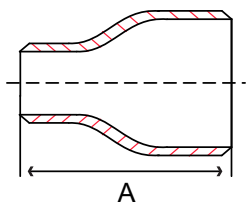


**Fig. S2044RT & S2046RT - Reducing Tee**

| Size<br>in    | Part Number   |               | A<br>in | B<br>in | Weight<br>lb |
|---------------|---------------|---------------|---------|---------|--------------|
|               | 304/304L      | 316/316L      |         |         |              |
| 3/4 x 1/2     | S2044RT006004 | S2046RT006004 | 1.13    | 1.13    | 0.3          |
| 1 x 1/2       | S2044RT010004 | S2046RT010004 | 1.50    | 1.50    | 0.5          |
| 1 x 3/4       | S2044RT010006 | S2046RT010006 | 1.50    | 1.50    | 0.5          |
| 1-1/4 x 3/4   | S2044RT012006 | S2046RT012006 | 1.88    | 1.88    | 1.1          |
| 1-1/4 x 1     | S2044RT012010 | S2046RT012010 | 1.88    | 1.88    | 1.1          |
| 1-1/2 x 1/2   | S2044RT014004 | S2046RT014004 | 2.25    | 2.25    | 1.6          |
| 1-1/2 x 3/4   | S2044RT014006 | S2046RT014006 | 2.25    | 2.25    | 1.6          |
| 1-1/2 x 1     | S2044RT014010 | S2046RT014010 | 2.25    | 2.25    | 1.6          |
| 1-1/2 x 1-1/4 | S2044RT014012 | S2046RT014012 | 2.25    | 2.25    | 1.7          |
| 2 x 1/2       | S2044RT020004 | S2046RT020004 | 2.50    | 1.75    | 2.4          |
| 2 x 3/4       | S2044RT020006 | S2046RT020006 | 2.50    | 1.75    | 2.4          |
| 2 x 1         | S2044RT020010 | S2046RT020010 | 2.50    | 2.00    | 2.4          |
| 2 x 1-1/4     | S2044RT020012 | S2046RT020012 | 2.50    | 2.25    | 2.4          |
| 2 x 1-1/2     | S2044RT020014 | S2046RT020014 | 2.50    | 2.38    | 2.5          |
| 2-1/2 x 1     | S2044RT024010 | S2046RT024010 | 3.0     | 2.25    | 4.1          |
| 2-1/2 x 1-1/2 | S2044RT024014 | S2046RT024014 | 3.0     | 2.63    | 4.2          |
| 2-1/2 x 2     | S2044RT024020 | S2046RT024020 | 3.0     | 2.75    | 4.3          |
| 3 x 1         | S2044RT030010 | S2046RT030010 | 3.38    | 2.63    | 6.1          |
| 3 x 1-1/4     | S2044RT030012 | S2046RT030012 | 3.38    | 2.75    | 6.2          |
| 3 x 1-1/2     | S2044RT030014 | S2046RT030014 | 3.38    | 2.88    | 6.2          |
| 3 x 2         | S2044RT030020 | S2046RT030020 | 3.38    | 3.00    | 6.4          |
| 3 x 2-1/2     | S2044RT030024 | S2046RT030024 | 3.38    | 3.25    | 6.5          |
| 4 x 1-1/2     | S2044RT040014 | S2046RT040014 | 4.13    | 3.38    | 9.7          |
| 4 x 2         | S2044RT040020 | S2046RT040020 | 4.13    | 3.25    | 9.8          |
| 4 x 2-1/2     | S2044RT040024 | S2046RT040024 | 4.13    | 3.75    | 10.0         |
| 4 x 3         | S2044RT040030 | S2046RT040030 | 4.13    | 3.88    | 10.2         |
| 5 x 3         | S2044RT050030 | S2046RT050030 | 4.88    | 4.38    | 17.8         |
| 5 x 4         | S2044RT050040 | S2046RT050040 | 4.88    | 4.63    | 18.6         |
| 6 x 2         | S2044RT060020 | S2046RT060020 | 5.63    | 4.75    | 20.3         |
| 6 x 2-1/2     | S2044RT060024 | S2046RT060024 | 5.63    | 4.75    | 20.3         |
| 6 x 3         | S2044RT060030 | S2046RT060030 | 5.63    | 4.88    | 26.3         |
| 6 x 4         | S2044RT060040 | S2046RT060040 | 5.63    | 5.13    | 21.3         |
| 6 x 5         | S2044RT060050 | S2046RT060050 | 5.63    | 5.38    | 21.8         |



**Be sure to check out the Pipe Section starting on page 233**



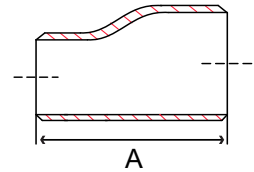
**Fig. S2044CR & S2046CR - Concentric Reducer**

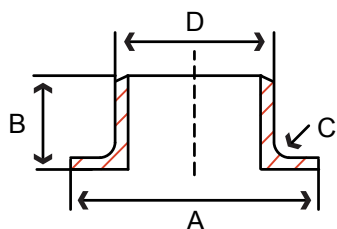
| Size<br>in    | Part Number   |               | A<br>in | Weight<br>lb |
|---------------|---------------|---------------|---------|--------------|
|               | 304/304L      | 316/316L      |         |              |
| 3/4 x 1/2     | S2044CR006004 | S2046CR006004 | 1.5     | 0.3          |
| 1 x 1/2       | S2044CR010004 | S2046CR010004 | 2.0     | 0.3          |
| 1 x 3/4       | S2044CR010006 | S2046CR010006 | 2.0     | 0.3          |
| 1-1/4 x 3/4   | S2044CR012006 | S2046CR012006 | 2.0     | 0.4          |
| 1-1/4 x 1     | S2044CR012010 | S2046CR012010 | 2.0     | 0.4          |
| 1-1/2 x 1/2   | S2044CR014004 | S2046CR014004 | 2.5     | 0.5          |
| 1-1/2 x 3/4   | S2044CR014006 | S2046CR014006 | 2.5     | 0.5          |
| 1-1/2 x 1     | S2044CR014010 | S2046CR014010 | 2.5     | 0.5          |
| 1-1/2 x 1-1/4 | S2044CR014012 | S2046CR014012 | 2.5     | 0.6          |
| 2 x 1/2       | S2044CR020004 | S2046CR020004 | 3.0     | 0.8          |
| 2 x 3/4       | S2044CR020006 | S2046CR020006 | 3.0     | 0.8          |
| 2 x 1         | S2044CR020010 | S2046CR020010 | 3.0     | 0.8          |
| 2 x 1-1/4     | S2044CR020012 | S2046CR020012 | 3.0     | 0.9          |
| 2 x 1-1/2     | S2044CR020014 | S2046CR020014 | 3.0     | 0.9          |
| 2-1/2 x 1     | S2044CR024010 | S2046CR024010 | 3.5     | 1.4          |
| 2-1/2 x 1-1/4 | S2044CR024012 | S2046CR024012 | 3.5     | 1.6          |
| 2-1/2 x 1-1/2 | S2044CR024014 | S2046CR024014 | 3.5     | 1.6          |
| 2-1/2 x 2     | S2044CR024020 | S2046CR024020 | 3.5     | 1.7          |
| 3 x 1         | S2044CR030010 | S2046CR030010 | 3.5     | 1.8          |
| 3 x 1-1/4     | S2044CR030012 | S2046CR030012 | 3.5     | 1.8          |
| 3 x 1-1/2     | S2044CR030014 | S2046CR030014 | 3.5     | 2.0          |
| 3 x 2         | S2044CR030020 | S2046CR030020 | 3.5     | 2.2          |
| 3 x 2-1/2     | S2044CR030024 | S2046CR030024 | 3.5     | 2.3          |
| 4 x 1-1/2     | S2044CR040014 | S2046CR040014 | 4.0     | 3.3          |
| 4 x 2         | S2044CR040020 | S2046CR040020 | 4.0     | 3.0          |
| 4 x 2-1/2     | S2044CR040024 | S2046CR040024 | 4.0     | 3.4          |
| 4 x 3         | S2044CR040030 | S2046CR040030 | 4.0     | 3.6          |
| 5 x 3         | S2044CR050030 | S2046CR050030 | 5.0     | 6.0          |
| 5 x 4         | S2044CR050040 | S2046CR050040 | 5.0     | 6.4          |
| 6 x 2         | S2044CR060020 | S2046CR060020 | 5.5     | 6.5          |
| 6 x 2-1/2     | S2044CR060024 | S2046CR060024 | 5.5     | 6.5          |
| 6 x 3         | S2044CR060030 | S2046CR060030 | 5.5     | 8.3          |
| 6 x 4         | S2044CR060040 | S2046CR060040 | 5.5     | 8.9          |
| 6 x 5         | S2044CR060050 | S2046CR060050 | 5.5     | 8.9          |

**Order On-Line  
at [www.smithcooper.com](http://www.smithcooper.com)**

**Fig. S2044ER & S2046ER - Eccentric Reducer**

| Size<br>in    | Part Number   |               | A<br>in | Weight<br>lb |
|---------------|---------------|---------------|---------|--------------|
|               | 304/304L      | 316/316L      |         |              |
| 3/4 x 1/2     | S2044ER006004 | S2046ER006004 | 1.5     | 0.3          |
| 1 x 1/2       | S2044ER010004 | S2046ER010004 | 2.0     | 0.3          |
| 1 x 3/4       | S2044ER010006 | S2046ER010006 | 2.0     | 0.3          |
| 1-1/4 x 3/4   | S2044ER012006 | S2046ER012006 | 2.0     | 0.4          |
| 1-1/4 x 1     | S2044ER012010 | S2046ER012010 | 2.0     | 0.4          |
| 1-1/2 x 1/2   | S2044ER014004 | S2046ER014004 | 2.5     | 0.5          |
| 1-1/2 x 3/4   | S2044ER014006 | S2046ER014006 | 2.5     | 0.5          |
| 1-1/2 x 1     | S2044ER014010 | S2046ER014010 | 2.5     | 0.5          |
| 1-1/2 x 1-1/4 | S2044ER014012 | S2046ER014012 | 2.5     | 0.6          |
| 2 x 1/2       | S2044ER020004 | S2046ER020004 | 3.0     | 0.8          |
| 2 x 3/4       | S2044ER020006 | S2046ER020006 | 3.0     | 0.8          |
| 2 x 1         | S2044ER020010 | S2046ER020010 | 3.0     | 0.8          |
| 2 x 1-1/4     | S2044ER020012 | S2046ER020012 | 3.0     | 0.9          |
| 2 x 1-1/2     | S2044ER020014 | S2046ER020014 | 3.0     | 0.9          |
| 2-1/2 x 1     | S2044ER024010 | S2046ER024010 | 3.5     | 1.4          |
| 2-1/2 x 1-1/2 | S2044ER024014 | S2046ER024014 | 3.5     | 1.6          |
| 2-1/2 x 2     | S2044ER024020 | S2046ER024020 | 3.5     | 1.7          |
| 3 x 1         | S2044ER030010 | S2046ER030010 | 3.5     | 1.8          |
| 3 x 1-1/4     | S2044ER030012 | S2046ER030012 | 3.5     | 1.8          |
| 3 x 1-1/2     | S2044ER030014 | S2046ER030014 | 3.5     | 2.0          |
| 3 x 2         | S2044ER030020 | S2046ER030020 | 3.5     | 2.2          |
| 3 x 2-1/2     | S2044ER030024 | S2046ER030024 | 3.5     | 2.3          |
| 4 x 1-1/2     | S2044ER040014 | S2046ER040014 | 4.0     | 3.3          |
| 4 x 2         | S2044ER040020 | S2046ER040020 | 4.0     | 3.0          |
| 4 x 2-1/2     | S2044ER040024 | S2046ER040024 | 4.0     | 3.4          |
| 4 x 3         | S2044ER040030 | S2046ER040030 | 4.0     | 3.6          |
| 5 x 3         | S2044ER050030 | S2046ER050030 | 5.0     | 6.0          |
| 5 x 4         | S2044ER050040 | S2046ER050040 | 5.0     | 6.4          |
| 6 x 2         | S2044ER060020 | S2046ER060020 | 5.5     | 6.5          |
| 6 x 2-1/2     | S2044ER060024 | S2046ER060024 | 5.5     | 6.5          |
| 6 x 3         | S2044ER060030 | S2046ER060030 | 5.5     | 8.3          |
| 6 x 4         | S2044ER060040 | S2046ER060040 | 5.5     | 8.9          |
| 6 x 5         | S2044ER060050 | S2046ER060050 | 5.5     | 8.9          |

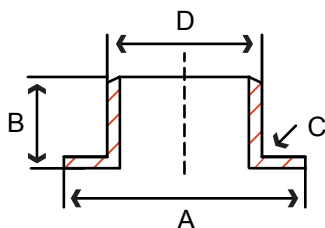




**Fig. S2214MA & S2216MA - Sch 10 MSS Type A Stub End**

| Size<br>in | Part Number |            | A<br>in | B<br>in | C (radius)<br>in | D<br>in | Weight<br>lb |
|------------|-------------|------------|---------|---------|------------------|---------|--------------|
|            | 304/304L    | 316/316L   |         |         |                  |         |              |
| 1/2        | S2214MA004  | S2216MA004 | 1.38    | 2.00    | 0.125            | 0.840   | 0.1          |
| 3/4        | S2214MA006  | S2216MA006 | 1.69    | 2.00    | 0.125            | 1.050   | 0.1          |
| 1          | S2214MA010  | S2216MA010 | 2.00    | 2.00    | 0.125            | 1.315   | 0.3          |
| 1-1/4      | S2214MA012  | S2216MA012 | 2.50    | 2.00    | 0.187            | 1.660   | 0.4          |
| 1-1/2      | S2214MA014  | S2216MA014 | 2.88    | 2.00    | 0.250            | 1.900   | 0.5          |
| 2          | S2214MA020  | S2216MA020 | 3.62    | 2.50    | 0.313            | 2.375   | 0.8          |
| 2-1/2      | S2214MA024  | S2216MA024 | 4.12    | 2.50    | 0.313            | 2.875   | 1.0          |
| 3          | S2214MA030  | S2216MA030 | 5.00    | 2.50    | 0.375            | 3.500   | 1.4          |
| 4          | S2214MA040  | S2216MA040 | 6.19    | 3.00    | 0.436            | 4.500   | 2.1          |
| 5          | S2214MA050  | S2216MA050 | 7.31    | 3.00    | 0.436            | 5.563   | 2.7          |
| 6          | S2214MA060  | S2216MA060 | 8.50    | 3.50    | 0.500            | 6.625   | 4.3          |

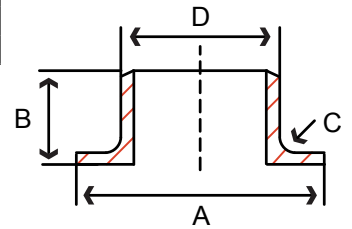
**Fig. S2214MC & S2216MC - Sch 10 MSS Type C Stub End**



| Size<br>in | Part Number |            | A<br>in | B<br>in | C (radius)<br>in | D<br>in | Weight<br>lb |
|------------|-------------|------------|---------|---------|------------------|---------|--------------|
|            | 304/304L    | 316/316L   |         |         |                  |         |              |
| 1/2        | S2214MC004  | S2216MC004 | 1.38    | 2.00    | 0.031            | 0.840   | 0.1          |
| 3/4        | S2214MC006  | S2216MC006 | 1.69    | 2.00    | 0.031            | 1.050   | 0.1          |
| 1          | S2214MC010  | S2216MC010 | 2.00    | 2.00    | 0.031            | 1.315   | 0.3          |
| 1-1/4      | S2214MC012  | S2216MC012 | 2.50    | 2.00    | 0.031            | 1.660   | 0.4          |
| 1-1/2      | S2214MC014  | S2216MC014 | 2.88    | 2.00    | 0.031            | 1.900   | 0.5          |
| 2          | S2214MC020  | S2216MC020 | 3.62    | 2.50    | 0.031            | 2.375   | 0.8          |
| 2-1/2      | S2214MC024  | S2216MC024 | 4.12    | 2.50    | 0.031            | 2.875   | 1.0          |
| 3          | S2214MC030  | S2216MC030 | 5.00    | 2.50    | 0.031            | 3.500   | 1.4          |
| 4          | S2214MC040  | S2216MC040 | 6.19    | 3.00    | 0.063            | 4.500   | 2.1          |
| 5          | S2214MC050  | S2216MC050 | 7.31    | 3.00    | 0.063            | 5.563   | 2.7          |
| 6          | S2214MC060  | S2216MC060 | 8.50    | 3.50    | 0.063            | 6.625   | 4.3          |

**Fig. S2244MA & S2246MA - Sch 40 MSS Type A Stub End**

| Size<br>in | Part Number |            | A<br>in | B<br>in | C (radius)<br>in | D<br>in | Weight<br>lb |
|------------|-------------|------------|---------|---------|------------------|---------|--------------|
|            | 304/304L    | 316/316L   |         |         |                  |         |              |
| 1/2        | S2244MA004  | S2246MA004 | 1.38    | 2.00    | 0.125            | 0.840   | 0.2          |
| 3/4        | S2244MA006  | S2246MA006 | 1.69    | 2.00    | 0.125            | 1.050   | 0.3          |
| 1          | S2244MA010  | S2246MA010 | 2.00    | 2.00    | 0.125            | 1.315   | 0.4          |
| 1-1/4      | S2244MA012  | S2246MA012 | 2.50    | 2.00    | 0.187            | 1.660   | 0.5          |
| 1-1/2      | S2244MA014  | S2246MA014 | 2.88    | 2.00    | 0.250            | 1.900   | 0.8          |
| 2          | S2244MA020  | S2246MA020 | 3.62    | 2.50    | 0.313            | 2.375   | 1.1          |
| 2-1/2      | S2244MA024  | S2246MA024 | 4.12    | 2.50    | 0.313            | 2.875   | 1.7          |
| 3          | S2244MA030  | S2246MA030 | 5.00    | 2.50    | 0.375            | 3.500   | 2.5          |
| 4          | S2244MA040  | S2246MA040 | 6.19    | 3.00    | 0.436            | 4.500   | 4.0          |
| 5          | S2244MA050  | S2246MA050 | 7.31    | 3.00    | 0.436            | 5.563   | 5.6          |
| 6          | S2244MA060  | S2246MA060 | 8.50    | 3.50    | 0.500            | 6.625   | 8.2          |



**SCI ProPak™ System**

### **About ASC Engineered Solutions**

ASC Engineered Solutions is defined by quality—in its products, services and support. With more than 1,400 employees, the company’s portfolio of precision-engineered piping support, valves and connections provides products to more than 4,000 customers across industries, such as mechanical, industrial, fire protection, oil and gas, and commercial and residential construction. Its portfolio of leading brands includes ABZ Valve®, AFCON®, Anvil®, Anvil EPS, Anvil Services, Basic-PSA, Beck®, Catawissa, Cooplet®, FlexHead®, FPPI®, Gruvlok®, J.B. Smith, Merit®, North Alabama Pipe, Quadrant®, SCI®, Sharpe®, SlideLOK®, SPF® and SprinkFLEX®. With headquarters in Commerce, CA, and Exeter, NH, ASC also has ISO 9001:2015 certified production facilities in PA, TN, IL, TX, AL, LA, KS, and RI.



[asc-es.com](http://asc-es.com)

Building connections that last™

