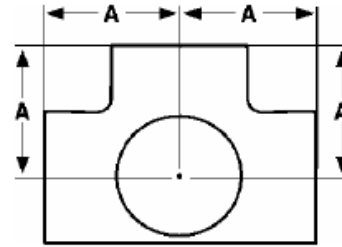




Side Outlet Tee
150# Malleable Iron
Inches / Pounds



Size	A	Approximate Weight (in Pounds)
1/2	1.12	0.36
3/4	1.31	0.56
1	1.50	0.90
1 1/4	1.75	1.30
1 1/2	1.94	1.73
2	2.25	2.63

- *Malleable Castings conform to ASTM A197***
- *Hot-Dipped Galvanized Fittings conform to ASTM A153***
- *Malleable Fitting Dimensions conform to ASME B16.3***
- *Malleable Bushings, Plugs and Locknuts conform to ASME B16.14***
- *Malleable Unions conform to ASME B16.39***
- *NPT Threads on all fittings conform to ASME B1.20.1***