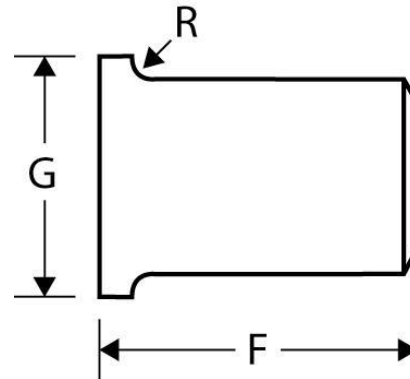




Lap Joint Stub Ends  
**EXTRA HEAVY**  
Inches / Pounds



Nominal Pipe Size	Outside Diameter	Inside Diameter	Wall and Lap Thickness	Lap Diameter (G)	Fillet Radius (R)	Overall Length (F)	Pipe Schedule	Approximate Weight (in Pounds)
1/2	0.84	0.546	0.147	1.38	0.12	3	XH/80	0.38
3/4	1.05	0.742	0.154	1.69	0.12	3	XH/80	0.51
1	1.32	0.957	0.179	2.00	0.12	4	XH/80	1
1 1/4	1.66	1.28	0.191	2.50	0.19	4	XH/80	1.25
1 1/2	1.90	1.50	0.200	2.88	0.25	4	XH/80	1.75
2	2.38	1.94	0.218	3.63	0.31	6	XH/80	3
2 1/2	2.88	2.32	0.276	4.13	0.31	6	XH/80	4.5
3	3.50	2.90	0.300	5.00	0.38	6	XH/80	6.5
3 1/2	4.00	3.36	0.318	5.50	0.38	6	XH/80	7.75
4	4.50	3.83	0.337	6.19	0.44	6	XH/80	9.5
5	5.56	4.81	0.375	7.31	0.44	8	XH/80	17
6	6.63	5.76	0.432	8.50	0.50	8	XH/80	23
8	8.63	7.63	0.500	10.63	0.50	8	XH/80	32
10	10.75	9.75	0.500	12.75	0.50	10	XH/60	53
12	12.75	11.75	0.500	15.00	0.50	10	XH*	62
14	14.00	13.00	0.500	16.25	0.50	12	XH*	75
16	16.00	15.00	0.500	18.50	0.50	12	XH/40	87
18	18.00	17.00	0.500	21.00	0.50	12	XH*	101
20	20.00	19.00	0.500	23.00	0.50	12	XH/30	114
24	24.00	23.00	0.500	27.25	0.50	12	XH*	138

**\* XH\* designates Extra Strong (extra strong wall). This size and thickness do not correspond to any pipe schedule number.**

**\* Dimensions conform to ASME B16.9 & material conforms to ASTM SA-234 Grade B.**