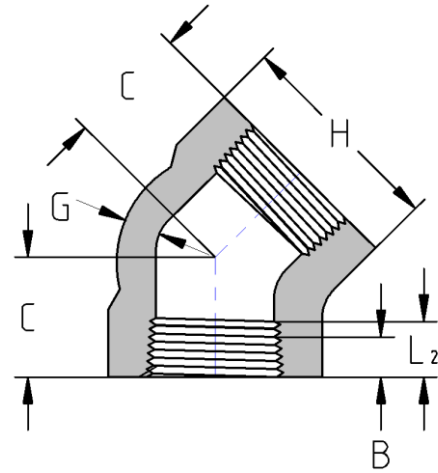




Threaded 45° Elbow
6000# Forged Steel
Inches / Pounds



Nominal Pipe Size	C	H	G (min)	B**	L ₂ ** (min)	Approximate Weight (in Pounds)
1/2	1.12	1.81	0.321	0.43	0.5337	1.44
3/4	1.31	2.19	0.336	0.50	0.5457	2.19
1	1.38	2.44	0.391	0.58	0.6828	2.69
1 1/4	1.69	2.97	0.417	0.67	0.7068	4.69
1 1/2	1.72	3.31	0.436	0.70	0.7235	5.75
2	2.06	4.00	0.476	0.75	0.7565	9.50

***ASME B16.11**

****Dimension B is minimum length of perfect thread. The length of useful thread (B plus threads with fully formed roots and flat crests) shall not be less than L₂ (effective length of external thread) required by ASME B1.20.1**