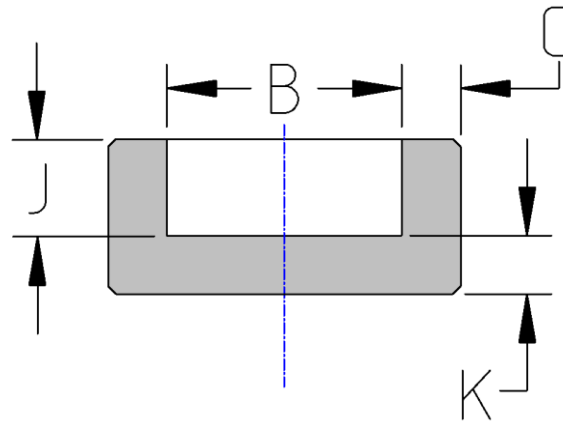




Socket Weld Cap  
**6000# Forged Steel**  
Inches / Pounds



Nominal Pipe size	B Max. Min.	C Avg. Min.	J Min.	K Min.	Approximate Weight (in Pounds)
1/2	0.875 0.855	0.235 0.204	0.38	0.31	0.42
3/4	1.085 1.065	0.274 0.238	0.50	0.31	0.58
1	1.350 1.330	0.312 0.273	0.50	0.44	1.18
1 1/4	1.695 1.675	0.312 0.273	0.50	0.44	1.41
1 1/2	1.935 1.915	0.351 0.307	0.50	0.50	2.17
2	2.426 2.406	0.430 0.374	0.62	0.62	3.67

**\*ASME B16.11**