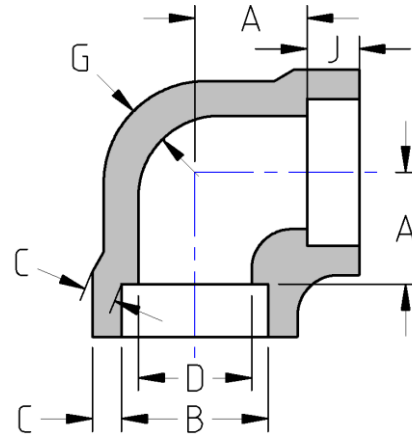




Socket Weld 90° Elbow
6000# Forged Steel
Inches / Pounds



Nominal Pipe Size	A	J Min.	B Max. Min.	C Avg. Min.	D Max. Min.	G Min.	Approximate Weight (in Pounds)
1/2	0.75	0.38	0.875 0.855	0.235 0.204	0.494 0.434	0.188	0.90
3/4	0.88	0.50	1.085 1.065	0.274 0.238	0.642 0.582	0.219	1.48
1	1.06	0.50	1.350 1.330	0.312 0.273	0.845 0.785	0.250	2.46
1 1/4	1.25	0.50	1.695 1.675	0.312 0.273	1.190 1.130	0.250	3.22
1 1/2	1.50	0.50	1.935 1.915	0.351 0.307	1.368 1.308	0.281	5.77
2	1.62	0.62	2.426 2.406	0.430 0.374	1.717 1.657	0.344	6.68

***ASME B16.11**