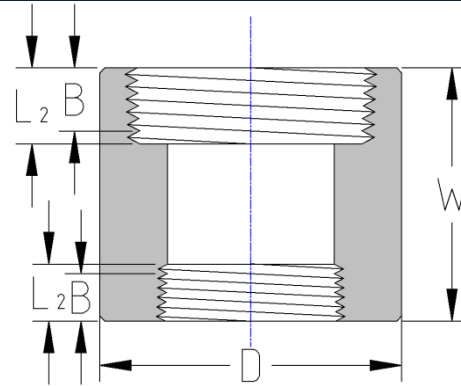




Threaded Reducing
Coupling
3000# Forged Steel
Inches / Pounds



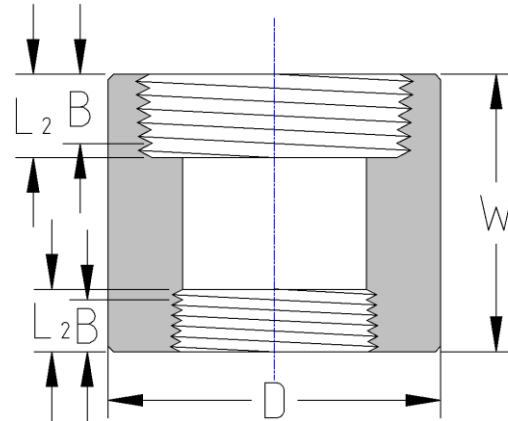
Size	D	W	Approximate Weight (in Pounds)
1/4 x 1/8	0.75	1.38	0.11
3/8 x 1/8	0.88	1.50	0.16
3/8 x 1/4	0.88	1.50	0.16
1/2 x 1/8	1.12	1.88	0.32
1/2 x 1/4	1.12	1.88	0.32
1/2 x 3/8	1.12	1.88	0.32
3/4 x 1/8	1.33	2.00	0.50
3/4 x 1/4	1.33	2.00	0.50
3/4 x 3/8	1.33	2.00	0.50
3/4 x 1/2	1.33	2.00	0.50
1 x 1/8	1.75	2.38	0.98
1 x 1/4	1.75	2.38	0.98
1 x 3/8	1.75	2.38	0.98
1 x 1/2	1.75	2.38	0.98
1 x 3/4	1.75	2.38	0.98
1 1/4 x 1/4	2.25	2.62	1.87
1 1/4 x 3/8	2.25	2.62	1.87
1 1/4 x 1/2	2.25	2.62	1.87
1 1/4 x 3/4	2.25	2.62	1.87
1 1/4 x 1	2.25	2.62	1.87
1 1/2 x 1/4	2.50	3.12	2.41
1 1/2 x 3/8	2.50	3.12	2.41
1 1/2 x 1/2	2.50	3.12	2.41
1 1/2 x 3/4	2.50	3.12	2.41
1 1/2 x 1	2.50	3.12	2.41
1 1/2 x 1 1/4	2.50	3.12	2.41

***ASME B16.11**

****Dimension B is minimum length of perfect thread. The length of useful thread (B plus threads with fully formed roots and flat crests) shall not be less than L₂ (effective length of external thread) required by ASME B1.20.1**



Threaded Reducing
Coupling
3000# Forged Steel
Inches / Pounds



Size	D	W	Approximate Weight (in Pounds)
2 x 1/2	3.00	3.38	3.71
2 x 3/4	3.00	3.38	3.71
2 x 1	3.00	3.38	3.71
2 x 1 1/4	3.00	3.38	3.71
2 x 1 1/2	3.00	3.38	3.71
2 1/2 x 1/2	3.62	3.62	5.92
2 1/2 x 3/4	3.62	3.62	5.92
2 1/2 x 1	3.62	3.62	5.92
2 1/2 x 1 1/4	3.62	3.62	5.92
2 1/2 x 1 1/2	3.62	3.62	5.92
2 1/2 x 2	3.62	3.62	5.92
3 x 3/4	4.25	4.25	10.1
3 x 1	4.25	4.25	10.1
3 x 1 1/4	4.25	4.25	10.1
3 x 1 1/2	4.25	4.25	10.1
3 x 2	4.25	4.25	10.1
3 x 2 1/2	4.25	4.25	10.1
4 x 1 1/2	5.50	4.75	14.7
4 x 2	5.50	4.75	14.7
4 x 2 1/2	5.50	4.75	14.7
4 x 3	5.50	4.75	14.7

***ASME B16.11**

****Dimension B is minimum length of perfect thread. The length of useful thread (B plus threads with fully formed roots and flat crests) shall not be less than L₂ (effective length of external thread) required by ASME B1.20.1**