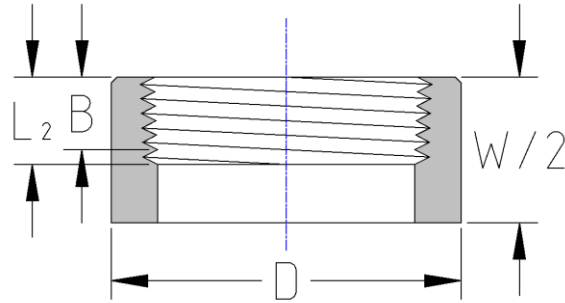




Threaded Half Coupling
3000# Forged Steel
Inches / Pounds



Nominal Pipe size	D	W/2	B**	L2**	Approximate Weight (in Pounds)
1/8	0.62	0.62	0.25	0.2639	0.06
1/4	0.75	0.69	0.32	0.4018	0.05
3/8	0.88	0.75	0.36	0.407	0.06
1/2	1.12	0.94	0.43	0.5337	0.14
3/4	1.33	1.00	0.50	0.5457	0.21
1	1.75	1.17	0.58	0.6828	0.44
1 1/4	2.25	1.31	0.67	0.7068	0.77
1 1/2	2.50	1.56	0.70	0.7235	1.08
2	3.00	1.67	0.75	0.7565	1.48
2 1/2	3.62	1.81	0.93	1.1380	2.37
3	4.25	2.12	1.02	1.2000	3.30
4	5.50	2.37	1.09	1.3000	7.25

***ASME B16.11**

****Dimension B is minimum length of perfect thread. The length of useful thread (B plus threads with fully formed roots and flat crests) shall not be less than L₂ (effective length of external thread) required by ASME B1.20.1**