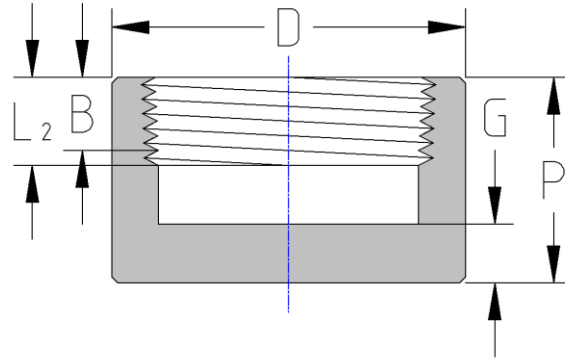




Threaded Cap  
**3000# Forged Steel**  
Inches / Pounds



Nominal pipe size	D	P	G	B	L2	Approximate Weight (in Pounds)
1/8	0.62	0.75	0.19	0.25	0.2639	0.04
1/4	0.75	1.00	0.19	0.32	0.4018	0.07
3/8	0.88	1.00	0.19	0.36	0.4078	0.13
1/2	1.12	1.25	0.25	0.43	0.5337	0.25
3/4	1.38	1.44	0.25	0.50	0.5457	0.36
1	1.75	1.62	0.38	0.58	0.6828	0.62
1 1/4	2.25	1.75	0.38	0.67	0.7068	1.12
1 1/2	2.50	1.75	0.44	0.70	0.7235	1.56
2	3.00	1.88	0.50	0.75	0.7565	2.85
2 1/2	3.62	2.38	0.62	0.93	1.1380	5.00
3	4.25	2.56	0.75	1.02	1.2000	8.50
4	5.50	2.69	0.88	1.09	1.3000	13.5

**\*ASME B16.11**

**\*\*Dimension B is minimum length of perfect thread. The length of useful thread (B plus threads with fully formed roots and flat crests) shall not be less than L<sub>2</sub> (effective length of external thread) required by ASME B1.20.1**