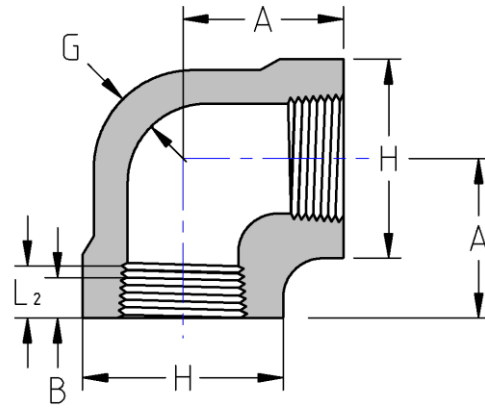




Threaded 90° Elbow  
**2000# Forged Steel**  
Inches / Pounds



Nominal pipe size	A	H	G (Minimum)	B**	L <sub>2</sub> ** (Minimum)	Approximate Weight (in Pounds)
1/8	0.81	0.88	0.125	0.25	0.2639	0.20
1/4	0.81	0.88	0.125	0.32	0.4018	0.18
3/8	0.97	1.00	0.125	0.36	0.4078	0.25
1/2	1.12	1.31	0.125	0.43	0.5337	0.51
3/4	1.31	1.50	0.125	0.50	0.5457	0.73
1	1.50	1.81	0.145	0.58	0.6828	1.07
1 1/4	1.75	2.19	0.153	0.67	0.7068	1.63
1 1/2	2.00	2.44	0.158	0.70	0.7235	2.31
2	2.38	2.97	0.168	0.75	0.7565	3.61
2 1/2	3.00	3.62	0.221	0.93	1.1380	7.60
3	3.38	4.31	0.236	1.02	1.2000	11.9
4	4.19	5.75	0.258	1.09	1.3000	24.0

**\*ASME B16.11**

**\*\*Dimension B is minimum length of perfect thread. The length of useful thread (B plus threads with fully formed roots and flat crests) shall not be less than L<sub>2</sub> (effective length of external thread) required by ASME B1.20.1**