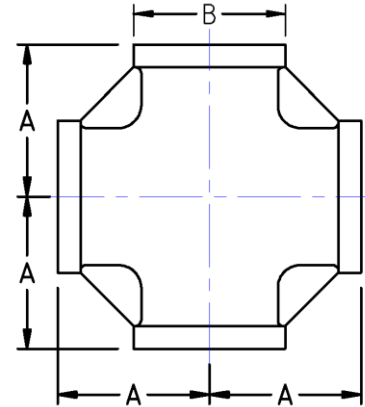




Threaded Cross Std Pattern
150# Cast Stainless Steel
Inches / Pounds



Nominal Pipe Size	Center to End (A)	Outside Diameter (B)	Approx. Weight (in Pounds)
1/8"	0.71	0.63	0.11
1/4"	0.77	0.75	0.17
3/8"	0.93	0.89	0.31
1/2"	1.14	1.11	0.44
3/4"	1.26	1.39	0.58
1"	1.44	1.69	1.03
1-1/4"	1.73	2.05	1.46
1-1/2"	1.89	2.32	1.92
2"	2.23	2.81	2.9
2-1/2"	2.68	3.52	5.5
3"	3.12	4.17	7.5
4"	3.82	5.26	11.4

****The material composition and quality comply with ASTM A351/A351M "Standard Specification for Castings, Austenitic, for Pressure-Containing Parts"***

****NPT Threads on all fittings conform to ASME B1.20.1***