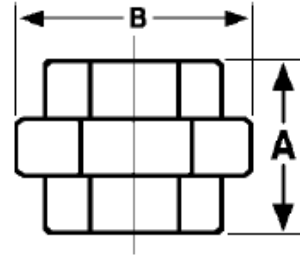




Threaded Union  
**6000# Forged Steel**  
Inches / Pounds



Size	A	B	Approximate Weight (in Pounds)
1/4	1.82	1.69	0.56
3/8	2.00	1.94	0.75
1/2	2.31	2.38	1.25
3/4	2.44	2.78	1.75
1	2.88	3.36	3.00
1 1/4	3.00	3.72	3.75
1 1/2	3.50	4.42	6.00
2	4.12	5.23	10.50

***\*ASTM SA-105, ANSI B16.11***