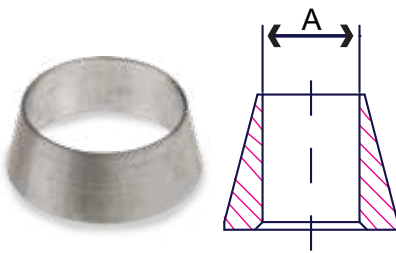


Fig. AFEC & SFEC – Fitting End Closure

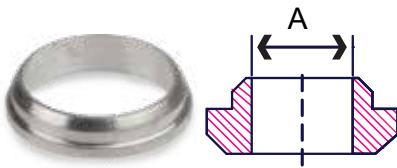
Tube OD in	Part Number		A in	B in	Packing	Weight lb
	Double Ferrule	Single Ferrule				
1/8	S76AFEC001	S76SFEC001	1/8	7/16	100	0.04
1/4	S76AFEC002	S76SFEC002	1/4	9/16	100	0.05
3/8	S76AFEC003	S76SFEC003	3/8	11/16	60	0.09
1/2	S76AFEC004	S76SFEC004	1/2	7/8	20	0.1
5/8	S76AFEC005	-	5/8	1	50	0.1
3/4	S76AFEC006	S76SFEC006	3/4	1-1/8	20	0.2
1	S76AFEC010	-	1	1-1/2	20	0.2

Fig. AFF & SF – Front Ferrule



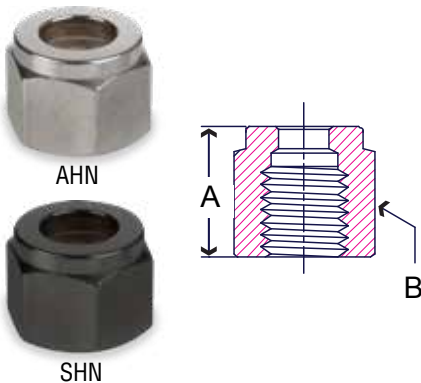
Tube OD in	Part Number		A in	Packing	Weight lb
	Double Ferrule	Single Ferrule			
1/8	S76AFF001	S76SF001	1/8	500	0.007
3/16	S76AFF316	S76SF316	3/16	500	0.007
1/4	S76AFF002	S76SF002	1/4	500	0.009
5/16	S76AFF516	S76SF516	5/16	500	0.01
3/8	S76AFF003	S76SF003	3/8	300	0.01
1/2	S76AFF004	S76SF004	1/2	200	0.01
5/8	S76AFF005	S76SF005	5/8	150	0.04
3/4	S76AFF006	S76SF006	3/4	100	0.05
1	S76AFF010	S76SF010	1	1	0.06

Fig. ABF – Back Ferrule



Tube OD in	Part Number	A in	Packing	Weight lb
1/8	S76ABF001	1/8	500	0.004
3/16	S76ABF316	3/16	500	0.004
1/4	S76ABF002	1/4	500	0.007
5/16	S76ABF516	5/16	500	0.009
3/8	S76ABF003	3/8	300	0.01
1/2	S76ABF004	1/2	200	0.01
5/8	S76ABF005	5/8	150	0.03
3/4	S76ABF006	3/4	100	0.04
1	S76ABF010	1	1	0.05

Fig. AHN & SHN– Hex Nut



Tube OD in	Part Number		A in	B in	Packing	Weight lb
	Double Ferrule	Single Ferrule				
1/8	S76AHN001	S76SHN001	0.47	7/16	100	0.01
1/4	S76AHN002	S76SHN002	0.50	9/16	100	0.02
3/16	S76AHN316	-	0.52	1/2	100	0.22
3/8	S76AHN003	S76SHN003	0.56	11/16	100	0.04
1/2	S76AHN004	S76SHN004	0.69	7/8	60	0.07
5/8	S76AHN005	-	0.69	1	50	0.08
3/4	S76AHN006	S76SHN006	0.69	1-1/8	30	0.09
1	S76AHN010	-	0.81	1-1/2	30	0.09

Please see complete installation instructions at www.smithcooper.com for important guidelines and limitations on the use and applications of SCI compression fittings and instrumentation tubing.

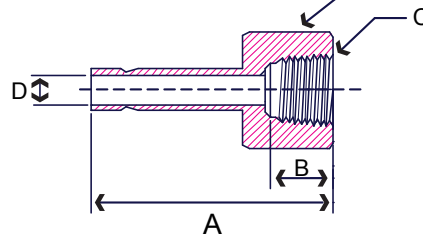


Fig. AFA – Female Adapter

Tube OD x NPT in	Part Number	A in	B in	C in	D in	E in	Packing	Weight lb
1/8 x 1/8	S76AFA001001	1.23	0.41	1/8	0.09	9/16	100	0.07
1/8 x 1/4	S76AFA001002	1.38	0.59	1/4	0.09	3/4	100	0.08
1/4 x 1/8	S76AFA002001	1.29	0.41	1/8	0.19	9/16	100	0.07
1/4 x 1/4	S76AFA002002	1.45	0.59	1/4	0.19	3/4	60	0.07
1/4 x 3/8	S76AFA002003	1.54	0.59	3/8	0.19	7/8	40	0.08
1/4 x 1/2	S76AFA002004	1.78	0.78	1/2	0.19	1-1/16	20	0.1
3/8 x 1/4	S76AFA003002	1.49	0.59	1/4	0.28	3/4	40	0.1
3/8 x 3/8	S76AFA003003	1.58	0.59	3/8	0.28	7/8	40	0.1
1/2 x 1/4	S76AFA004002	1.71	0.59	1/4	0.39	3/4	40	0.1
1/2 x 3/8	S76AFA004003	1.78	0.59	3/8	0.39	7/8	30	0.07
1/2 x 1/2	S76AFA004004	2.03	0.78	1/2	0.39	1-1/16	10	0.1
5/8 x 1/4	S76AFA005002	1.90	0.59	1/4	0.39	15/16	40	0.2
5/8 x 3/8	S76AFA005003	1.90	0.59	3/8	0.39	15/16	40	0.3
5/8 x 1/2	S76AFA005004	2.08	0.78	1/2	0.50	1-1/16	20	0.3
3/4 x 1/2	S76AFA006004	2.08	0.78	1/2	0.59	1-1/16	10	0.4
3/4 x 3/4	S76AFA006006	2.15	0.81	3/4	0.59	1-5/16	10	0.5
3/4 x 1	S76AFA006010	2.29	1.00	1	0.59	1-5/8	10	0.8
1 x 1	S76AFA010010	2.53	1.00	1	0.80	1-5/8	10	0.5

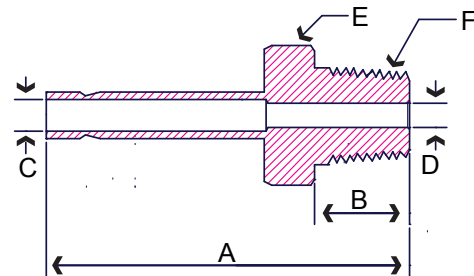


Fig. AMA – Male Adapter

Tube OD x NPT in	Part Number	A in	B in	C in	D in	E in	F in	Packing	Weight lb
1/8 x 1/8	S76AMA001001	1.15	0.38	0.19	0.09	7/16	1/8	100	0.07
1/8 x 1/4	S76AMA001002	1.36	0.56	0.28	0.09	9/16	1/4	100	0.07
1/4 x 1/8	S76AMA002001	1.24	0.38	0.19	0.19	7/16	1/8	100	0.07
1/4 x 1/4	S76AMA002002	1.45	0.56	0.19	0.19	9/16	1/4	100	0.07
1/4 x 3/8	S76AMA002003	1.48	0.56	0.19	0.19	11/16	3/8	60	0.08
1/4 x 1/2	S76AMA002004	1.70	0.75	0.19	0.19	7/8	1/2	30	0.1
5/16 x 1/8	S76AMA516001	1.28	0.38	0.19	0.25	7/16	1/8	100	0.08
5/16 x 1/4	S76AMA516002	1.49	0.56	0.25	0.25	9/16	1/4	100	0.08
3/8 x 1/4	S76AMA003002	1.52	0.56	0.28	0.28	9/16	1/4	60	0.09
3/8 x 3/8	S76AMA003003	1.55	0.56	0.28	0.28	11/16	3/8	60	0.09
3/8 x 1/2	S76AMA003004	1.77	0.75	0.28	0.28	7/8	1/2	40	0.1
1/2 x 1/4	S76AMA004002	1.75	0.56	0.39	0.28	9/16	1/4	30	0.08
1/2 x 3/8	S76AMA004003	1.77	0.56	0.39	0.39	11/16	3/8	30	0.07
1/2 x 1/2	S76AMA004004	1.99	0.75	0.39	0.39	7/8	1/2	30	0.1
5/8 x 1/2	S76AMA005004	2.05	0.75	0.47	0.50	7/8	1/2	20	0.2
3/4 x 1/2	S76AMA006004	2.05	0.75	0.47	0.59	7/8	1/2	10	0.3
3/4 x 3/4	S76AMA006006	2.05	0.75	0.59	0.59	1-1/16	3/4	10	0.6
3/4 x 1	S76AMA006010	2.31	0.94	0.59	0.59	1-3/8	1	10	0.6
1 x 3/4	S76AMA010006	2.31	0.75	0.80	0.62	1-1/16	3/4	10	0.6
1 x 1	S76AMA010010	2.60	0.94	0.80	0.80	1-3/8	1	10	0.6

Please see complete installation instructions at www.smithcooper.com for important guidelines and limitations on the use and applications of SCI compression fittings and instrumentation tubing.



AFBT



SFBT

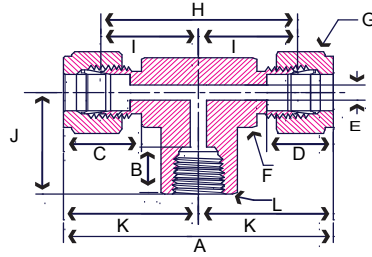


Fig. AFBT – Female Branch Tee Double Ferrule

Tube OD x NPT in	Part Number	A in	B in	C in	D in	E in	F in	G in	H in	I in	J in	K in	L in	Packing	Weight lb
1/8 x 1/8	S76AFBT001001	1.92	0.41	0.60	0.50	0.09	1/2	7/16	1.40	0.70	0.74	0.96	1/8	40	0.1
1/8 x 1/4	S76AFBT001002	2.16	0.59	0.60	0.50	0.09	3/4	7/16	1.64	0.82	0.88	1.08	1/4	30	0.1
3/16 x 1/8	S76AFBT316001	2.00	0.41	0.63	0.54	0.12	1/2	1/2	1.48	0.74	0.75	1.00	1/8	40	0.1
1/4 x 1/8	S76AFBT002001	2.10	0.41	0.70	0.60	0.19	1/2	9/16	1.52	0.76	0.74	1.05	1/8	30	0.1
1/4 x 1/4	S76AFBT002002	2.32	0.59	0.70	0.60	0.19	11/16	9/16	1.74	0.87	0.87	1.16	1/4	30	0.2
3/8 x 1/4	S76AFBT003002	2.44	0.59	0.76	0.66	0.28	11/16	11/16	1.84	0.93	0.87	1.22	1/4	20	0.3
3/8 x 3/8	S76AFBT003003	2.60	0.59	0.76	0.66	0.28	13/16	11/16	2.02	1.01	0.87	1.30	3/8	20	0.3
1/2 x 3/8	S76AFBT004003	2.82	0.59	0.86	0.90	0.41	13/16	7/8	2.02	1.01	0.87	1.41	3/8	10	0.3
1/2 x 1/2	S76AFBT004004	3.04	0.78	0.86	0.90	0.41	1	7/8	2.24	1.12	1.11	1.52	1/2	10	0.5
5/8 x 1/2	S76AFBT005004	3.04	0.78	0.86	0.96	0.50	1	1	2.24	1.12	1.11	1.52	1/2	10	1.1
3/4 x 1/2	S76AFBT006004	3.14	0.78	0.86	0.96	0.62	1-1/16	1-1/8	2.34	1.17	1.12	1.57	1/2	5	1.5
3/4 x 3/4	S76AFBT006006	3.50	0.81	0.86	0.96	0.62	1-3/8	1-1/8	2.70	1.35	1.24	1.75	3/4	5	1.6
1 x 3/4	S76AFBT010006	3.86	0.81	1.04	1.23	0.88	1-7/16	1-1/2	2.90	1.45	1.25	1.93	3/4	5	1.5
1 x 1	S76AFBT010010	4.22	1.00	1.04	1.23	0.88	1-5/8	1-1/2	3.26	1.63	1.50	2.11	1	5	1.6

Fig. SFBT – Female Branch Tee Single Ferrule

Tube OD x NPT in	Part Number	A in	B in	C in	D in	E in	F in	G in	H in	I in	J in	K in	L in	Packing	Weight lb
1/4 x 1/4	S76SFBT002002	2.32	0.59	0.70	0.60	0.19	11/16	9/16	1.74	0.87	0.87	1.16	1/4	30	0.2
1/2 x 3/8	S76SFBT004003	2.82	0.59	0.86	0.90	0.41	13/16	7/8	2.02	1.01	0.87	1.41	3/8	10	0.3
1/2 x 1/2	S76SFBT004004	3.04	0.78	0.86	0.90	0.41	1	7/8	2.24	1.12	1.11	1.52	1/2	10	0.5



AUT



SUT

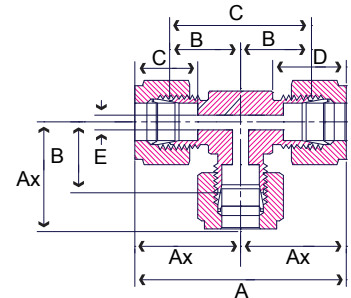


Fig. AUT – Union Tee Double Ferrule

Tube OD in	Part Number	A in	B in	C in	D in	E in	F in	G in	Packing	Weight lb
1/8	S76AUT001	1.76	1.22	0.87	0.50	0.09	3/8	7/16	40	0.2
3/16	S76AUT316	1.92	1.40	0.96	0.54	0.12	1/2	1/2	40	0.1
1/4	S76AUT002	2.12	1.52	1.05	0.60	0.19	1/2	9/16	30	0.2
5/16	S76AUT516	2.34	1.74	1.16	0.64	0.25	5/8	5/8	20	0.3
3/8	S76AUT003	2.40	1.80	1.19	0.66	0.28	5/8	11/16	20	0.4
1/2	S76AUT004	2.84	2.02	1.41	0.96	0.41	13/16	7/8	10	0.7
5/8	S76AUT005	3.06	2.24	1.52	0.96	0.50	1	1	10	0.8
3/4	S76AUT006	3.14	2.32	1.56	0.96	0.62	1-1/16	1-1/8	5	1.0
1	S76AUT010	3.86	2.88	1.92	1.23	0.88	1-3/8	1-1/2	1	1.0

Fig. SUT – Union Tee Single Ferrule

Tube OD in	Part Number	A in	B in	C in	D in	E in	F in	G in	Packing	Weight lb
1/8	S76SUT001	1.76	1.22	0.87	0.50	0.09	3/8	7/16	40	0.2
1/4	S76SUT002	2.12	1.52	1.05	0.60	0.19	1/2	9/16	30	0.2
3/8	S76SUT003	2.40	1.80	1.19	0.66	0.28	5/8	11/16	20	0.4
1/2	S76SUT004	2.84	2.02	1.41	0.96	0.41	13/16	7/8	10	0.7
5/8	S76SUT005	3.06	2.24	1.52	0.96	0.50	1	1	10	0.8
3/4	S76SUT006	3.14	2.32	1.56	0.96	0.62	1-1/16	1-1/8	5	1.0
1	S76SUT010	3.86	2.88	1.92	1.23	0.88	1-3/8	1-1/2	1	1.0

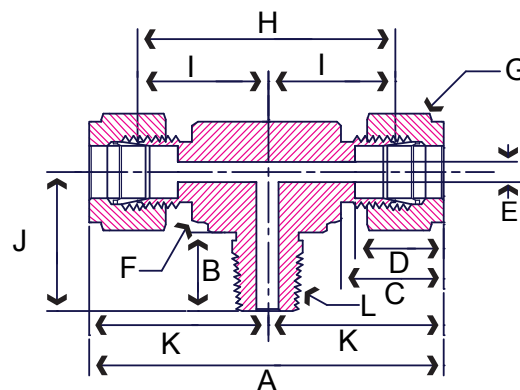


Fig. AMBT – Male Branch Tee Double Ferrule

Tube OD x NPT in	Part Number	A in	B in	C in	D in	E in	F in	G in	H in	I in	J in	K in	L in	Packing	Weight lb
1/8 x 1/8	S76AMBT001001	1.84	0.38	0.60	0.50	0.09	7/16	7/16	1.32	0.66	0.69	1.84	1/8	40	0.1
1/8 x 1/4	S76AMBT001002	1.92	0.56	0.60	0.50	0.09	1/2	7/16	1.40	0.70	0.91	1.92	1/4	30	0.1
3/16 x 1/8	S76AMBT316001	1.92	0.38	0.63	0.54	0.12	1/2	1/2	1.40	0.70	0.70	0.96	1/8	40	0.1
1/4 x 1/8	S76AMBT002001	2.10	0.38	0.70	0.60	0.19	1/2	9/16	1.52	0.76	0.73	2.10	1/8	30	0.1
1/4 x 1/4	S76AMBT002002	2.10	0.56	0.70	0.60	0.19	1/2	9/16	1.52	0.76	0.91	2.10	1/4	30	0.1
1/4 x 1/2	S76AMBT002004	2.50	0.75	0.70	0.60	0.19	7/8	9/16	1.92	0.96	1.30	1.25	1/2	20	0.2
5/16 x 1/8	S76AMBT516001	2.34	0.38	0.73	0.64	0.19	5/8	5/8	1.76	0.88	0.82	1.17	1/8	40	0.1
3/8 x 1/4	S76AMBT003002	2.38	0.56	0.76	0.66	0.28	5/8	11/16	1.80	0.90	0.99	2.38	1/4	30	0.2
3/8 x 3/8	S76AMBT003003	2.60	0.56	0.76	0.66	0.28	13/16	11/16	2.02	1.01	1.10	2.60	3/8	20	0.2
1/2 x 3/8	S76AMBT004003	2.82	0.56	0.86	0.90	0.38	13/16	7/8	2.02	1.01	1.10	2.82	3/8	10	0.4
1/2 x 1/2	S76AMBT004004	2.82	0.75	0.86	0.90	0.41	13/16	7/8	2.02	1.01	1.29	2.82	1/2	10	0.7
5/8 x 1/2	S76AMBT005004	3.04	0.75	0.86	0.96	0.47	1	1	2.24	1.12	1.40	3.04	1/2	1	0.8
3/4 x 1/2	S76AMBT006004	3.14	0.75	0.86	0.96	0.47	1-1/16	1-1/8	2.34	1.17	1.45	1.57	1/2	5	0.3
3/4 x 3/4	S76AMBT006006	3.12	0.75	0.86	0.96	0.62	1-1/16	1-1/8	2.32	1.16	1.44	3.12	3/4	5	0.8
1 x 3/4	S76AMBT010006	3.86	0.75	1.04	1.23	0.62	1-7/16	1-1/2	2.90	1.45	1.64	1.93	3/4	5	0.3
1 x 1	S76AMBT010010	3.86	0.94	1.04	1.23	0.88	1-7/16	1-1/2	2.90	1.45	1.83	1.93	1	5	0.6

Fig. SMBT – Male Branch Tee Single Ferrule

Tube OD x NPT in	Part Number	A in	B in	C in	D in	E in	F in	G in	H in	I in	J in	K in	L in	Packing	Weight lb
1/4 x 1/8	S76SMBT002001	2.10	0.38	0.70	0.60	0.19	1/2	9/16	1.52	0.76	0.73	2.10	1/8	30	0.1
1/4 x 1/4	S76SMBT002002	2.10	0.56	0.70	0.60	0.19	1/2	9/16	1.52	0.76	0.91	2.10	1/4	30	0.1
3/8 x 1/4	S76SMBT003002	2.38	0.56	0.76	0.66	0.28	5/8	11/16	1.80	0.90	0.99	2.38	1/4	30	0.2
1/2 x 1/2	S76SMBT004004	2.82	0.75	0.86	0.90	0.41	13/16	7/8	2.02	1.01	1.29	2.82	1/2	10	0.7
3/4 x 1/2	S76SMBT006004	3.14	0.75	0.86	0.96	0.47	1-1/16	1-1/8	2.34	1.17	1.45	1.57	1/2	5	0.3
1 x 1	S76SMBT010010	3.86	0.94	1.04	1.23	0.88	1-7/16	1-1/2	2.90	1.45	1.83	1.93	1	5	0.6



Please see complete installation instructions at www.smithcooper.com for important guidelines and limitations on the use and applications of SCI compression fittings and instrumentation tubing.

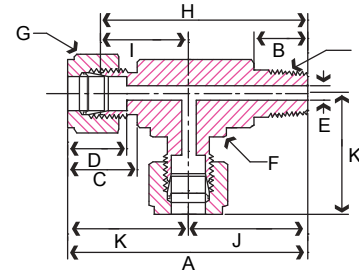


Fig. AMRT – Male Run Tee Double Ferrule

Tube OD x NPT in	Part Number	A in	B in	C in	D in	E in	F in	G in	H in	I in	J in	K in	L in	Packing	Weight lb
1/8 x 1/8	S76AMRT001001	1.61	0.38	0.60	0.50	0.09	7/16	7/16	1.35	0.66	0.92	0.93	1/8	40	0.1
1/8 x 1/4	S76AMRT001002	1.87	0.56	0.60	0.50	0.09	1/2	7/16	1.61	0.70	0.96	0.97	1/4	30	0.1
3/16 x 1/8	S76AMRT316001	1.66	0.38	0.63	0.54	0.12	1/2	1/2	1.40	0.70	0.70	0.96	1/8	40	0.1
1/4 x 1/8	S76AMRT002001	1.98	0.38	0.70	0.60	0.19	1/2	9/16	1.48	0.76	1.05	1.06	1/8	30	0.1
1/4 x 1/4	S76AMRT002002	1.96	0.56	0.70	0.60	0.19	1/2	9/16	1.67	0.76	1.05	1.06	1/4	30	0.1
5/16 x 1/8	S76AMRT516001	1.99	0.38	0.73	0.64	0.19	5/8	5/8	1.70	0.88	0.82	1.17	1/8	40	0.1
3/8 x 1/4	S76AMRT003002	2.18	0.56	0.76	0.66	0.28	5/8	11/16	1.89	0.90	1.19	1.20	1/4	20	0.2
3/8 x 3/8	S76AMRT003003	2.40	0.56	0.76	0.66	0.28	13/16	11/16	2.11	1.01	1.30	1.31	3/8	10	0.2
1/2 x 3/8	S76AMRT004003	2.51	0.56	0.86	0.90	0.38	13/16	7/8	2.11	1.01	1.41	1.42	3/8	10	0.4
1/2 x 1/2	S76AMRT004004	2.70	0.75	0.86	0.90	0.41	13/16	7/8	2.30	1.01	1.41	1.42	1/2	10	0.7
5/8 x 1/2	S76AMRT005004	2.86	0.75	0.86	0.96	0.47	15/16	1	2.46	1.00	1.49	1.50	1/2	10	0.8
3/4 x 1/2	S76AMRT006004	3.02	0.75	0.86	0.96	0.47	1-1/16	1-1/8	2.62	1.17	1.45	1.57	1/2	5	0.8
3/4 x 3/4	S76AMRT006006	3.00	0.75	0.86	0.96	0.62	1-1/16	1-1/8	2.60	1.16	1.56	1.57	3/4	5	1.3

Fig. SMRT – Male Run Tee Single Ferrule

Tube OD x NPT in	Part Number	A in	B in	C in	D in	E in	F in	G in	H in	I in	J in	K in	L in	Packing	Weight lb
1/4 x 1/4	S76SMRT002002	1.96	0.56	0.70	0.60	0.19	1/2	9/16	1.67	0.76	1.05	1.06	1/4	30	0.1
3/8 x 1/4	S76SMRT003002	2.18	0.56	0.76	0.66	0.28	5/8	11/16	1.89	0.90	1.19	1.20	1/4	20	0.2
3/8 x 3/8	S76SMRT003003	2.40	0.56	0.76	0.66	0.28	13/16	11/16	2.11	1.01	1.30	1.31	3/8	10	0.2
1/2 x 3/8	S76SMRT004003	2.51	0.56	0.86	0.90	0.38	13/16	7/8	2.11	1.01	1.41	1.42	3/8	10	0.4

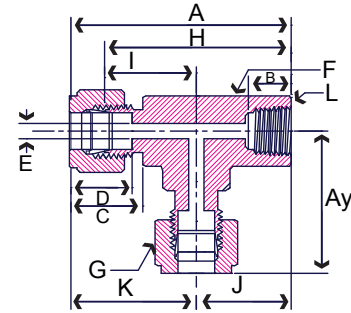


Fig. AFRT – Female Run Tee Double Ferrule

Tube OD x NPT in	Part Number	A in	B in	C in	D in	E in	F in	G in	H in	I in	J in	K in	L in	Packing	Weight lb
1/8 x 1/8	S76AFRT001001	1.71	0.41	0.60	0.50	0.09	1/2	7/16	1.44	0.70	0.74	0.96	1/8	40	0.1
1/8 x 1/4	S76AFRT001002	1.96	0.59	0.60	0.50	0.09	3/4	7/16	1.07	0.82	0.88	1.08	1/4	30	0.1
1/4 x 1/8	S76AFRT002001	1.81	0.41	0.70	0.60	0.19	1/2	9/16	1.50	0.76	0.74	1.05	1/8	40	0.1
1/4 x 1/4	S76AFRT002002	2.05	0.59	0.70	0.60	0.19	11/16	9/16	1.79	0.87	0.87	1.16	1/4	30	0.2
3/16 x 1/8	S76AFRT316001	1.75	0.41	0.63	0.54	0.12	1/2	1/2	1.49	0.74	0.75	1.00	1/8	40	0.1
3/8 x 1/4	S76AFRT003002	2.10	0.59	0.76	0.66	0.28	11/16	11/16	1.79	0.93	0.87	1.22	1/4	20	0.3
3/8 x 3/8	S76AFRT003003	2.17	0.59	0.76	0.66	0.28	7/8	11/16	1.88	1.01	0.87	1.30	3/8	10	0.3
1/2 x 3/8	S76AFRT004003	2.29	0.59	0.86	0.90	0.41	13/16	7/8	1.88	1.01	0.87	1.41	3/8	10	0.3
1/2 x 1/2	S76AFRT004004	2.68	0.78	0.86	0.90	0.41	1-1/16	7/8	2.27	1.16	1.12	1.56	1/2	10	0.5
5/8 x 1/2	S76AFRT005004	2.64	0.78	0.86	0.96	0.50	1-1/16	1.00	2.24	1.12	1.12	1.52	1/2	10	1.1
3/4 x 1/2	S76AFRT006004	2.69	0.78	0.86	0.96	0.62	1-1/16	1-1/8	2.29	1.17	1.12	1.57	3/4	5	1.5
3/4 x 3/4	S76AFRT006006	3.00	0.81	0.86	0.96	0.62	1-3/8	1-1/8	2.59	1.35	1.24	1.75	3/4	5	1.6
1 x 3/4	S76AFRT010006	3.17	0.81	1.04	1.23	0.88	1-3/8	1-1/2	2.68	1.44	1.24	1.92	3/4	5	1.5
1 x 1	S76AFRT010010	3.60	1.00	1.04	1.23	0.88	1-11/16	1-1/2	3.11	1.62	1.49	2.10	1	5	1.6

Fig. SFRT – Female Run Tee Single Ferrule

Tube OD x NPT in	Part Number	A in	B in	C in	D in	E in	F in	G in	H in	I in	J in	K in	L in	Packing	Weight lb
1/4 x 1/4	S76SFRT002002	2.05	0.59	0.70	0.60	0.19	11/16	9/16	1.79	0.87	0.87	1.16	1/4	30	0.2
3/8 x 1/4	S76SFRT003002	2.10	0.59	0.76	0.66	0.28	11/16	11/16	1.79	0.93	0.87	1.22	1/4	20	0.3



Fig. AMC – Male Connector Double Ferrule

Tube OD x NPT in	Part Number	A in	B in	C in	D in	E in	F in	G in	H in	I in	Packing	Weight lb
1/8 x 1/8	S76AMC001001	1.19	0.38	0.60	0.50	0.09	7/16	7/16	0.93	1/8	100	0.08
1/8 x 1/4	S76AMC001002	1.39	0.56	0.60	0.50	0.09	9/16	7/16	1.13	1/4	100	0.08
3/16 x 1/8	S76AMC316001	1.23	0.38	0.63	0.54	0.12	7/16	1/2	0.97	1/8	100	0.08
3/16 x 1/4	S76AMC316002	1.43	0.56	0.63	0.54	0.12	9/16	1/2	1.17	1/4	30	0.08
1/4 x 1/8	S76AMC002001	1.28	0.38	0.70	0.60	0.19	1/2	9/16	0.99	1/8	100	0.07
1/4 x 1/4	S76AMC002002	1.48	0.56	0.70	0.60	0.19	9/16	9/16	1.19	1/4	100	0.08
1/4 x 3/8	S76AMC002003	1.50	0.56	0.70	0.60	0.19	11/16	9/16	1.21	3/8	60	0.09
1/4 x 1/2	S76AMC002004	1.75	0.75	0.70	0.60	0.19	7/8	9/16	1.46	1/2	30	0.1
5/16 x 1/8	S76AMC516001	1.34	0.38	0.73	0.64	0.19	9/16	5/8	1.05	1/8	100	0.1
5/16 x 1/4	S76AMC516002	1.51	0.56	0.73	0.64	0.25	9/16	5/8	1.22	1/4	40	0.1
3/8 x 1/8	S76AMC003001	1.38	0.38	0.76	0.66	0.19	5/8	11/16	1.09	1/8	100	0.1
3/8 x 1/4	S76AMC003002	1.56	0.56	0.76	0.66	0.28	5/8	11/16	1.27	1/4	60	0.1
3/8 x 3/8	S76AMC003003	1.56	0.56	0.76	0.66	0.28	11/16	11/16	1.27	3/8	40	0.1
3/8 x 1/2	S76AMC003004	1.81	0.75	0.76	0.66	0.28	7/8	11/16	1.52	1/2	30	0.1
1/2 x 1/4	S76AMC004002	1.70	0.56	0.86	0.90	0.28	13/16	7/8	1.30	1/4	30	0.1
1/2 x 3/8	S76AMC004003	1.70	0.56	0.86	0.90	0.38	13/16	7/8	1.30	3/8	30	0.1
1/2 x 1/2	S76AMC004004	1.92	0.75	0.86	0.90	0.41	7/8	7/8	1.52	1/2	30	0.2
1/2 x 3/4	S76AMC004006	1.98	0.75	0.86	0.96	0.41	1-1/16	7/8	1.58	3/4	20	0.2
5/8 x 3/8	S76AMC005003	1.73	0.56	0.86	0.96	0.38	15/16	1	1.33	3/8	20	0.2
5/8 x 1/2	S76AMC005004	1.92	0.75	0.86	0.96	0.47	15/16	1	1.52	1/2	20	0.3
3/4 x 1/2	S76AMC006004	1.98	0.75	0.86	0.96	0.47	1-1/16	1-1/8	1.58	1/2	15	0.4
3/4 x 3/4	S76AMC006006	1.98	0.75	0.86	0.96	0.62	1-1/16	1-1/8	1.58	3/4	15	0.4
3/4 x 1	S76AMC006010	2.24	0.94	0.86	0.96	0.62	1-3/8	1-1/8	1.84	1	10	0.5
1 x 3/4	S76AMC010006	2.26	0.75	1.04	1.23	0.62	1-3/8	1-1/2	1.78	3/4	15	0.4
1 x 1	S76AMC010010	2.45	0.94	1.04	1.23	0.88	1-3/8	1-1/2	1.97	1	10	0.5

Fig. SMC – Male Connector Single Ferrule

Tube OD x NPT in	Part Number	A in	B in	C in	D in	E in	F in	G in	H in	I in	Packing	Weight lb
1/8 x 1/8	S76SMC001001	1.19	0.38	0.60	0.50	0.09	7/16	7/16	0.93	1/8	100	0.08
1/8 x 1/4	S76SMC001002	1.39	0.56	0.60	0.50	0.09	9/16	7/16	1.13	1/4	100	0.08
1/4 x 1/8	S76SMC002001	1.28	0.38	0.70	0.60	0.19	1/2	9/16	0.99	1/8	100	0.07
1/4 x 1/4	S76SMC002002	1.48	0.56	0.70	0.60	0.19	9/16	9/16	1.19	1/4	100	0.08
1/4 x 3/8	S76SMC002003	1.50	0.56	0.70	0.60	0.19	11/16	9/16	1.21	3/8	60	0.09
1/4 x 1/2	S76SMC002004	1.75	0.75	0.70	0.60	0.19	7/8	9/16	1.46	1/2	30	0.1
5/16 x 1/4	S76SMC516002	1.51	0.56	0.73	0.64	0.25	9/16	5/8	1.22	1/4	40	0.1
3/8 x 1/8	S76SMC003001	1.38	0.38	0.76	0.66	0.19	5/8	11/16	1.09	1/8	100	0.1
3/8 x 1/4	S76SMC003002	1.56	0.56	0.76	0.66	0.28	5/8	11/16	1.27	1/4	60	0.1
3/8 x 3/8	S76SMC003003	1.56	0.56	0.76	0.66	0.28	11/16	11/16	1.27	3/8	40	0.1
3/8 x 1/2	S76SMC003004	1.81	0.75	0.76	0.66	0.28	7/8	11/16	1.52	1/2	30	0.1
1/2 x 1/4	S76SMC004002	1.70	0.56	0.86	0.90	0.28	13/16	7/8	1.30	1/4	30	0.1
1/2 x 3/8	S76SMC004003	1.70	0.56	0.86	0.90	0.38	13/16	7/8	1.30	3/8	30	0.1
1/2 x 1/2	S76SMC004004	1.92	0.75	0.86	0.90	0.41	7/8	7/8	1.52	1/2	30	0.2
1/2 x 3/4	S76SMC004006	1.98	0.75	0.86	0.96	0.41	1-1/16	7/8	1.58	3/4	20	0.2
5/8 x 1/2	S76SMC005004	1.92	0.75	0.86	0.96	0.47	15/16	1	1.52	1/2	20	0.3
3/4 x 1/2	S76SMC006004	1.98	0.75	0.86	0.96	0.47	1-1/16	1-1/8	1.58	1/2	15	0.4
3/4 x 3/4	S76SMC006006	1.98	0.75	0.86	0.96	0.62	1-1/16	1-1/8	1.58	3/4	15	0.4
1 x 3/4	S76SMC010006	2.26	0.75	1.04	1.23	0.62	1-3/8	1-1/2	1.78	3/4	15	0.4
1 x 1	S76SMC010010	2.45	0.94	1.04	1.23	0.88	1-3/8	1-1/2	1.97	1	10	0.5

Please see complete installation instructions at www.smithcooper.com for important guidelines and limitations on the use and applications of SCI compression fittings and instrumentation tubing.



ARU



SRU

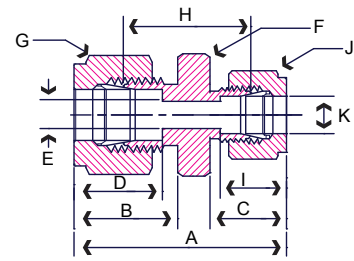


Fig. ARU – Reducing Union Double Ferrule

Tube OD in	Part Number	A in	B in	C in	D in	E in	F in	G in	H in	I in	J in	K in	Packing	Weight lb
1/4 x 1/8	S76ARU002001	1.51	0.70	0.60	0.60	0.09	1/2	9/16	0.96	0.50	7/16	1/8	100	0.08
5/16 x 1/4	S76ARU516002	1.65	0.73	0.70	0.64	0.19	9/16	5/8	1.07	0.60	9/16	1/4	60	0.1
3/16 x 1/8	S76ARU316001	1.67	0.74	0.70	0.65	0.19	1/2	7/16	1.09	0.60	9/16	1/4	60	0.1
3/8 x 1/4	S76ARU003002	1.69	0.76	0.70	0.66	0.19	5/8	11/16	1.11	0.60	9/16	1/4	40	0.1
1/2 x 1/4	S76ARU004002	1.84	0.86	0.70	0.90	0.19	13/16	7/8	1.15	0.60	9/16	1/4	20	0.3
1/2 x 3/8	S76ARU004003	1.90	0.86	0.76	0.90	0.28	13/16	7/8	1.21	0.66	11/16	3/8	20	0.3
5/8 x 3/8	S76ARU005003	1.93	0.86	0.76	0.96	0.28	15/16	1	1.24	0.66	11/16	3/8	30	0.4
5/8 x 1/2	S76ARU005004	2.04	0.86	0.86	0.96	0.41	15/16	1	1.24	0.90	7/8	1/2	30	0.4
3/4 x 1/2	S76ARU006004	2.10	0.86	0.86	0.96	0.50	1-1/16	1-1/8	1.30	0.90	7/8	1/2	10	0.5
3/4 x 5/8	S76ARU006005	2.10	0.86	0.86	0.96	0.62	1-1/16	1-1/8	1.30	0.96	1	5/8	10	0.5
1 x 3/4	S76ARU010006	2.10	1.04	0.86	0.96	0.62	1-3/8	1-1/2	1.58	1.23	1-1/8	3/4	1	0.5

Fig. SRU – Reducing Union Single Ferrule

Tube OD in	Part Number	A in	B in	C in	D in	E in	F in	G in	H in	I in	J in	K in	Packing	Weight lb
1/4 x 1/8	S76SRU002001	1.51	0.70	0.60	0.60	0.09	1/2	9/16	0.96	0.50	7/16	1/8	100	0.08
3/8 x 1/4	S76SRU003002	1.69	0.76	0.70	0.66	0.19	5/8	11/16	1.11	0.60	9/16	1/4	40	0.1
1/2 x 1/4	S76SRU004002	1.84	0.86	0.70	0.90	0.19	13/16	7/8	1.15	0.60	9/16	1/4	20	0.3
3/4 x 1/2	S76SRU006004	2.10	0.86	0.86	0.96	0.50	1-1/16	1-1/8	1.30	0.90	7/8	1/2	10	0.5



ATEC



STEC

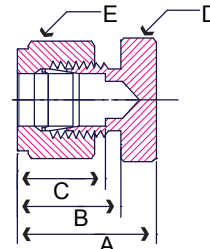


Fig. ATEC – Tube End Closure (Cap) Double Ferrule

Tube OD in	Part Number	A in	B in	C in	D in	E in	F in	Packing	Weight lb
1/8	S76ATEC001	0.78	0.60	0.50	7/16	7/16	0.52	100	0.06
3/16	S76ATEC316	0.84	0.63	0.54	7/16	1/2	0.58	100	0.07
1/4	S76ATEC002	0.92	0.70	0.60	1/2	9/16	0.62	100	0.07
5/16	S76ATEC516	0.96	0.73	0.64	9/16	5/8	0.65	100	0.1
3/8	S76ATEC003	1.00	0.76	0.66	5/8	11/16	0.71	60	0.1
1/2	S76ATEC004	1.14	0.86	0.90	13/16	7/8	0.74	30	0.1
5/8	S76ATEC005	1.17	0.86	0.96	15/16	1	0.77	40	0.3
3/4	S76ATEC006	1.23	0.86	0.96	1-1/16	1-1/8	0.83	10	0.3
1	S76ATEC010	1.80	1.04	1.23	1-3/8	1-1/2	1.02	1	0.5

Fig. STEC – Tube End Closure (Cap) Single Ferrule

Tube OD in	Part Number	A in	B in	C in	D in	E in	F in	Packing	Weight lb
1/4	S76STEC002	0.92	0.70	0.60	1/2	9/16	0.62	100	0.07
5/16	S76STEC516	0.96	0.73	0.64	9/16	5/8	0.65	100	0.1
3/8	S76STEC003	1.00	0.76	0.66	5/8	11/16	0.71	60	0.1
1/2	S76STEC004	1.14	0.86	0.90	13/16	7/8	0.74	30	0.1

Please see complete installation instructions at www.smithcooper.com for important guidelines and limitations on the use and applications of SCI compression fittings and instrumentation tubing.

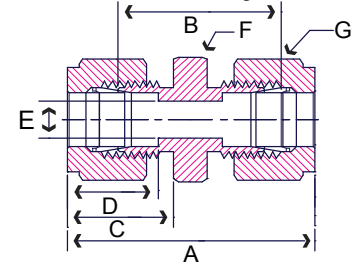


Fig. ASU – Straight Union Double Ferrule

Tube OD in	Part Number	A in	B in	C in	D in	E in	F in	G in	Packing	Weight lb
1/8	S76ASU001	1.39	0.87	0.60	0.50	0.09	7/16	7/16	100	0.08
3/16	S76ASU316	1.47	0.95	0.63	0.54	0.12	7/16	1/2	100	0.1
1/4	S76ASU002	1.60	1.02	0.70	0.60	0.19	1/2	9/16	60	0.1
5/16	S76ASU516	1.68	1.10	0.73	0.64	0.25	9/16	5/8	40	0.1
3/8	S76ASU003	1.75	1.18	0.76	0.66	0.28	5/8	11/16	40	0.1
1/2	S76ASU004	2.01	1.21	0.86	0.90	0.41	13/16	7/8	20	0.3
5/8	S76ASU005	2.04	1.24	0.86	0.96	0.50	15/16	1	30	0.4
3/4	S76ASU006	2.10	1.30	0.86	0.96	0.62	1-1/16	1-1/8	10	0.5
1	S76ASU010	2.54	1.58	1.04	1.23	0.88	1-3/8	1-1/2	10	0.7

Fig. SSU – Straight Union Single Ferrule

Tube OD in	Part Number	A in	B in	C in	D in	E in	F in	G in	Packing	Weight lb
1/8	S76SSU001	1.39	0.87	0.60	0.50	0.09	7/16	7/16	100	0.08
3/16	S76SSU316	1.47	0.95	0.63	0.54	0.12	7/16	1/2	100	0.1
1/4	S76SSU002	1.60	1.02	0.70	0.60	0.19	1/2	9/16	60	0.1
5/16	S76SSU516	1.68	1.10	0.73	0.64	0.25	9/16	5/8	40	0.1
3/8	S76SSU003	1.75	1.18	0.76	0.66	0.28	5/8	11/16	40	0.1
1/2	S76SSU004	2.01	1.21	0.86	0.90	0.41	13/16	7/8	20	0.3
5/8	S76SSU005	2.04	1.24	0.86	0.96	0.50	15/16	1	30	0.4
3/4	S76SSU006	2.10	1.30	0.86	0.96	0.62	1-1/16	1-1/8	10	0.5
1	S76SSU010	2.54	1.58	1.04	1.23	0.88	1-3/8	1-1/2	10	0.7

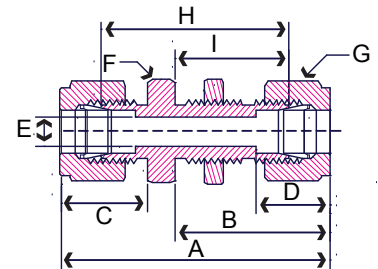


Fig. ABHU – Bulkhead Union Double Ferrule

Tube OD in	Part Number	A in	B in	C in	D in	E in	F in	G in	H in	I in	Packing	Weight lb
1/8	S76ABHU001	2.01	1.22	0.60	0.50	0.09	1/2	7/16	1.49	0.96	100	0.09
3/16	S76SBHU316	2.11	1.26	0.63	0.54	0.12	9/16	1/2	1.59	1.00	100	0.1
1/4	S76ABHU002	2.26	1.31	0.70	0.60	0.19	5/8	9/16	1.68	1.02	60	0.1
5/16	S76ABHU516	2.38	1.40	0.73	0.64	0.25	11/16	5/8	1.80	1.11	40	0.1
3/8	S76ABHU003	2.44	1.44	0.76	0.66	0.28	3/4	11/16	1.86	1.15	30	0.2
1/2	S76ABHU004	2.79	1.64	0.86	0.90	0.41	15/16	7/8	1.99	1.24	20	0.3
5/8	S76ABHU005	2.85	1.67	0.86	0.96	0.50	1-1/16	1	2.05	1.27	20	0.5
3/4	S76ABHU006	3.10	1.86	0.86	0.96	0.63	1-3/16	1-1/8	2.30	1.46	10	0.7
1	S76ABHU010	3.76	2.25	1.04	1.23	0.88	1-5/8	1-1/2	2.80	1.77	10	0.9

Fig. SBHU – Bulkhead Union Single Ferrule

Tube OD in	Part Number	A in	B in	C in	D in	E in	F in	G in	H in	I in	Packing	Weight lb
1/8	S76SBHU001	2.01	1.22	0.60	0.50	0.09	1/2	7/16	1.49	0.96	100	0.09
1/4	S76SBHU002	2.26	1.31	0.70	0.60	0.19	5/8	9/16	1.68	1.02	60	0.1
3/8	S76SBHU003	2.44	1.44	0.76	0.66	0.28	3/4	11/16	1.86	1.15	30	0.2
1/2	S76SBHU004	2.79	1.64	0.86	0.90	0.41	15/16	7/8	1.99	1.24	20	0.3
3/4	S76SBHU006	3.10	1.86	0.86	0.96	0.63	1-3/16	1-1/8	2.30	1.46	10	0.7

Please see complete installation instructions at www.smithcooper.com for important guidelines and limitations on the use and applications of SCI compression fittings and instrumentation tubing.

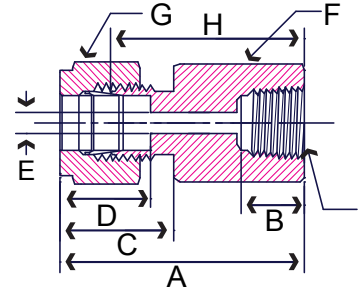


Fig. AFC – Female Connector Double Ferrule

Tube OD x NPT in	Part Number	A in	B in	C in	D in	E in	F in	G in	H in	I in	Packing	Weight lb
1/8 x 1/8	S76AFC001001	1.12	0.40	0.60	0.50	0.09	9/16	7/16	0.86	1/8	30	0.08
1/8 x 1/4	S76AFC001002	1.31	0.59	0.60	0.50	0.09	3/4	7/16	1.05	1/4	30	0.09
3/16 x 1/8	S76AFC316001	1.17	0.39	0.63	0.54	0.12	9/16	1/2	0.91	1/8	30	0.09
1/4 x 1/8	S76AFC002001	1.22	0.39	0.70	0.60	0.19	9/16	9/16	0.93	1/8	100	0.09
1/4 x 1/4	S76AFC002002	1.40	0.59	0.70	0.60	0.19	3/4	9/16	1.11	1/4	60	0.09
1/4 x 3/8	S76AFC002003	1.47	0.59	0.70	0.60	0.19	7/8	9/16	1.18	3/8	40	0.1
1/4 x 1/2	S76AFC002004	1.66	0.78	0.70	0.60	0.19	1-1/16	9/16	1.37	1/2	20	0.1
5/16 x 1/8	S76AFC516001	1.26	0.41	0.73	0.64	0.25	9/16	5/8	0.97	1/8	100	0.1
5/16 x 1/4	S76AFC516002	1.44	0.59	0.73	0.64	0.25	3/4	5/8	1.15	1/4	60	0.1
3/8 x 1/8	S76AFC003001	1.29	0.41	0.76	0.66	0.28	5/8	11/16	1.00	1/8	40	0.1
3/8 x 1/4	S76AFC003002	1.47	0.59	0.76	0.66	0.28	3/4	11/16	1.18	1/4	40	0.1
3/8 x 3/8	S76AFC003003	1.53	0.59	0.76	0.66	0.28	7/8	11/16	1.24	3/8	30	0.1
3/8 x 1/2	S76AFC003004	1.72	0.78	0.76	0.66	0.28	1-1/16	11/16	1.48	1/2	20	0.1
1/2 x 1/4	S76AFC004002	1.58	0.59	0.86	0.90	0.41	13/16	7/8	1.18	1/4	30	0.1
1/2 x 3/8	S76AFC004003	1.64	0.59	0.86	0.90	0.41	7/8	7/8	1.24	3/8	20	0.1
1/2 x 1/2	S76AFC004004	1.83	0.78	0.86	0.90	0.41	1-1/16	7/8	1.43	1/2	10	0.2
1/2 x 3/4	S76AFC004006	1.90	0.81	0.86	0.90	0.41	1-5/16	7/8	1.50	3/4	10	0.3
5/8 x 3/8	S76AFC005003	1.65	0.59	0.86	0.96	0.50	15/16	1.00	1.25	3/8	15	0.3
5/8 x 1/2	S76AFC005004	1.84	0.78	0.86	0.96	0.50	1-1/16	1.00	1.44	1/2	15	0.4
3/4 x 1/2	S76AFC006004	1.83	0.78	0.86	0.96	0.62	1-1/16	1-1/8	1.43	1/2	10	0.5
3/4 x 3/4	S76AFC006006	1.91	0.81	0.86	0.96	0.62	1-5/16	1-1/8	1.49	3/4	10	0.6
1 x 3/4	S76AFC010006	2.09	0.81	1.04	1.23	0.88	1-3/8	1-1/2	1.61	3/4	10	0.5
1 x 1	S76AFC010010	2.44	1.00	1.04	1.23	0.88	1-5/8	1-1/2	1.96	1	10	0.6

Fig. SFC – Female Connector Single Ferrule

Tube OD x NPT in	Part Number	A in	B in	C in	D in	E in	F in	G in	H in	I in	Packing	Weight lb
1/8 x 1/4	S76SFC001002	1.31	0.59	0.60	0.50	0.09	3/4	7/16	1.05	1/4	30	0.09
1/4 x 1/8	S76SFC002001	1.22	0.39	0.70	0.60	0.19	9/16	9/16	0.93	1/8	100	0.09
1/4 x 1/4	S76SFC002002	1.40	0.59	0.70	0.60	0.19	3/4	9/16	1.11	1/4	60	0.09
1/4 x 3/8	S76SFC002003	1.47	0.59	0.70	0.60	0.19	7/8	9/16	1.18	3/8	40	0.1
1/4 x 1/2	S76SFC002004	1.66	0.78	0.70	0.60	0.19	1-1/16	9/16	1.37	1/2	20	0.1
3/8 x 1/4	S76SFC003002	1.47	0.59	0.76	0.66	0.28	3/4	11/16	1.18	1/4	40	0.1
3/8 x 3/8	S76SFC003003	1.53	0.59	0.76	0.66	0.28	7/8	11/16	1.24	3/8	30	0.1
3/8 x 1/2	S76SFC003004	1.72	0.78	0.76	0.66	0.28	1-1/16	11/16	1.48	1/2	20	0.1
1/2 x 1/4	S76SFC004002	1.58	0.59	0.86	0.90	0.41	13/16	7/8	1.18	1/4	30	0.1
1/2 x 3/8	S76SFC004003	1.64	0.59	0.86	0.90	0.41	7/8	7/8	1.24	3/8	20	0.1
1/2 x 1/2	S76SFC004004	1.83	0.78	0.86	0.90	0.41	1-1/16	7/8	1.43	1/2	10	0.2
1/2 x 3/4	S76SFC004006	1.90	0.81	0.86	0.90	0.41	1-5/16	7/8	1.50	3/4	10	0.3
3/4 x 1/2	S76SFC006004	1.83	0.78	0.86	0.96	0.62	1-1/16	1-1/8	1.43	1/2	10	0.5
3/4 x 3/4	S76SFC006006	1.91	0.81	0.86	0.96	0.62	1-5/16	1-1/8	1.49	3/4	10	0.6
1 x 1	S76SFC010010	2.44	1.00	1.04	1.23	0.88	1-5/8	1-1/2	1.96	1	10	0.6

Please see complete installation instructions at www.smithcooper.com for important guidelines and limitations on the use and applications of SCI compression fittings and instrumentation tubing.



Fig. AME – Male Elbow Double Ferrule

Tube OD x NPT in	Part Number	A in	B in	C in	D in	E in	F in	G in	H in	I in	Packing	Weight lb
1/8 x 1/8	S76AME001001	0.92	0.38	0.60	0.50	0.09	7/16	7/16	0.66	1/8	50	0.06
1/8 x 1/4	S76AME001002	0.96	0.56	0.60	0.50	0.09	1/2	7/16	0.70	1/4	40	0.07
3/16 x 1/8	S76AME316001	1.00	0.38	0.63	0.54	0.12	1/2	1/2	0.74	1/8	40	0.08
1/4 x 1/8	S76AME002001	1.05	0.38	0.70	0.60	0.19	1/2	9/16	0.76	1/8	40	0.1
1/4 x 1/4	S76AME002002	1.05	0.56	0.70	0.60	0.19	1/2	9/16	0.76	1/4	30	0.1
1/4 x 3/8	S76AME002003	1.16	0.56	0.70	0.60	0.19	11/16	9/16	0.87	3/8	20	0.1
1/4 x 1/2	S76AME002004	1.24	0.75	0.70	0.60	0.19	13/16	9/16	0.95	1/2	20	0.1
5/16 x 1/4	S76AME516002	1.12	0.56	0.73	0.64	0.25	9/16	5/8	0.84	1/4	40	0.1
3/8 x 1/8	S76AME003001	1.20	0.38	0.76	0.66	0.19	5/8	11/16	0.91	1/8	40	0.1
3/8 x 1/4	S76AME003002	1.19	0.56	0.76	0.66	0.28	5/8	11/16	0.90	1/4	30	0.1
3/8 x 3/8	S76AME003003	1.22	0.56	0.76	0.66	0.28	11/16	11/16	0.93	3/8	20	0.2
3/8 x 1/2	S76AME003004	1.30	0.75	0.76	0.66	0.28	13/16	11/16	1.01	1/2	10	0.2
1/2 x 1/4	S76AME004002	1.41	0.56	0.86	0.90	0.28	13/16	7/8	1.01	1/4	10	0.2
1/2 x 3/8	S76AME004003	1.41	0.56	0.86	0.90	0.38	13/16	7/8	1.01	3/8	10	0.2
1/2 x 1/2	S76AME004004	1.41	0.75	0.86	0.90	0.41	13/16	7/8	1.01	1/2	10	0.3
5/8 x 3/8	S76AME005003	1.50	0.56	0.86	0.96	0.38	15/16	1	1.10	3/8	15	0.4
5/8 x 1/2	S76AME005004	1.49	0.75	0.86	0.96	0.47	15/16	1	1.09	1/2	15	0.4
3/4 x 1/2	S76AME006004	1.56	0.75	0.86	0.96	0.47	1-1/16	1-1/8	1.16	1/2	10	0.7
3/4 x 3/4	S76AME006006	1.56	0.75	0.86	0.96	0.62	1-1/16	1-1/8	1.16	3/4	10	0.8
1 x 3/4	S76AME010006	1.92	0.75	1.04	1.23	0.62	1-3/8	1-1/2	1.44	3/4	5	1.0
1 x 1	S76AME010010	1.92	0.75	1.04	1.23	0.88	1-3/8	1-1/2	1.44	1	5	1.0

Fig. SME – Male Elbow Single Ferrule

Tube OD x NPT in	Part Number	A in	B in	C in	D in	E in	F in	G in	H in	I in	Packing	Weight lb
1/8 x 1/8	S76SME001001	0.92	0.38	0.60	0.50	0.09	7/16	7/16	0.66	1/8	50	0.06
1/8 x 1/4	S76SME001002	0.96	0.56	0.60	0.50	0.09	1/2	7/16	0.70	1/4	40	0.07
1/4 x 1/8	S76SME002001	1.05	0.38	0.70	0.60	0.19	1/2	9/16	0.76	1/8	40	0.1
1/4 x 1/4	S76SME002002	1.05	0.56	0.70	0.60	0.19	1/2	9/16	0.76	1/4	30	0.1
1/4 x 3/8	S76SME002003	1.16	0.56	0.70	0.60	0.19	11/16	9/16	0.87	3/8	20	0.1
5/16 x 1/4	S76SME516002	1.12	0.56	0.73	0.64	0.25	9/16	5/8	0.84	1/4	40	0.1
3/8 x 1/8	S76SME003001	1.20	0.38	0.76	0.66	0.19	5/8	11/16	0.91	1/8	40	0.1
3/8 x 1/4	S76SME003002	1.19	0.56	0.76	0.66	0.28	5/8	11/16	0.90	1/4	30	0.1
3/8 x 3/8	S76SME003003	1.22	0.56	0.76	0.66	0.28	11/16	11/16	0.93	3/8	20	0.2
3/8 x 1/2	S76SME003004	1.30	0.75	0.76	0.66	0.28	13/16	11/16	1.01	1/2	10	0.2
1/2 x 1/4	S76SME004002	1.41	0.56	0.86	0.90	0.28	13/16	7/8	1.01	1/4	10	0.2
1/2 x 3/8	S76SME004003	1.41	0.56	0.86	0.90	0.38	13/16	7/8	1.01	3/8	10	0.2
1/2 x 1/2	S76SME004004	1.41	0.75	0.86	0.90	0.41	13/16	7/8	1.01	1/2	10	0.3
3/4 x 1/2	S76SME006004	1.56	0.75	0.86	0.96	0.47	1-1/16	1-1/8	1.16	1/2	10	0.7
3/4 x 3/4	S76SME006006	1.56	0.75	0.86	0.96	0.62	1-1/16	1-1/8	1.16	3/4	10	0.8
1 x 3/4	S76SME010006	1.92	0.75	1.04	1.23	0.62	1-3/8	1-1/2	1.44	3/4	5	1.0
1 x 1	S76SME010010	1.92	0.75	1.04	1.23	0.88	1-3/8	1-1/2	1.44	1	5	1.0

Please see complete installation instructions at www.smithcooper.com for important guidelines and limitations on the use and applications of SCI compression fittings and instrumentation tubing.

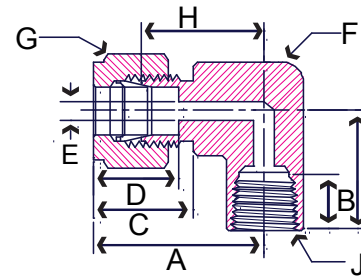


Fig. AFE – Female Elbow Double Ferrule

Tube OD x NPT in	Part Number	A in	B in	C in	D in	E in	F in	G in	H in	I in	J in	Packing	Weight lb
1/8 x 1/8	S76AFE001001	0.96	0.41	0.60	0.50	0.09	1/2	7/16	0.71	0.74	1/8	40	0.09
1/8 x 1/4	S76AFE001002	1.07	0.59	0.60	0.50	0.09	11/16	7/16	0.81	0.87	1/4	30	0.1
3/16 x 1/8	S76AFE316001	1.00	0.41	0.63	0.54	0.12	1/2	1/2	0.74	0.75	1/8	40	0.1
3/16 x 1/4	S76AFE316002	1.10	0.59	0.63	0.54	0.12	3/4	1/2	0.81	0.88	1/4	30	0.1
1/4 x 1/8	S76AFE002001	1.05	0.41	0.70	0.60	0.19	1/2	9/16	0.76	0.74	1/8	40	0.1
1/4 x 1/4	S76AFE002002	1.16	0.59	0.70	0.60	0.19	11/16	9/16	0.87	0.87	1/4	30	0.2
1/4 x 3/8	S76AFE002003	1.24	0.59	0.70	0.60	0.19	13/16	9/16	0.95	0.87	3/8	30	0.3
1/4 x 1/2	S76AFE002004	1.35	0.78	0.70	0.60	0.19	1	9/16	1.06	1.11	1/2	20	0.4
5/16 x 1/4	S76AFE516002	1.19	0.59	0.73	0.64	0.25	11/16	5/8	0.90	0.87	1/4	30	0.3
3/8 x 1/8	S76AFE003001	1.20	0.41	0.76	0.66	0.28	5/8	11/16	0.91	0.75	1/8	30	0.2
3/8 x 1/4	S76AFE003002	1.22	0.59	0.76	0.66	0.28	11/16	11/16	0.93	0.87	1/4	30	0.3
3/8 x 3/8	S76AFE003003	1.30	0.59	0.76	0.66	0.28	13/16	11/16	1.01	0.87	3/8	20	0.3
3/8 x 1/2	S76AFE003004	1.41	0.78	0.76	0.66	0.28	1	11/16	1.12	1.11	1/2	20	0.3
1/2 x 1/4	S76AFE004002	1.41	0.59	0.86	0.90	0.41	13/16	7/8	1.01	0.87	1/4	10	0.3
1/2 x 3/8	S76AFE004003	1.41	0.59	0.86	0.90	0.41	13/16	7/8	1.01	0.87	3/8	10	0.4
1/2 x 1/2	S76AFE004004	1.52	0.78	0.86	0.90	0.41	1	7/8	1.12	1.11	1/2	10	0.5
5/8 x 3/8	S76AFE005003	1.50	0.59	0.86	0.96	0.50	15/16	1	1.10	0.88	3/8	15	0.4
5/8 x 1/2	S76AFE005004	1.52	0.78	0.86	0.96	0.50	1-1/16	1	1.16	1.11	1/2	15	0.5
3/4 x 1/2	S76AFE006004	1.56	0.78	0.86	0.96	0.62	1-1/16	1-1/8	1.16	1.11	1/2	10	0.6
3/4 x 3/4	S76AFE006006	1.75	0.81	0.86	0.96	0.62	1-3/8	1-1/8	1.35	1.24	3/4	10	0.8
3/4 x 1	S76AFE006010	1.93	1.00	0.86	0.96	0.62	1-5/8	1-1/8	1.53	1.50	1	10	1.1
1 x 1	S76AFE010010	2.10	1.00	1.04	1.23	0.88	1-11/16	1-1/2	1.62	1.49	1	10	0.9

Fig. SFE – Female Elbow Single Ferrule

Tube OD x NPT in	Part Number	A in	B in	C in	D in	E in	F in	G in	H in	I in	J in	Packing	Weight lb
1/4 x 1/4	S76SFE002002	1.16	0.59	0.70	0.60	0.19	11/16	9/16	0.87	0.87	1/4	30	0.2
3/8 x 1/4	S76SFE003002	1.22	0.59	0.76	0.66	0.28	11/16	11/16	0.93	0.87	1/4	30	0.3
3/8 x 3/8	S76SFE003003	1.30	0.59	0.76	0.66	0.28	13/16	11/16	1.01	0.87	3/8	20	0.3
1/2 x 1/2	S76SFE004004	1.52	0.78	0.86	0.90	0.41	1	7/8	1.12	1.11	1/2	10	0.5
3/4 x 1/2	S76SFE006004	1.56	0.78	0.86	0.96	0.62	1-1/16	1-1/8	1.16	1.11	1/2	10	0.6



SCI Pro Pak System

Please see complete installation instructions at www.smithcooper.com for important guidelines and limitations on the use and applications of SCI compression fittings and instrumentation tubing.

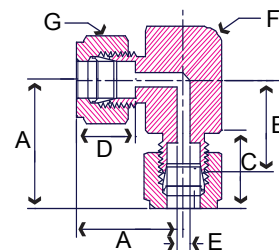


Fig. AUE – Union Elbow Double Ferrule

Tube OD in	Part Number	A in	B in	C in	D in	E in	F in	G in	Packing	Weight lb
1/8	S76AUE001	0.87	0.61	0.43	0.34	0.05	3/8	5/16	50	0.1
3/16	S76AUE316	1.00	0.74	0.63	0.54	0.12	1/2	1/2	50	0.1
1/4	S76AUE002	1.05	0.76	0.70	0.60	0.19	1/2	9/16	40	0.1
5/16	S76AUE516	1.12	0.83	0.73	0.64	0.25	9/16	5/8	30	0.2
3/8	S76AUE003	1.19	0.90	0.76	0.66	0.28	5/8	11/16	30	0.3
1/2	S76AUE004	1.41	1.01	0.86	0.90	0.41	13/16	7/8	20	0.3
5/8	S76AUE005	1.49	1.09	0.86	0.96	0.50	15/16	1	20	0.4
3/4	S76AUE006	1.56	1.16	0.86	0.96	0.62	1-1/16	1-1/8	10	0.4
1	S76AUE010	1.92	1.44	1.04	1.23	0.88	1-3/8	1-1/2	10	0.4

Fig. SUE – Union Elbow Single Ferrule

Tube OD in	Part Number	A in	B in	C in	D in	E in	F in	G in	Packing	Weight lb
1/4	S76SUE002	1.05	0.76	0.70	0.60	0.19	1/2	9/16	40	0.1
3/8	S76SUE003	1.19	0.90	0.76	0.66	0.28	5/8	11/16	30	0.3
1/2	S76SUE004	1.41	1.01	0.86	0.90	0.41	13/16	7/8	20	0.3
5/8	S76SUE005	1.49	1.09	0.86	0.96	0.50	15/16	1	20	0.4
3/4	S76SUE006	1.56	1.16	0.86	0.96	0.62	1-1/16	1-1/8	10	0.4
1	S76SUE010	1.92	1.44	1.04	1.23	0.88	1-3/8	1-1/2	10	0.4

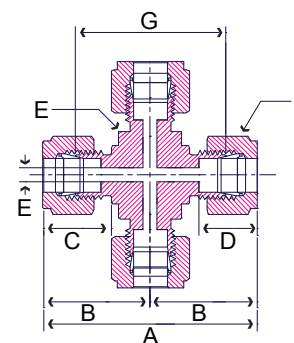


Fig. AUC – Union Cross Double Ferrule

Tube OD in	Part Number	A in	B in	C in	D in	E in	F in	G in	Packing	Weight lb
1/8	S76AUCR001	1.74	0.87	0.60	0.50	3/8	7/16	1.22	40	0.2
1/4	S76AUCR002	2.10	1.05	0.70	0.60	1/2	9/16	1.52	20	0.2
5/16	S76AUCR516	2.32	1.16	0.73	0.64	5/8	5/8	1.74	20	0.4
3/8	S76AUCR003	2.38	1.19	0.76	0.66	5/8	11/16	1.80	20	0.4
1/2	S76AUCR004	2.82	1.41	0.86	0.41	13/16	7/8	2.02	4	0.5
5/8	S76AUCR005	3.04	1.52	0.86	0.96	15/16	1.00	2.26	10	0.9
3/4	S76AUCR006	3.12	1.56	0.86	0.96	1-1/16	1-1/8	2.34	2	1.3
1	S76AUCR010	3.85	1.92	1.05	1.23	1-3/8	1-1/2	2.90	2	1.3

Fig. SUC – Union Cross Single Ferrule

Tube OD in	Part Number	A in	B in	C in	D in	E in	F in	G in	Packing	Weight lb
1/2	S76SUCR004	2.82	1.41	0.86	0.41	13/16	7/8	2.02	4	0.5

Please see complete installation instructions at www.smithcooper.com for important guidelines and limitations on the use and applications of SCI compression fittings and instrumentation tubing.

Series S76BVH & S76SBVH
316 Stainless Steel Instrumentation Ball Valve

- 1000 psi @ 200° F
- PTFE seats
- Double ferrule instrumentation tube ends - S76BVH
- Single ferrule instrumentation tube ends - S76SBVH



Tube OD in	Part Number		Packing		Weight lb
	Double Ferrule	Single Ferrule	Inner	Master	
1/4	S76BVH002	S76SBVH002	1	10	0.4
3/8	S76BVH003	S76SBVH003	1	10	0.4
1/2	S76BVH004	S76SBVH004	1	10	0.7
3/4	S76BVH006	S76SBVH006	1	10	1.0
1	S76BVH010	S76SBVH010	1	10	1.6

Series S76BVH6
316 Stainless Steel Instrumentation Ball Valve

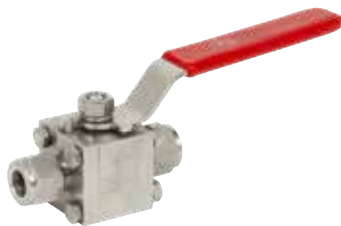
- 6000 psi @ 200° F
- PTFE seats
- Double ferrule instrumentation tube ends



Tube OD in	Part Number	Packing		Weight lb
	Instrumentation	Inner	Master	
1/4	S76BVH6002	1	10	0.4
3/8	S76BVH6003	1	10	0.4
1/2	S76BVH6004	1	10	0.7
3/4	S76BVH6006	1	10	1.0
1	S76BVH6010	1	10	1.6

Series S76BVH3
316 Stainless Steel Instrumentation Ball Valve

- 3000 psi @ 200° F
- PTFE seats
- Double ferrule instrumentation tube ends



Tube OD in	Part Number	Packing		Weight lb
	Instrumentation	Inner	Master	
1/4	S76BVH3002	1	10	0.6
3/8	S76BVH3003	1	10	0.7
1/2	S76BVH3004	1	10	0.8
3/4	S76BVH3006	1	10	1.6
1	S76BVH3010	1	10	2.5

Series S76PCV3 & S76SPCV3
316 Stainless Steel Instrumentation Check Valve

- 3000 psi @ 200° F
- Cracking Pressure 7 psi
- PTFE seats
- Double ferrule instrumentation tube ends - S76PCV3
- Single ferrule instrumentation tube ends - S76SPCV3



Tube OD in	Part Number		Packing		Weight lb
	Double Ferrule	Single Ferrule	Inner	Master	
1/4	S76PCV3002	S76SPCV3002	1	10	0.3
3/8	S76PCV3003	S76SPCV3003	1	10	0.3
1/2	S76PCV3004	S76SPCV3004	1	10	0.5
3/4	S76PCV3006	S76SPCV3006	1	10	0.6
1	S76PCV3010	S76SPCV3010	1	10	1.5

Series S7166NV
316 Stainless Steel Needle Valve

- 6000 lb. CWP
- Straight pattern
- NPT threaded ends
- 0°F to 450°F



Size in	Part Number	Weight lb
	Threaded	
1/4	S7166NV002	1.0
3/8	S7166NV003	1.1
1/2	S7166NV004	1.6
3/4	S7166NV006	1.9
1	S7166NV010	3.1



Order On-Line
at www.smithcooper.com


Fig. S64ST4 & S64ST6 – Seamless Instrumentation Tubing

Tube OD in	Wall Thickness in	Part Number		ID in	Tube Length ft	Weight lb / ft
		304/L	316/L			
1/8	0.035	S64ST4035001	S64ST6035001	0.055	20	0.03
1/8	0.049	S64ST4049001	S64ST6049001	0.027	20	0.04
1/4	0.028	S64ST4028002	S64ST6028002	0.194	20	0.06
1/4	0.035	S64ST4035002	S64ST6035002	0.180	20	0.08
1/4	0.049	S64ST4049002	S64ST6049002	0.152	20	0.1
1/4	0.065	S64ST4065002	S64ST6065002	0.120	20	0.1
1/4	0.083	S64ST4083002	S64ST6083002	0.084	20	0.1
5/16	0.035	S64ST4035516	S64ST6035516	0.243	20	0.1
3/8	0.035	S64ST4035003	S64ST6035003	0.305	20	0.1
3/8	0.049	S64ST4049003	S64ST6049003	0.277	20	0.1
3/8	0.065	S64ST4065003	S64ST6065003	0.245	20	0.2
3/8	0.083	S64ST4083003	S64ST6083003	0.209	20	0.2
1/2	0.035	S64ST4035004	S64ST6035004	0.430	20	0.1
1/2	0.049	S64ST4049004	S64ST6049004	0.402	20	0.2
1/2	0.065	S64ST4065004	S64ST6065004	0.370	20	0.3
1/2	0.083	S64ST4083004	S64ST6083004	0.334	20	0.4
1/2	0.120	S64ST4120004	S64ST6120004	0.260	20	0.5
5/8	0.035	S64ST4035005	S64ST6035005	0.555	20	0.2
5/8	0.049	S64ST4049005	S64ST6049005	0.527	20	0.3
5/8	0.065	S64ST4065005	S64ST6065005	0.495	20	0.3
5/8	0.083	S64ST4083005	S64ST6083005	0.509	20	0.5
3/4	0.035	S64ST4035006	S64ST6035006	0.680	20	0.2
3/4	0.049	S64ST4049006	S64ST6049006	0.652	20	0.3
3/4	0.065	S64ST4065006	S64ST6065006	0.620	20	0.4
3/4	0.083	S64ST4083006	S64ST6083006	0.584	20	0.6
3/4	0.095	S64ST4095006	S64ST6095006	0.560	20	0.7
1	0.035	S64ST4035010	S64ST6035010	0.930	20	0.3
1	0.049	S64ST4049010	S64ST6049010	0.902	20	0.4
1	0.065	S64ST4065010	S64ST6065010	0.870	20	0.6
1	0.083	S64ST4083010	S64ST6083010	0.834	20	0.8
1	0.095	S64ST4095010	S64ST6095010	0.810	20	0.9
1	0.120	S64ST4120010	S64ST6120010	0.760	20	1.1
1-1/4	0.065	S64ST4065012	S64ST6065012	1.120	20	0.8

Please see complete installation instructions at www.smithcooper.com for important guidelines and limitations on the use and applications of SCI compression fittings and instrumentation tubing.