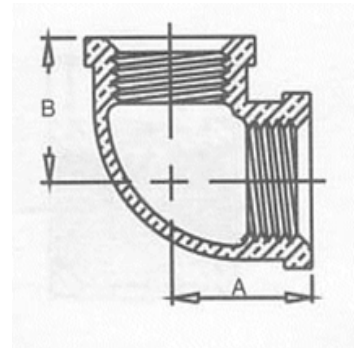


DIMENSIONAL SPECIFICATIONS

LEADED IMPORT CROME PLATED FITTINGS**

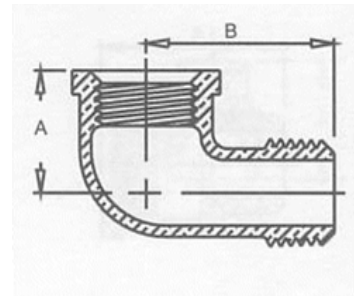
90 DEGREE ELBOW

Part #	Size (IN.)	Approx. Net WT. (LB.)	A	B
C101-02	1/8	0.05	0.54	0.54
C101-04	1/4	0.10	0.71	0.71
C101-06	3/8	0.15	0.82	0.82
C101-08	1/2	0.20	1.01	1.01
C101-12	3/4	0.30	1.18	1.18
C101-16	1	0.60	1.43	1.43
C101-20	1-1/4	0.95	1.69	1.69
C101-24	1-1/2	1.15	1.84	1.84
C101-32	2	1.95	2.12	2.12
C101-64	4	8.90	3.79	3.79



90 DEGREE STREET ELBOW

Part #	Size (IN.)	Approx. Net WT. (LB.)	A	B
C103-02	1/8	0.05	0.55	0.92
C103-04	1/4	0.10	0.72	1.11
C103-06	3/8	0.15	0.83	1.24
C103-08	1/2	0.20	1.03	1.51
C103-12	3/4	0.35	1.19	1.66
C103-16	1	0.50	1.43	1.98
C103-20	1-1/4	0.85	1.71	2.26
C103-24	1-1/2	1.15	1.87	2.46
C103-32	2	1.65	2.14	2.98



**WARNING: This product contains chemicals known to the state of California to cause cancer and birth defects or other reproductive harm.

**NOTE: This product is not for use in potable water applications and contains a chemical known to cause birth defects or reproductive harm.

MERIT BRASS

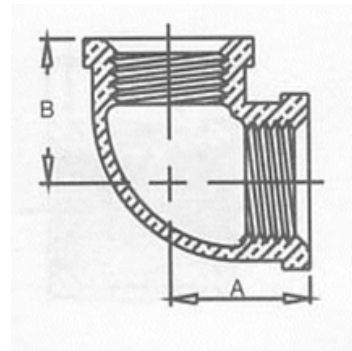
DIRECTING THE FLOW OF *Quality*

DIMENSIONAL SPECIFICATIONS

LEADED IMPORT CROME PLATED FITTINGS**

90 DEGREE REDUCING ELBOW

Part #	Size (IN.)	Approx. Net WT. (LB.)	A	B
C101-0402	1/4 X 1/8	0.10	0.65	0.60
C101-0604	3/8 X 1/4	0.10	0.75	0.75
C101-0804	1/2 X 1/4	0.20	1.78	1.69
C101-0806	1/2 X 3/8	0.20	0.93	0.90
C101-1206	3/4 X 3/8	0.25	0.97	0.97
C101-1208	3/4 X 1/2	0.45	1.08	1.11
C101-1608	1 X 1/2	0.45	1.20	1.24
C101-1612	1 X 3/4	0.50	1.30	1.31
C101-2012	1-1/4 X 3/4	0.70	1.39	1.48
C101-2016	1-1/4 X 1	0.85	1.52	1.60
C101-3224	2 X 1-1/2	1.60	1.89	2.07



90 DEGREE DROP EAR ELBOW

Part #	Size (IN.)	Approx. Net WT. (LB.)	A	B
C104-08	1/2	0.35		



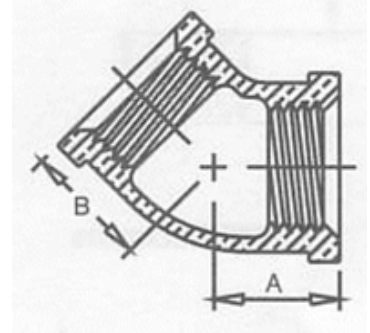
**WARNING: This product contains chemicals known to the state of California to cause cancer and birth defects or other reproductive harm.
 **NOTE: This product is not for use in potable water applications and contains a chemical known to cause birth defects or reproductive harm.

DIMENSIONAL SPECIFICATIONS

LEADED IMPORT CROME PLATED FITTINGS**

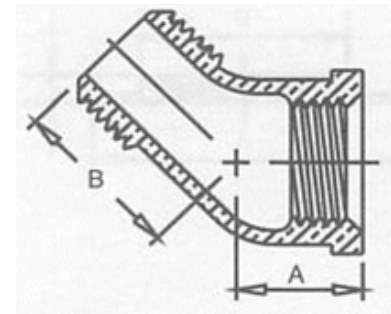
45 DEGREE ELBOW

Part #	Size (IN.)	Approx. Net WT. (LB.)	A	B
C102-02	1/8	0.05	0.43	0.43
C102-04	1/4	0.10	0.55	0.55
C102-06	3/8	0.15	0.63	0.63
C102-08	1/2	0.20	0.79	0.79
C102-12	3/4	0.30	0.91	0.91
C102-16	1	0.50	1.07	1.07
C102-20	1-1/4	0.75	1.23	1.23
C102-24	1-1/2	0.95	1.31	1.31
C102-32	2	1.70	1.47	1.47



45 DEGREE STREET ELBOW

Part #	Size (IN.)	Approx. Net WT. (LB.)	A	B
C103A-02	1/8	0.05	0.56	0.88
C103A-04	1/4	0.15	0.63	0.92
C103A-06	3/8	0.20	0.78	1.06
C103A-08	1/2	0.20	0.89	1.23
C103A-12	3/4	0.30	1.06	1.40
C103A-16	1	0.45	1.22	1.64
C103A-24	1-1/2	0.95	1.30	1.80



****WARNING:** This product contains chemicals known to the state of California to cause cancer and birth defects or other reproductive harm.
****NOTE:** This product is not for use in potable water applications and contains a chemical known to cause birth defects or reproductive harm.

MERIT BRASS

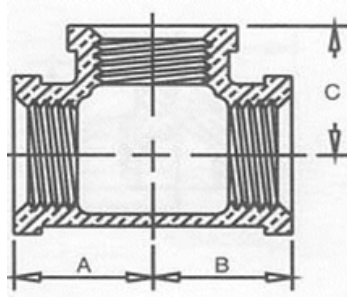
DIRECTING THE FLOW OF *Quality*

DIMENSIONAL SPECIFICATIONS

LEADED IMPORT CROME PLATED FITTINGS**

TEE

Part #	Size (IN.)	Approx. Net WT. (LB.)	A	B	C
C106-02	1/8	0.05	0.54	0.54	0.54
C106-04	1/4	0.15	0.71	0.71	0.71
C106-06	3/8	0.20	0.82	0.82	0.82
C106-08	1/2	0.30	1.01	1.01	1.01
C106-12	3/4	0.50	1.18	1.18	1.18
C106-16	1	0.80	1.43	1.43	1.43
C106-20	1-1/4	1.15	1.69	1.69	1.69
C106-24	1-1/2	1.50	1.84	1.84	1.84
C106-32	2	2.25	2.12	2.12	2.12



**WARNING: This product contains chemicals known to the state of California to cause cancer and birth defects or other reproductive harm.
**NOTE: This product is not for use in potable water applications and contains a chemical known to cause birth defects or reproductive harm.

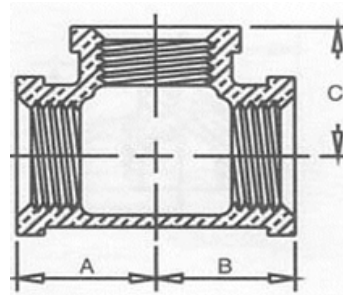
MERIT
BRASS
DIRECTING THE FLOW OF *Quality*

DIMENSIONAL SPECIFICATIONS

LEADED IMPORT CROME PLATED FITTINGS**

REDUCING TEE

Part #	Size (IN.)	Approx. Net WT. (LB.)	A	B	C
C106-060602	3/8 X 3/8 X 1/8	0.15			
C106-060604	3/8 X 3/8 X 1/4	0.15	0.75	0.75	0.78
C106-060608	3/8 X 3/8 X 1/2	0.25	0.90	0.90	0.93
C106-080608	1/2 X 3/8 X 1/2	0.25	1.01	0.90	1.01
C106-080804	1/2 X 1/2 X 1/4	0.25			
C106-080806	1/2 X 1/2 X 3/8	0.25	0.93	0.93	0.90
C106-080812	1/2 X 1/2 X 3/4	0.40	1.11	1.11	1.08
C106-120808	3/4 X 1/2 X 1/2	0.35	1.08	1.01	1.11
C106-120812	3/4 X 1/2 X 3/4	0.40	1.18	1.11	1.18
C106-121204	3/4 X 3/4 X 1/4	0.35	1.00	1.00	1.00
C106-121206	3/4 X 3/4 X 3/8	0.40	1.00	1.00	1.00
C106-121208	3/4 X 3/4 X 1/2	0.40	1.08	1.08	1.11
C106-121216	3/4 X 3/4 X 1	0.60	1.31	1.31	1.30
C106-160812	1 X 1/2 X 3/4	0.60			
C106-160816	1 X 1/2 X 1	0.60	1.43	1.24	1.43
C106-161208	1 X 3/4 X 1/2	0.45	1.20	1.08	1.24
C106-161212	1 X 3/4 X 3/4	0.55	1.30	1.08	1.31



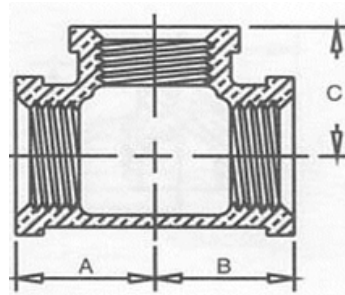
****WARNING:** This product contains chemicals known to the state of California to cause cancer and birth defects or other reproductive harm.
****NOTE:** This product is not for use in potable water applications and contains a chemical known to cause birth defects or reproductive harm.

DIMENSIONAL SPECIFICATIONS

LEADED IMPORT CROME PLATED FITTINGS**

REDUCING TEE CONTINUED

Part #	Size (IN.)	Approx. Net WT. (LB.)	A	B	C
C106-161216	1 X 3/4 X 1	0.65	1.43	1.31	1.43
C106-161606	1 X 1 X 3/8	0.55	1.12	1.12	1.13
C106-161608	1 X 1 X 1/2	0.60	1.20	1.20	1.24
C106-161612	1 X 1 X 3/4	0.70	1.30	1.30	1.31
C106-201616	1-1/4 X 1 X 1	0.90	1.52	1.43	1.60
C106-202008	1-1/4 X 1-1/4 X 1/2	0.85	1.29	1.29	1.41
C106-202012	1-1/4 X 1-1/4 X 3/4	0.85	1.39	1.39	1.48
C106-202016	1-1/4 X 1-1/4 X 1	1.05	1.52	1.52	1.60
C106-241616	1-1/2 X 1 X 1	1.10	1.63	1.50	1.81
C106-242408	1-1/2 X 1-1/2 X 1/2	1.05	1.32	1.32	1.53
C106-242412	1-1/2 X 1-1/2 X 3/4	1.10	1.42	1.42	1.60
C106-242416	1-1/2 X 1-1/2 X 1	1.30	1.55	1.55	1.72
C106-242420	1-1/2 X 1-1/2 X 1-1/4	1.45	1.72	1.72	1.81
C106-323212	2 X 2 X 3/4	1.65	1.47	1.47	1.84
C106-323216	2 X 2 X 1	1.75	1.59	1.59	1.95
C106-323224	2 X 2 X 1-1/2	2.10	1.89	1.89	2.07
C106-161216	1 X 3/4 X 1	0.65	1.43	1.31	1.43



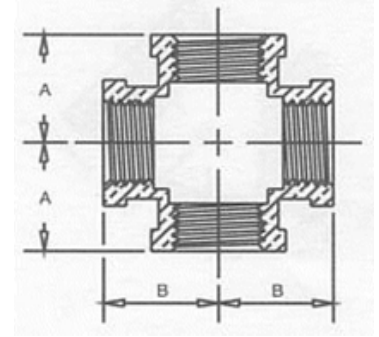
****WARNING:** This product contains chemicals known to the state of California to cause cancer and birth defects or other reproductive harm.
****NOTE:** This product is not for use in potable water applications and contains a chemical known to cause birth defects or reproductive harm.

DIMENSIONAL SPECIFICATIONS

LEADED IMPORT CROME PLATED FITTINGS**

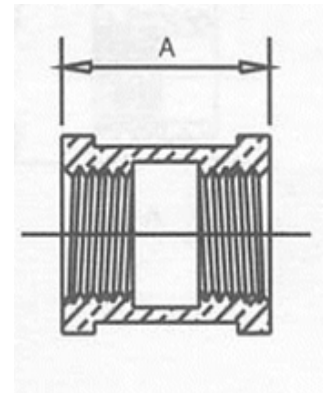
CROSS

Part #	Size (IN.)	Approx. Net WT. (LB.)	A	B
C110-02	1/8	0.10	0.54	0.54
C110-04	1/4	0.15	0.71	0.71
C110-06	3/8	0.25	0.82	0.82
C110-08	1/2	0.35	1.01	1.01
C110-12	3/4	0.55	1.18	1.18
C110-16	1	0.95	1.43	1.43
C110-20	1-1/4	1.40	1.69	1.69



COUPLING

Part #	Size (IN.)	Approx. Net WT. (LB.)	A
C111-02	1/8	0.03	0.80
C111-04	1/4	0.10	0.80
C111-06	3/8	0.15	1.05
C111-08	1/2	0.25	1.29
C111-12	3/4	0.30	1.43
C111-16	1	0.45	1.68
C111-20	1-1/4	0.65	1.86
C111-24	1-1/2	0.90	1.92
C111-32	2	1.35	2.20



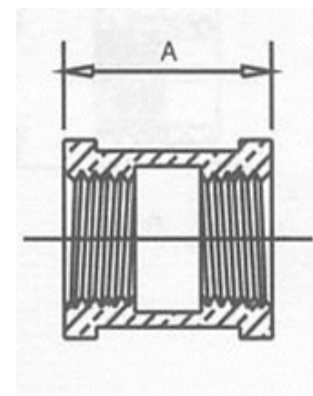
**WARNING: This product contains chemicals known to the state of California to cause cancer and birth defects or other reproductive harm.
 **NOTE: This product is not for use in potable water applications and contains a chemical known to cause birth defects or reproductive harm.

DIMENSIONAL SPECIFICATIONS

LEADED IMPORT CROME PLATED FITTINGS**

REDUCING COUPLING

Part #	Size (IN.)	Approx. Net WT. (LB.)	A
C112-0402	1/4 X 1/8	0.10	0.92
C112-0602	3/8 X 1/8	0.10	0.92
C112-0604	3/8 X 1/4	0.10	0.92
C112-0802	1/2 X 1/8	0.15	1.17
C112-0804	1/2 X 1/4	0.15	1.17
C112-0806	1/2 X 3/8	0.15	1.17
C112-1204	3/4 X 1/4	0.20	1.35
C112-1206	3/4 X 3/8	0.25	1.35
C112-1208	3/4 X 1/2	0.25	1.35
C112-1606	1 X 3/8	0.30	1.56
C112-1608	1 X 1/2	0.30	1.56
C112-1612	1 X 3/4	0.35	1.56
C112-2008	1-1/4 X 1/2	0.50	1.77
C112-2012	1-1/4 X 3/4	0.50	1.77
C112-2408	1-1/2 X 1/2	0.60	1.80
C112-2412	1-1/2 X 3/4	0.65	1.80
C112-2416	1-1/2 X 1	0.60	1.80
C112-2420	1-1/2 X 1-1/4	0.75	1.80
C112-3224	2 X 1-1/2	1.05	2.03



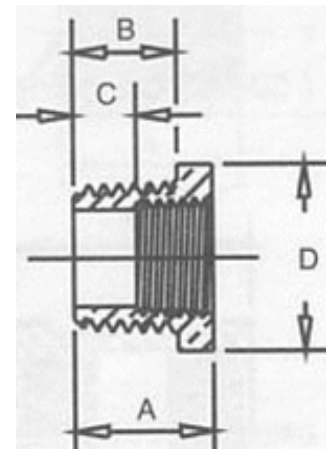
**WARNING: This product contains chemicals known to the state of California to cause cancer and birth defects or other reproductive harm.
 **NOTE: This product is not for use in potable water applications and contains a chemical known to cause birth defects or reproductive harm.

DIMENSIONAL SPECIFICATIONS

LEADED IMPORT CROME PLATED FITTINGS**

HEX BUSHING

Part #	Size (IN.)	Approx. Net WT. (LB.)	A	B	C	D
C114-0402	1/4 X 1/8	0.03				
C114-0602	3/8 X 1/8	0.05				
C114-0604	3/8 X 1/4	0.05				
C114-0802	1/2 X 1/8	0.10	0.75	0.56	0.50	0.88
C114-0804	1/2 X 1/4	0.10	0.75	0.56	0.43	0.88
C114-0806	1/2 X 3/8	0.05	0.75	0.56	0.34	0.88
C114-1204	3/4 X 1/4	0.20	0.85	0.63	0.53	1.16
C114-1206	3/4 X 3/8	0.20	0.85	0.63	0.49	1.16
C114-1208	3/4 X 1/2	0.10	0.85	0.63	0.32	1.16
C114-1604	1 X 1/4	0.25	1.05	0.75	0.73	1.44
C114-1608	1 X 1/2	0.25	1.00	0.75	0.57	1.13
C114-1612	1 X 3/4	0.25	1.00	0.75	0.50	1.13
C114-2008	1-1/4 X 1/2	0.40	1.14	0.80	0.71	1.34
C114-2012	1-1/4 X 3/4	0.40				
C114-2016	1-1/4 X 1	0.30	1.08	0.80	0.47	1.78
C114-2408	1-1/2 X 1/2	0.55				
C114-2416	1-1/2 X 1	0.45	1.14	0.83	0.56	2.00
C114-2420	1-1/2 X 1-1/4	0.35	1.14	0.83	0.43	2.00
C114-3216	2 X 1	0.90				
C114-3224	2 X 1-1/2	0.65	1.22	0.88	0.52	2.50



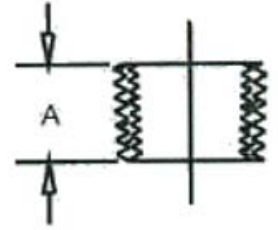
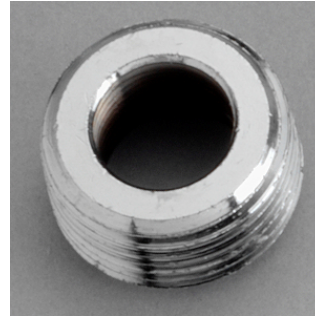
**WARNING: This product contains chemicals known to the state of California to cause cancer and birth defects or other reproductive harm.
 **NOTE: This product is not for use in potable water applications and contains a chemical known to cause birth defects or reproductive harm.

DIMENSIONAL SPECIFICATIONS

LEADED IMPORT CROME PLATED FITTINGS**

FACE BUSHING

Part #	Size (IN.)	Approx. Net WT. (LB.)	A	B
C115-0402	1/4 X 1/8	0.03	0.44	0.26
C115-0604	3/8 X 1/4	0.02	0.48	0.40
C115-0806	1/2 X 3/8	0.05	0.56	0.41
C115-1206	3/4 X 3/8	0.26	0.63	0.36
C115-1208	3/4 X 1/2	0.05	0.63	0.53



**WARNING: This product contains chemicals known to the state of California to cause cancer and birth defects or other reproductive harm.

**NOTE: This product is not for use in potable water applications and contains a chemical known to cause birth defects or reproductive harm.

**MERIT
BRASS**

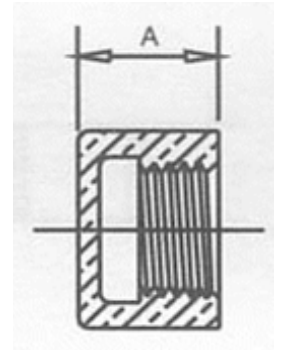
DIRECTING THE FLOW OF *Quality*

DIMENSIONAL SPECIFICATIONS

LEADED IMPORT CROME PLATED FITTINGS**

CAP

Part #	Size (IN.)	Approx. Net WT. (LB.)	A
C116-02	1/8	0.05	0.49
C116-04	1/4	0.05	0.59
C116-06	3/8	0.10	0.66
C116-08	1/2	0.15	0.78
C116-12	3/4	0.20	0.84
C116-16	1	0.30	1.00
C116-20	1-1/4	0.45	1.13
C116-24	1-1/2	0.65	1.16
C116-32	2	1.10	1.34



**WARNING: This product contains chemicals known to the state of California to cause cancer and birth defects or other reproductive harm.
**NOTE: This product is not for use in potable water applications and contains a chemical known to cause birth defects or reproductive harm.

MERIT
BRASS

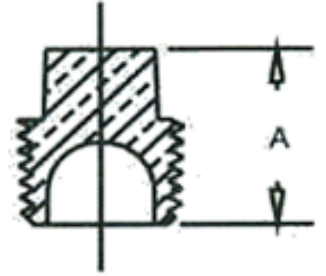
DIRECTING THE FLOW OF *Quality*

DIMENSIONAL SPECIFICATIONS

LEADED IMPORT CROME PLATED FITTINGS**

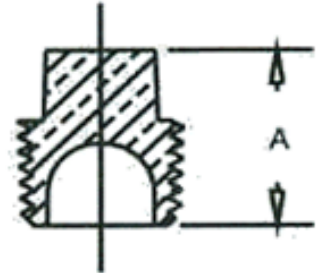
SQUARE HEAD CORED PLUG

Part #	Size (IN.)	Approx. Net WT. (LB.)	A
C117-08	1/2	0.05	0.92
C117-12	3/4	0.10	0.99
C117-16	1	0.25	1.19
C117-20	1-1/4	0.35	1.27
C117-24	1-1/2	0.45	1.35



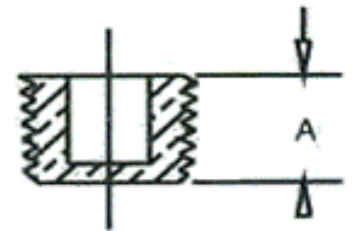
SQUARE HEAD SOLID PLUG

Part #	Size (IN.)	Approx. Net WT. (LB.)	A
C117A-02	1/8	0.03	0.51
C117A-04	1/4	0.05	0.69
C117A-06	3/8	0.05	0.72
C117A-08	1/2	0.12	0.92
C117A-12	3/4	0.18	0.99
C117A-16	1	0.35	1.19



SQUARE COUNTERSUNK PLUG

Part #	Size (IN.)	Approx. Net WT. (LB.)	A
C118-12	3/4	0.10	0.55



**WARNING: This product contains chemicals known to the state of California to cause cancer and birth defects or other reproductive harm.
**NOTE: This product is not for use in potable water applications and contains a chemical known to cause birth defects or reproductive harm.

**MERIT
BRASS**

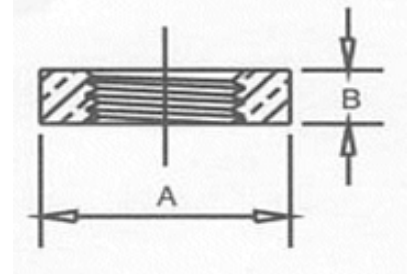
DIRECTING THE FLOW OF *Quality*

DIMENSIONAL SPECIFICATIONS

LEADED IMPORT CROME PLATED FITTINGS**

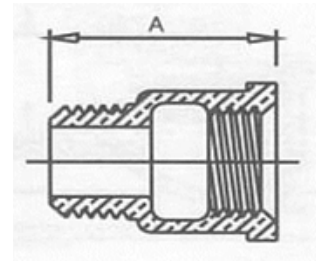
HEX LOCKNUT

Part #	Size (IN.)	Approx. Net WT. (LB.)	A	B
C119-02	1/8	0.02	0.88	0.25
C119-04	1/4	0.03	0.88	0.25
C119-06	3/8	0.05	1.00	0.28
C119-08	1/2	0.10	1.28	0.31
C119-12	3/4	0.10	1.50	0.28
C119-16	1	0.15	1.75	0.34



EXTENSION PIECE

Part #	Size (IN.)	Approx. Net WT. (LB.)	A
C232-08	1/2	0.20	1.47



**WARNING: This product contains chemicals known to the state of California to cause cancer and birth defects or other reproductive harm.
**NOTE: This product is not for use in potable water applications and contains a chemical known to cause birth defects or reproductive harm.

**MERIT
BRASS**

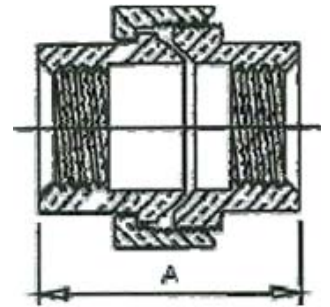
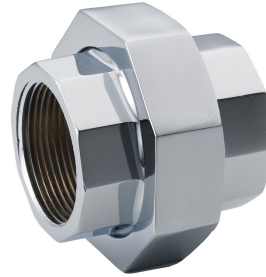
DIRECTING THE FLOW OF *Quality*

DIMENSIONAL SPECIFICATIONS

LEADED IMPORT CROME PLATED FITTINGS**

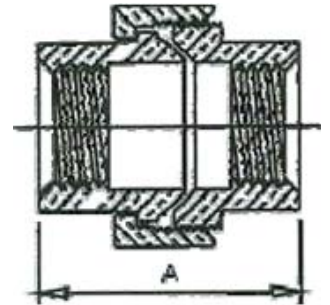
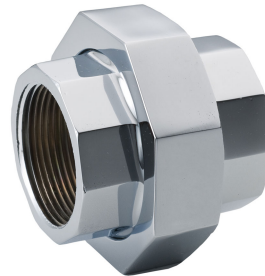
UNION

Part #	Size (IN.)	Approx. Net WT. (LB.)	A
C187-02	1/8		
C187-04	1/4	0.20	1.25
C187-06	3/8	0.20	1.48
C187-08	1/2	0.35	1.56
C187-12	3/4	0.50	1.87
C187-16	1	0.75	2.11
C187-20	1-1/4	1.40	2.34
C187-24	1-1/2	1.55	2.65
C187-32	2	2.75	2.96



EXTRA HEAVY UNION

Part #	Size (IN.)	Approx. Net WT. (LB.)	A
C190-08	1/2		2.00
C190-12	3/4	1.05	2.13



FEMALE UNION ELBOW

Part #	Size (IN.)	Approx. Net WT. (LB.)	A	B
C215-06	3/8		0.94	2.13
C215-08	1/2	0.80	1.13	2.31



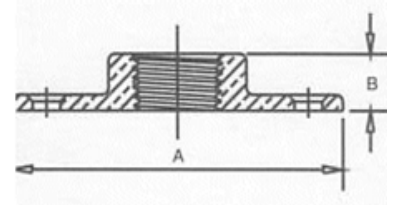
**WARNING: This product contains chemicals known to the state of California to cause cancer and birth defects or other reproductive harm.
 **NOTE: This product is not for use in potable water applications and contains a chemical known to cause birth defects or reproductive harm.

DIMENSIONAL SPECIFICATIONS

LEADED IMPORT CROME PLATED FITTINGS**

FLOOR FLANGE

Part #	Size (IN.)	Approx. Net WT. (LB.)	A	B
C240-04	1/4	0.10	2.47	0.38
C240-06	3/8	0.20	2.69	0.47
C240-08	1/2	0.30	3.52	0.55
C240-12	3/4	0.50	3.52	0.62
C240-16	1	0.85	4.02	0.70
C240-20	1-1/4	1.00	4.02	0.76
C240-24	1-1/2	1.25	4.53	0.89
C240-32	2	2.10	5.54	1.00



**WARNING: This product contains chemicals known to the state of California to cause cancer and birth defects or other reproductive harm.

**NOTE: This product is not for use in potable water applications and contains a chemical known to cause birth defects or reproductive harm.

**MERIT
BRASS**

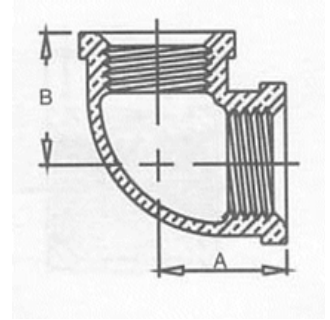
DIRECTING THE FLOW OF *Quality*

DIMENSIONAL SPECIFICATIONS

LEAD-FREE IMPORT CROME PLATED FITTINGS*

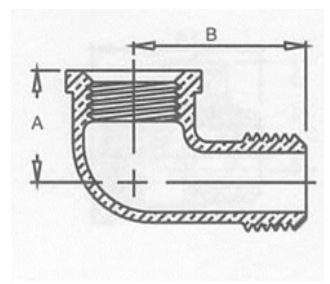
90 DEGREE ELBOW

Part #	Size (IN.)	Approx. Net WT. (LB.)	A	B
CNL101-04	1/4	0.15	0.71	0.71
CNL101-06	3/8	0.15	0.82	0.82
CNL101-08	1/2	0.15	1.01	1.01
CNL101-12	3/4	0.15	1.18	1.18
CNL101-16	1	0.15	1.43	1.43



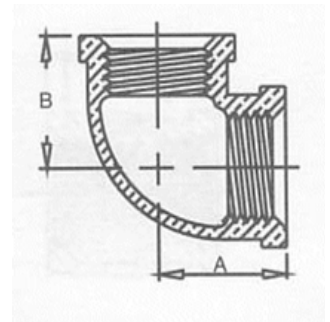
90 DEGREE STREET ELBOW

Part #	Size (IN.)	Approx. Net WT. (LB.)	A	B
CNL103-06	3/8	0.15	0.83	1.24
CNL103-08	1/2	0.15	1.03	1.51
CNL103-12	3/4	0.15	1.19	1.66
CNL103-16	1	0.15	1.43	1.98



90 DEGREE REDUCING ELBOW

Part #	Size (IN.)	Approx. Net WT. (LB.)	A	B
CNL101-0806	1/2 X 3/8	0.20	0.93	0.90
CNL101-1208	3/4 X 1/2	0.45	1.08	1.11



*Conforms with lead content requirements for lead-free plumbing as defined by the U.S. California Safe Drinking Water Act. Certified <0.25 weighted average % lead.



MERIT BRASS

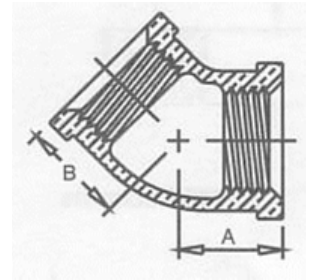
DIRECTING THE FLOW OF *Quality*

DIMENSIONAL SPECIFICATIONS

LEAD-FREE IMPORT CROME PLATED FITTINGS*

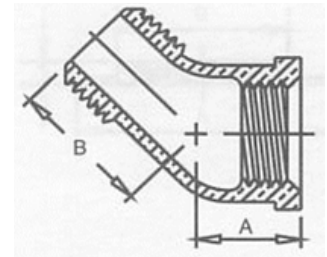
45 DEGREE ELBOW

Part #	Size (IN.)	Approx. Net WT. (LB.)	A	B
CNL102-04	1/4	0.10	0.55	0.55
CNL102-06	3/8	0.15	0.63	0.63
CNL102-08	1/2	0.15	0.79	0.79
CNL102-12	3/4	0.15	0.91	0.91
CNL102-16	1	0.15	1.07	1.07



45 DEGREE STREET ELBOW

Part #	Size (IN.)	Approx. Net WT. (LB.)	A	B
CNL103A-08	1/2	0.20	0.78	1.06



*Conforms with lead content requirements for lead-free plumbing as defined by the U.S. California Safe Drinking Water Act. Certified <0.25 weighted average % lead.



MERIT BRASS

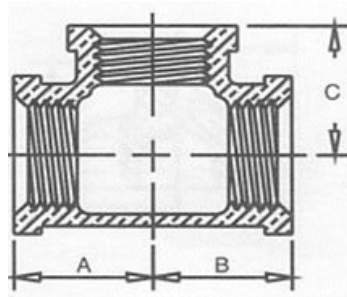
DIRECTING THE FLOW OF *Quality*

DIMENSIONAL SPECIFICATIONS

LEAD-FREE IMPORT CROME PLATED FITTINGS*

TEE

Part #	Size (IN.)	Approx. Net WT. (LB.)	A	B	C
CNL106-06	3/8	0.20	0.82	0.82	0.82
CNL106-08	1/2	0.30	1.01	1.01	1.01
CNL106-12	3/4	0.50	1.18	1.18	1.18



*Conforms with lead content requirements for lead-free plumbing as defined by the U.S. California Safe Drinking Water Act. Certified <0.25 weighted average % lead.



MERIT BRASS

DIRECTING THE FLOW OF *Quality*

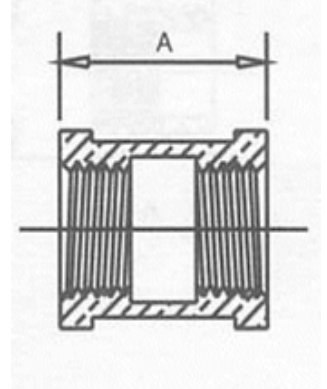
DIMENSIONAL SPECIFICATIONS

LEAD-FREE IMPORT CROME PLATED FITTINGS*



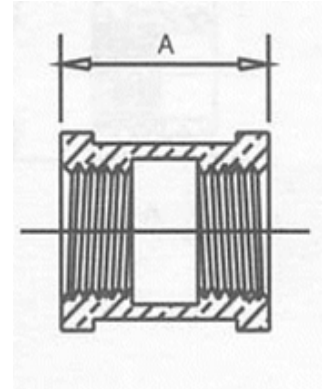
COUPLING

Part #	Size (IN.)	Approx. Net WT. (LB.)	A
CNL111-06	3/8	0.15	1.05
CNL111-08	1/2	0.15	1.29
CNL111-12	3/4	0.15	1.43
CNL111-16	1	0.15	1.68



REDUCING COUPLING

Part #	Size (IN.)	Approx. Net WT. (LB.)	A
CNL112-0604	3/8 X 1/4	0.10	0.92
CNL112-0804	1/2 X 1/4	0.15	1.17
CNL112-0806	1/2 X 3/8	0.15	1.17
CNL112-1208	3/4 X 1/2	0.15	1.35
CNL112-1612	1 X 3/4	0.15	1.56



*Conforms with lead content requirements for lead-free plumbing as defined by the U.S. California Safe Drinking Water Act. Certified <0.25 weighted average % lead.



MERIT BRASS

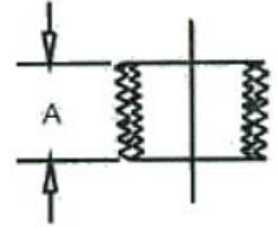
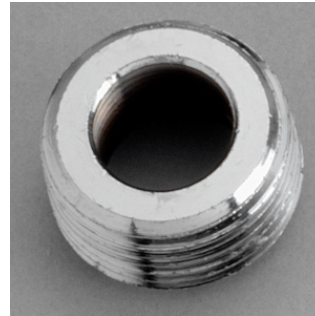
DIRECTING THE FLOW OF *Quality*

DIMENSIONAL SPECIFICATIONS

LEAD-FREE IMPORT CROME PLATED FITTINGS*

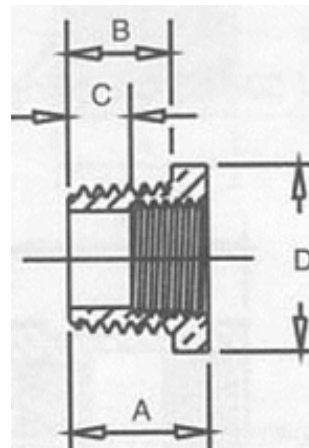
FACE BUSHING

Part #	Size (IN.)	Approx. Net WT. (LB.)	A	B
CNL115-0604	3/8 X 1/4	0.02	0.48	0.40



HEX BUSHING

Part #	Size (IN.)	Approx. Net WT. (LB.)	A	B	C	D
CNL114-0402	1/4 X 1/8	0.03				
CNL114-0602	3/8 X 1/8	0.05				
CNL114-0804	1/2 X 1/4	0.10	0.75	0.56	0.43	0.88
CNL114-0806	1/2 X 3/8	0.15	0.75	0.56	0.34	0.88
CNL114-1208	3/4 X 1/2	0.15	0.85	0.63	0.32	1.16
CNL114-1612	1 X 3/4	0.15	1.00	0.75	0.50	1.13



*Conforms with lead content requirements for lead-free plumbing as defined by the U.S. California Safe Drinking Water Act. Certified <0.25 weighted average % lead.

MERIT BRASS

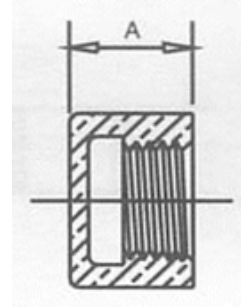
DIRECTING THE FLOW OF *Quality*

DIMENSIONAL SPECIFICATIONS

LEAD-FREE IMPORT CROME PLATED FITTINGS*

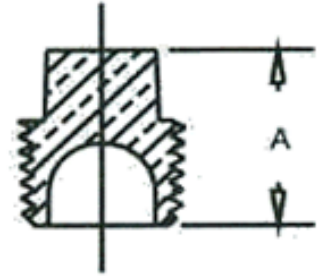
CAP

Part #	Size (IN.)	Approx. Net WT. (LB.)	A
CNL116-06	3/8	0.15	0.66
CNL116-08	1/2	0.15	0.78
CNL116-12	3/4	0.15	0.84
CNL116-16	1	0.15	1.00



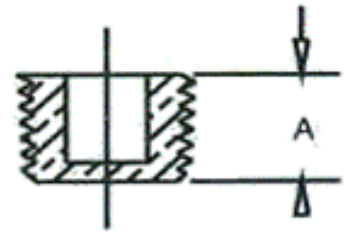
SQUARE HEAD SOLID PLUG

Part #	Size (IN.)	Approx. Net WT. (LB.)	A
CNL117A-02	1/8	0.03	0.51
CNL117A-06	3/8	0.05	0.72
CNL117A-08	1/2	0.12	0.92



SQUARE COUNTERSUNK PLUG

Part #	Size (IN.)	Approx. Net WT. (LB.)	A
CNL118-12	3/4	0.15	0.55



*Conforms with lead content requirements for lead-free plumbing as defined by the U.S. California Safe Drinking Water Act. Certified <0.25 weighted average % lead.



**MERIT
BRASS**

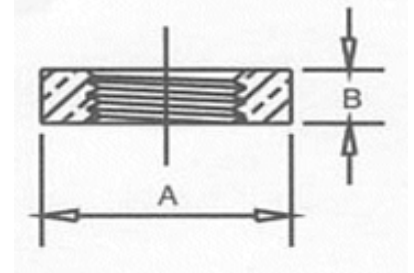
DIRECTING THE FLOW OF *Quality*

DIMENSIONAL SPECIFICATIONS

LEAD-FREE IMPORT CROME PLATED FITTINGS*

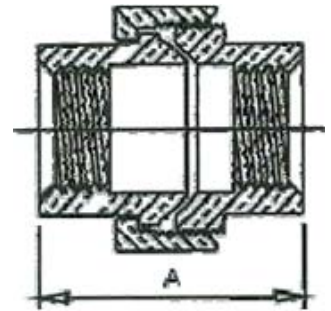
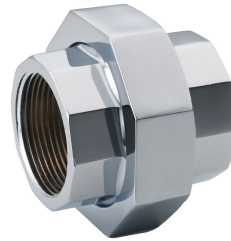
HEX LOCKNUT

Part #	Size (IN.)	Approx. Net WT. (LB.)	A	B
CNL119-04	1/4	0.03	0.88	0.25
CNL119-08	1/2	0.10	1.28	0.31



UNION

Part #	Size (IN.)	Approx. Net WT. (LB.)	A
CNL187-06	3/8	0.35	1.48
CNL187-08	1/2	0.35	1.56



*Conforms with lead content requirements for lead-free plumbing as defined by the U.S. California Safe Drinking Water Act. Certified <0.25 weighted average % lead.



MERIT BRASS

DIRECTING THE FLOW OF *Quality*