

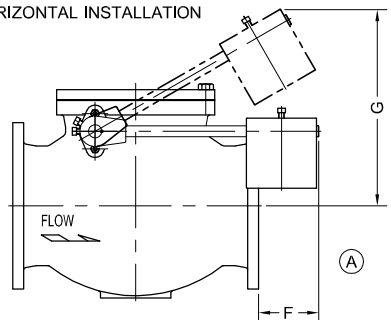
	2 1/2"		3"		4"		6"		8"		10"		12"		14"		16"		18"		20"	
	IN	MM	IN	MM	IN	MM	IN	MM	IN	MM	IN	MM	IN	MM	IN	MM	IN	MM	IN	MM	IN	MM
A*	12	305	12	305	13	330	17 1/2	445	18	457	23	584	28	711	33	838	36	914	40	1016	40	1016
B	7	178	7	178	8 1/2	216	9	229	12	305	14	356	16	406	22	559	23	584	24	610	24	610
C	5	127	5	127	5	127	6	152	9	229	9	229	11	279	13	330	14	356	17 1/4	438	17 1/4	438
D	10	254	10	254	11	279	12	305	14	356	15	381	17	432	20	508	24	610	28	711	28	711
E	5	127	5	127	5	127	7	178	8	203	9	229	11	279	14	356	16	406	18	457	18	457
F	5	127	5	127	4	102	3	77	3	77	-	-	8	204	-	-	-	-	-	-	-	-
G	15	381	15	381	16	406	19	483	21	533	23	584	32	813	34	864	35	889	37	940	37	940
H	9 1/4	235	9 1/4	235	8 1/2	216	10 5/8	270	9	229	8	203	17	432	14 3/4	375	13 3/4	349	-	-	-	-

* "A" DIMENSION OF VALVES WITH RAISED FACE DOES NOT INCLUDE RAISED FACE HEIGHT

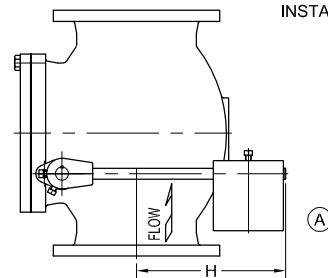
(A)

NO.	PART NAMES	NO.	PART NAMES
1	BODY	12	DISC ARM SET SCREW
2	BODY SEAT	13	INNER BUSHING
2A	SEAT O RING	14	OUTER BUSHING
2B	SEAT PIN	15	GLAND
3	DISC & CENTER PIN	16	GLAND STUDS
4	DISC ARM	17	GLAND PACKING
5A	RENEWABLE SEAT	18	SHAFT LOCK PIN
5B	SEAT FOLLOWER	19	DISC ARM KEY
5C	SEAT SCREWS	30	COUNTERWEIGHT ARM
6	DISC NUT	30A	COUNTERWEIGHT ARM SET SCREWS
6A	DISC NUT WASHER	30B	COUNTERWEIGHT ARM KEY
6B	DISC NUT PIN	31	COUNTERWEIGHT
8	COVER GASKET	31A	COUNTERWEIGHT SET SCREW
9	COVER	33	COVER PLUG (14"-20" VALVES ONLY)
10	COVER BOLTS	34	SHAFT END PLATE
11	SHAFT	35	SHAFT END PLATE BOLTS
		36	SHAFT END PLATE SEAL

HORIZONTAL INSTALLATION

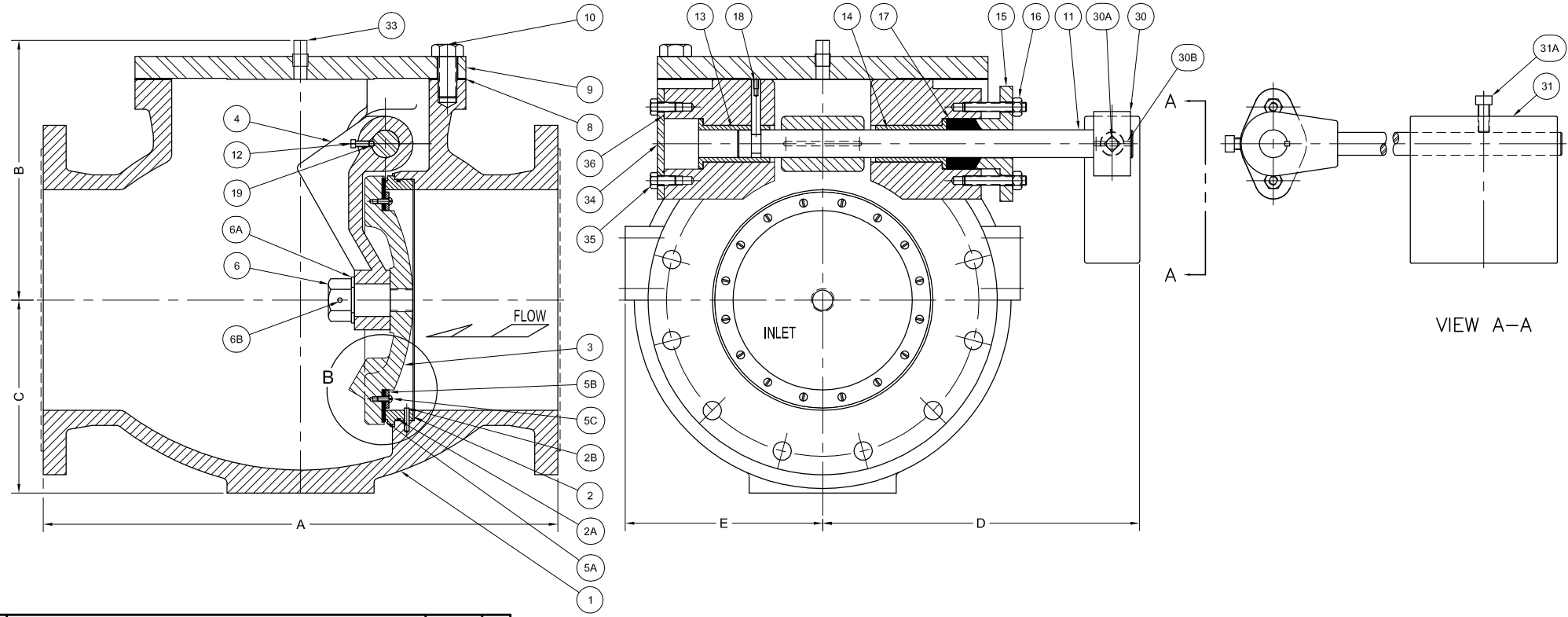


VERTICAL INSTALLATION



NOTE: SUFFIX "A" USED AFTER FIGURE NUMBER FOR VERTICAL INSTALLATION (FIG.NO.220-DA)

(C)



VIEW A-A

REV.	DESCRIPTION	DATE	BY
C	REVISED TITLEBLOCK AND VERTICAL INSTALLATION NOTE	05-30-2019	JT
B	REMOVED MM VIEW	08-10-2018	JH
A	ADD SIZES TO TITLE BLOCK; ELIMINATE FIGURE NUMBER TABLE; RE-DRAWN IN AUTOCAD; ADD DIMENSIONS F, G, & H	10-30-2013	BRF

GA INDUSTRIES
 2 1/2" - 20" FIGURE 220
 SWING CHECK VALVE
 LEVER AND WEIGHT

DIMENSIONS IN INCHES		SERIAL NO.	DRAWN BY
STANDARD TOLERANCES:	UNLESS OTHERWISE SPECIFIED	FIG. NUMBER 220D/220U	APPR. BY
FRACTIONS: 1/16, 1/8, 1/4, 3/8, 1/2, 5/8, 3/4, 7/8	DECIMALS: 0.0005, 0.001, 0.002, 0.005, 0.010, 0.015, 0.030, 0.060, 0.125, 0.250, 0.500, 1.000	DATE 01-23-1991	SCALE NTS
ANGLES: ± 30'	PER 2019 ISO 9001 CERT. #332 (BUSINESS PRIORITY)	REFERENCES FILE	DRAWING NO. REV.
		C-1018-G	C3 C-1146

U:\Autocad\GA-Valves\GA-220\GA-220.dwg