

Building connections that last™




Heavy Pattern 150# Stainless Fittings





Heavy Pattern 150# Stainless Fittings

Specifications

-  branded
- Stainless castings conform to ASTM A351 ACI Grade CF8 (304) & ACI Grade CF8M (316)
- NPT threads conform to ASME B1.20.1
- Manufacturing facility is ISO 9001:2008 Certified
- Fittings meet applicable chemical & mechanical properties



SCI ProPak™ System

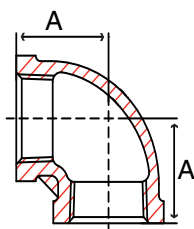
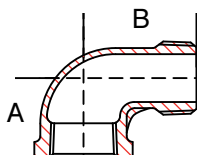


Fig. S3114E & S3116E - 90° Elbow

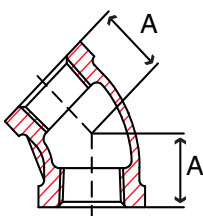
Size in	Part Number		A in	Packing		Weight lb
	304	316		Inner	Master	
1/8	S3114E 001	S3116E 001	0.71	120	480	0.05
1/4	S3114E 002	S3116E 002	0.77	100	400	0.08
3/8	S3114E 003	S3116E 003	0.94	50	200	0.12
1/2	S3114E 004	S3116E 004	1.16	30	120	0.19
3/4	S3114E 006	S3116E 006	1.26	18	72	0.30
1	S3114E 010	S3116E 010	1.44	10	40	0.52
1-1/4	S3114E 012	S3116E 012	1.73	4	16	0.71
1-1/2	S3114E 014	S3116E 014	1.91	3	12	1.07
2	S3114E 020	S3116E 020	2.24	2	8	1.45
2-1/2	S3114E 024	S3116E 024	2.70	-	6	3.26
3	S3114E 030	S3116E 030	3.09	-	3	4.66
4	S3114E 040	S3116E 040	3.82	-	2	7.05

Fig. S3114SE & S3116SE - 90° Street Elbow



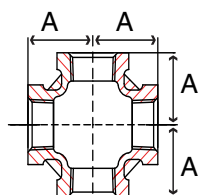
Size in	Part Number		A in	B in	Packing		Weight lb
	304	316			Inner	Master	
1/8	S3114SE001	S3116SE001	0.69	1.00	150	600	0.04
1/4	S3114SE002	S3116SE002	0.83	1.18	100	400	0.07
3/8	S3114SE003	S3116SE003	0.91	1.52	50	200	0.11
1/2	S3114SE004	S3116SE004	1.12	1.69	32	128	0.20
3/4	S3114SE006	S3116SE006	1.24	1.83	12	48	0.29
1	S3114SE010	S3116SE010	1.48	2.09	8	32	0.52
1-1/4	S3114SE012	S3116SE012	1.77	2.48	4	16	0.72
1-1/2	S3114SE014	S3116SE014	1.83	2.72	2	4	0.92
2	S3114SE020	S3116SE020	2.38	3.35	2	8	1.79
2-1/2	S3114SE024	S3116SE024	2.62	4.13	-	4	2.73
3	S3114SE030	S3116SE030	3.09	4.43	-	3	3.87
4	S3114SE040	S3116SE040	3.82	5.04	-	2	6.07

Fig. S3114F & S3116F - 45° Elbow



Size in	Part Number		A in	Packing		Weight lb
	304	316		Inner	Master	
1/8	S3114F 001	S3116F 001	0.73	120	480	0.07
1/4	S3114F 002	S3116F 002	0.75	100	400	0.07
3/8	S3114F 003	S3116F 003	0.75	60	240	0.11
1/2	S3114F 004	S3116F 004	0.87	30	120	0.22
3/4	S3114F 006	S3116F 006	0.91	20	80	0.34
1	S3114F 010	S3116F 010	1.10	8	32	0.53
1-1/4	S3114F 012	S3116F 012	1.26	6	24	0.66
1-1/2	S3114F 014	S3116F 014	1.38	3	12	0.93
2	S3114F 020	S3116F 020	1.65	2	8	1.34
2-1/2	S3114F 024	S3116F 024	1.85	-	6	2.87
3	S3114F 030	S3116F 030	2.05	-	4	3.93
4	S3114F 040	S3116F 040	2.60	-	2	5.91

Fig. S3114X & S3116X - Cross



Size in	Part Number		A in	Packing		Weight lb
	304	316		Inner	Master	
1/8	S3114X 001	S3116X 001	0.71	50	200	0.11
1/4	S3114X 002	S3116X 002	0.77	50	200	0.18
3/8	S3114X 003	S3116X 003	0.94	24	96	0.31
1/2	S3114X 004	S3116X 004	1.16	10	40	0.43
3/4	S3114X 006	S3116X 006	1.26	8	32	0.62
1	S3114X 010	S3116X 010	1.44	4	16	1.05
1-1/4	S3114X 012	S3116X 012	1.73	3	12	1.49
1-1/2	S3114X 014	S3116X 014	1.91	2	8	1.90
2	S3114X 020	S3116X 020	2.24	-	8	3.04
2-1/2	S3114X 024	S3116X 024	2.70	-	2	5.44
3	S3114X 030	S3116X 030	3.09	-	2	7.32
4	S3114X 040	S3116X 040	3.82	-	1	11.34

HVY PATTERN 150#

Fig. S3114T & S3116T - Tee

Size in	Part Number		A in	Packing		Weight lb
	304	316		Inner	Master	
1/8	S3114T 001	S3116T 001	0.71	75	300	0.09
1/4	S3114T 002	S3116T 002	0.77	70	280	0.11
3/8	S3114T 003	S3116T 003	0.94	40	160	0.18
1/2	S3114T 004	S3116T 004	1.16	15	60	0.29
3/4	S3114T 006	S3116T 006	1.26	12	48	0.46
1	S3114T 010	S3116T 010	1.44	6	24	0.68
1-1/4	S3114T 012	S3116T 012	1.73	-	20	1.06
1-1/2	S3114T 014	S3116T 014	1.91	-	12	1.39
2	S3114T 020	S3116T 020	2.24	-	9	1.97
2-1/2	S3114T 024	S3116T 024	2.70	-	5	4.54
3	S3114T 030	S3116T 030	3.09	-	2	6.26
4	S3114T 040	S3116T 040	3.82	-	1	9.43

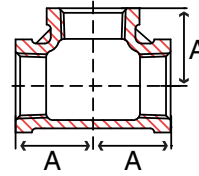
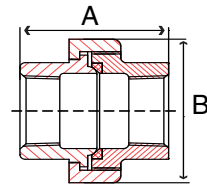


Fig. S3114U & S3116U - Union

Size in	Part Number		A in	B in	Packing		Weight lb
	304	316			Inner	Master	
1/8	S3114U 001	S3116U 001	1.44	1.14	45	180	0.22
1/4	S3114U 002	S3116U 002	1.44	1.14	45	180	0.19
3/8	S3114U 003	S3116U 003	1.48	1.42	24	96	0.30
1/2	S3114U 004	S3116U 004	1.63	1.61	16	64	0.37
3/4	S3114U 006	S3116U 006	1.85	1.93	12	48	0.53
1	S3114U 010	S3116U 010	1.97	2.28	8	32	0.85
1-1/4	S3114U 012	S3116U 012	2.05	2.68	4	16	1.13
1-1/2	S3114U 014	S3116U 014	2.28	3.03	2	8	1.56
2	S3114U 020	S3116U 020	2.48	3.62	2	8	2.37
2-1/2	S3114U 024	S3116U 024	2.89	4.29	-	8	3.81
3	S3114U 030	S3116U 030	3.54	4.92	-	4	5.34
4	S3114U 040	S3116U 040	3.94	6.18	-	2	8.60



HVY PATTERN 150#

Fig. S3114SP & S3116SP - Square Head Plug

Size in	Part Number		A in	B in	Packing		Weight lb
	304	316			Inner	Master	
1/8	S3114SP001	S3116SP001	0.71	0.28	600	2400	0.02
1/4	S3114SP002	S3116SP002	0.77	0.35	350	1400	0.03
3/8	S3114SP003	S3116SP003	0.79	0.38	250	1000	0.06
1/2	S3114SP004	S3116SP004	0.93	0.51	100	400	0.05
3/4	S3114SP006	S3116SP006	1.18	0.72	60	240	0.13
1	S3114SP010	S3116SP010	1.30	0.75	36	144	0.16
1-1/4	S3114SP012	S3116SP012	1.54	0.91	28	112	0.27
1-1/2	S3114SP014	S3116SP014	1.57	1.04	24	96	0.33
2	S3114SP020	S3116SP020	1.77	1.16	9	36	0.57
2-1/2	S3114SP024	S3116SP024	1.89	1.57	5	20	0.80
3	S3114SP030	S3116SP030	2.15	1.75	3	12	1.19
4	S3114SP040	S3116SP040	2.36	2.34	-	10	2.12

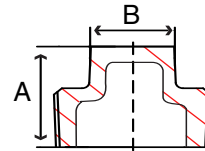


Fig. S3114HP & S3116HP - Hex Head Plug

Size in	Part Number		A in	B in	Packing		Weight lb
	304	316			Inner	Master	
1/8	S3114HP001	S3116HP001	0.71	0.55	400	1600	0.04
1/4	S3114HP002	S3116HP002	0.91	0.67	300	1200	0.05
3/8	S3114HP003	S3116HP003	0.94	0.83	120	480	0.06
1/2	S3114HP004	S3116HP004	1.06	1.02	100	400	0.10
3/4	S3114HP006	S3116HP006	1.10	1.26	60	240	0.16
1	S3114HP010	S3116HP010	1.34	1.50	35	140	0.24
1-1/4	S3114HP012	S3116HP012	1.40	1.81	18	72	0.34
1-1/2	S3114HP014	S3116HP014	1.44	2.05	15	60	0.48
2	S3114HP020	S3116HP020	1.46	2.56	6	24	0.72
2-1/2	S3114HP024	S3116HP024	1.91	3.17	4	16	1.35
3	S3114HP030	S3116HP030	1.99	3.76	-	12	1.92
4	S3114HP040	S3116HP040	2.03	4.76	-	10	2.70

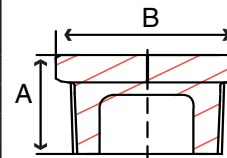
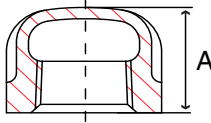
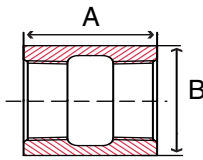


Fig. S3114C & S3116C - Cap



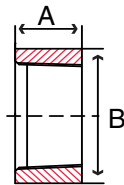
Size in	Part Number		A in	Packing		Weight lb
	304	316		Inner	Master	
1/8	S3114C 001	S3116C 001	0.61	300	1200	0.03
1/4	S3114C 002	S3116C 002	0.87	150	600	0.07
3/8	S3114C 003	S3116C 003	0.96	80	320	0.12
1/2	S3114C 004	S3116C 004	1.10	60	240	0.16
3/4	S3114C 006	S3116C 006	1.10	40	160	0.23
1	S3114C 010	S3116C 010	1.28	18	72	0.36
1-1/4	S3114C 012	S3116C 012	1.30	12	48	0.53
1-1/2	S3114C 014	S3116C 014	1.42	9	36	0.64
2	S3114C 020	S3116C 020	1.48	4	16	1.00
2-1/2	S3114C 024	S3116C 024	1.71	-	15	1.61
3	S3114C 030	S3116C 030	1.89	-	12	2.90
4	S3114C 040	S3116C 040	2.03	-	4	4.95

Fig. S3114CP & S3116CP - Full Coupling



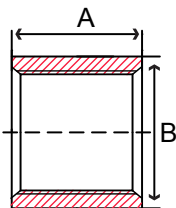
Size in	Part Number		A in	B in	Packing		Weight lb
	304	316			Inner	Master	
1/8	S3114CP001	S3116CP001	0.79	0.55	200	800	0.04
1/4	S3114CP002	S3116CP002	1.06	0.73	120	480	0.07
3/8	S3114CP003	S3116CP003	1.10	0.85	100	400	0.07
1/2	S3114CP004	S3116CP004	1.40	1.05	60	240	0.16
3/4	S3114CP006	S3116CP006	1.48	1.25	30	120	0.19
1	S3114CP010	S3116CP010	1.69	1.56	16	64	0.37
1-1/4	S3114CP012	S3116CP012	1.89	1.91	12	48	0.53
1-1/2	S3114CP014	S3116CP014	1.89	2.17	12	48	0.65
2	S3114CP020	S3116CP020	2.20	2.62	4	16	0.99
2-1/2	S3114CP024	S3116CP024	2.56	3.33	-	8	2.07
3	S3114CP030	S3116CP030	2.80	3.96	-	6	2.77
4	S3114CP040	S3116CP040	3.27	5.10	-	3	5.11
6	S3114CP060	S3116CP060	3.94	7.06	-	1	7.95

Fig. S3114HC & S3116HC - Half Coupling



Size in	Part Number		A in	B in	Packing		Weight lb
	304	316			Inner	Master	
1/8	S3114HC001	S3116HC001	0.43	0.55	400	1600	0.02
1/4	S3114HC002	S3116HC002	0.51	0.73	300	1200	0.03
3/8	S3114HC003	S3116HC003	0.55	0.85	200	800	0.03
1/2	S3114HC004	S3116HC004	0.71	1.05	100	400	0.09
3/4	S3114HC006	S3116HC006	0.77	1.25	60	240	0.09
1	S3114HC010	S3116HC010	0.83	1.56	35	140	0.18
1-1/4	S3114HC012	S3116HC012	0.94	1.91	24	96	0.24
1-1/2	S3114HC014	S3116HC014	0.94	2.17	20	80	0.31
2	S3114HC020	S3116HC020	1.10	2.62	8	32	0.44
2-1/2	S3114HC024	S3116HC024	1.30	3.33	4	16	1.01
3	S3114HC030	S3116HC030	1.42	3.96	-	12	1.37
4	S3114HC040	S3116HC040	1.65	5.10	-	6	2.56
6	S3114HC060	S3116HC060	1.97	7.06	-	1	3.95

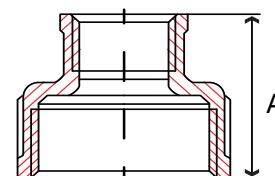
Fig. 29DC14 - 304 SS Recessed Drop Pipe Coupling



Size in	Part Number	A in	B in	Packing		Weight lb
				Inner	Master	
1	29DC14010	2.50	1.67	15	90	0.7
1-1/4	29DC14012	2.50	2.03	20	80	0.8
1-1/2	29DC14014	2.50	2.31	7	42	1.0
2	29DC14020	2.50	2.75	5	30	1.2

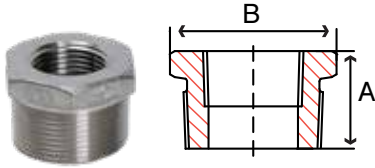
Fig. S3114RC & S3116RC - Reducing Coupling

Size in	Part Number		A in	Packing		Weight lb
	304	316		Inner	Master	
1/4 x 1/8	S3114RC002001	S3116RC002001	1.12	150	600	0.07
3/8 x 1/8	S3114RC003001	S3116RC003001	1.59	60	240	0.13
3/8 x 1/4	S3114RC003002	S3116RC003002	1.59	60	240	0.15
1/2 x 1/8	S3114RC004001	S3116RC004001	1.75	40	160	0.16
1/2 x 1/4	S3114RC004002	S3116RC004002	1.75	40	160	0.18
1/2 x 3/8	S3114RC004003	S3116RC004003	1.75	40	160	0.20
3/4 x 1/8	S3114RC006001	S3116RC006001	1.75	24	96	0.21
3/4 x 1/4	S3114RC006002	S3116RC006002	1.75	24	96	0.21
3/4 x 3/8	S3114RC006003	S3116RC006003	1.75	24	96	0.23
3/4 x 1/2	S3114RC006004	S3116RC006004	1.75	24	96	0.26
1 x 1/8	S3114RC010001	S3116RC010001	1.97	12	48	0.35
1 x 1/4	S3114RC010002	S3116RC010002	1.97	12	48	0.36
1 x 3/8	S3114RC010003	S3116RC010003	1.97	12	48	0.37
1 x 1/2	S3114RC010004	S3116RC010004	1.97	12	48	0.36
1 x 3/4	S3114RC010006	S3116RC010006	1.97	12	48	0.42
1-1/4 x 1/8	S3114RC012001	S3116RC012001	1.97	12	48	0.45
1-1/4 x 1/4	S3114RC012002	S3116RC012002	1.97	12	48	0.51
1-1/4 x 3/8	S3114RC012003	S3116RC012003	1.97	12	48	0.48
1-1/4 x 1/2	S3114RC012004	S3116RC012004	1.97	12	48	0.51
1-1/4 x 3/4	S3114RC012006	S3116RC012006	1.97	12	48	0.53
1-1/4 x 1	S3114RC012010	S3116RC012010	1.97	12	48	0.62
1-1/2 x 1/8	S3114RC014001	S3116RC014001	2.26	8	32	0.59
1-1/2 x 1/4	S3114RC014002	S3116RC014002	2.26	8	32	0.59
1-1/2 x 3/8	S3114RC014003	S3116RC014003	2.26	8	32	0.62
1-1/2 x 1/2	S3114RC014004	S3116RC014004	2.26	8	32	0.61
1-1/2 x 3/4	S3114RC014006	S3116RC014006	2.26	8	32	0.66
1-1/2 x 1	S3114RC014010	S3116RC014010	2.26	4	16	0.70
1-1/2 x 1-1/4	S3114RC014012	S3116RC014012	2.26	4	16	0.75
2 x 1/8	S3114RC020001	S3114RC020001	2.64	4	16	0.99
2 x 1/4	S3114RC020002	S3116RC020002	2.64	4	16	0.93
2 x 3/8	S3114RC020003	S3116RC020003	2.64	4	16	0.96
2 x 1/2	S3114RC020004	S3116RC020004	2.64	4	16	0.98
2 x 3/4	S3114RC020006	S3116RC020006	2.64	4	16	1.03
2 x 1	S3114RC020010	S3116RC020010	2.64	4	16	1.07
2 x 1-1/4	S3114RC020012	S3116RC020012	2.64	4	16	1.12
2 x 1-1/2	S3114RC020014	S3116RC020014	2.64	2	8	1.13
2-1/2 x 1/2	S3114RC024004	S3116RC024004	2.95	-	16	1.68
2-1/2 x 3/4	S3114RC024006	S3116RC024006	2.95	-	16	1.60
2-1/2 x 1	S3114RC024010	S3116RC024010	2.95	-	16	1.68
2-1/2 x 1-1/4	S3114RC024012	S3116RC024012	2.95	-	16	1.73
2-1/2 x 1-1/2	S3114RC024014	S3116RC024014	2.95	-	16	1.78
2-1/2 x 2	S3114RC024020	S3116RC024020	2.95	-	9	1.92
3 x 3/4	S3114RC030006	S3116RC030006	3.27	-	9	2.71
3 x 1	S3114RC030010	S3116RC030010	3.27	-	9	2.68
3 x 1-1/4	S3114RC030012	S3116RC030012	3.27	-	9	2.79
3 x 1-1/2	S3114RC030014	S3116RC030014	3.27	-	9	2.73
3 x 2	S3114RC030020	S3116RC030020	3.27	-	9	2.84
3 x 2-1/2	S3114RC030024	S3116RC030024	3.27	-	6	3.10
4 x 1	S3114RC040010	S3116RC040010	3.82	-	3	4.73
4 x 1-1/2	S3114RC040014	S3116RC040014	3.82	-	3	4.86
4 x 2	S3114RC040020	S3116RC040020	3.82	-	3	5.03
4 x 2-1/2	S3114RC040024	S3116RC040024	3.82	-	3	5.13
4 x 3	S3114RC040030	S3116RC040030	3.82	-	3	5.56



H V Y P A T T E R N 1 5 0 #

Fig. S3114HB & S3116HB - Hex Bushing



Size in	Part Number		A in	B in	Packing		Weight lb
	304	316			Inner	Master	
1/4 x 1/8	S3114HB002001	S3116HB002001	0.89	0.69	300	1200	0.04
3/8 x 1/8	S3114HB003001	S3116HB003001	0.91	0.87	120	480	0.07
3/8 x 1/4	S3114HB003002	S3116HB003002	0.91	0.87	120	480	0.05
1/2 x 1/8	S3114HB004001	S3116HB004001	0.99	1.00	100	400	0.09
1/2 x 1/4	S3114HB004002	S3116HB004002	0.99	1.00	100	400	0.09
1/2 x 3/8	S3114HB004003	S3116HB004003	0.99	1.00	100	400	0.05
3/4 x 1/8	S3114HB006001	S3116HB006001	1.02	1.24	60	240	0.16
3/4 x 1/4	S3114HB006002	S3116HB006002	1.02	1.24	60	240	0.15
3/4 x 3/8	S3114HB006003	S3116HB006003	1.02	1.24	60	240	0.15
3/4 x 1/2	S3114HB006004	S3116HB006004	1.02	1.24	60	240	0.13
1 x 1/8	S3114HB010001	S3116HB010001	1.30	1.52	36	144	0.26
1 x 1/4	S3114HB010002	S3116HB010002	1.30	1.52	36	144	0.25
1 x 3/8	S3114HB010003	S3116HB010003	1.30	1.52	36	144	0.24
1 x 1/2	S3114HB010004	S3116HB010004	1.30	1.52	36	144	0.22
1 x 3/4	S3114HB010006	S3116HB010006	1.30	1.52	36	144	0.17
1-1/4 x 1/8	S3114HB012001	S3116HB012001	1.30	1.81	18	72	0.35
1-1/4 x 1/4	S3114HB012002	S3116HB012002	1.30	1.81	18	72	0.36
1-1/4 x 3/8	S3114HB012003	S3116HB012003	1.30	1.81	18	72	0.35
1-1/4 x 1/2	S3114HB012004	S3116HB012004	1.30	1.81	18	72	0.35
1-1/4 x 3/4	S3114HB012006	S3116HB012006	1.30	1.81	18	72	0.28
1-1/4 x 1	S3114HB012010	S3116HB012010	1.30	1.81	18	72	0.26
1-1/2 x 1/4	S3114HB014002	S3116HB014002	1.38	2.03	18	72	0.52
1-1/2 x 3/8	S3114HB014003	S3116HB014003	1.38	2.03	18	72	0.52
1-1/2 x 1/2	S3114HB014004	S3116HB014004	1.38	2.03	18	72	0.51
1-1/2 x 3/4	S3114HB014006	S3116HB014006	1.38	2.03	18	72	0.49
1-1/2 x 1	S3114HB014010	S3116HB014010	1.38	2.03	18	72	0.45
1-1/2 x 1-1/4	S3114HB014012	S3116HB014012	1.38	2.03	18	72	0.34
2 x 1/4	S3114HB020002	S3116HB020002	1.42	2.46	9	36	0.77
2 x 3/8	S3114HB020003	S3116HB020003	1.42	2.46	9	36	0.80
2 x 1/2	S3114HB020004	S3116HB020004	1.42	2.46	9	36	0.77
2 x 3/4	S3114HB020006	S3116HB020006	1.42	2.46	9	36	0.75
2 x 1	S3114HB020010	S3116HB020010	1.42	2.46	9	36	0.77
2 x 1-1/4	S3114HB020012	S3116HB020012	1.93	3.15	9	36	0.70
2 x 1-1/2	S3114HB020014	S3116HB020014	1.93	3.15	9	36	0.57
2-1/2 x 1/2	S3114HB024004	S3116HB024004	1.93	3.15	4	16	1.26
2-1/2 x 3/4	S3114HB024006	S3116HB024006	1.93	3.15	4	16	1.32
2-1/2 x 1	S3114HB024010	S3116HB024010	1.93	3.15	4	16	1.40
2-1/2 x 1-1/4	S3114HB024012	S3116HB024012	1.93	3.15	4	16	1.40
2-1/2 x 1-1/2	S3114HB024014	S3116HB024014	1.93	3.15	4	16	1.23
2-1/2 x 2	S3114HB024020	S3116HB024020	1.93	3.15	4	16	0.99
3 x 1/2	S3114HB030004	S3116HB030004	1.95	3.76	3	12	2.12
3 x 3/4	S3114HB030006	S3116HB030006	1.95	3.76	3	12	2.08
3 x 1	S3114HB030010	S3116HB030010	1.95	3.76	3	12	2.17
3 x 1-1/4	S3114HB030012	S3116HB030012	1.95	3.76	3	12	2.20
3 x 1-1/2	S3114HB030014	S3116HB030014	1.95	3.76	3	12	2.10
3 x 2	S3114HB030020	S3116HB030020	1.95	3.76	3	12	1.90
3 x 2-1/2	S3114HB030024	S3116HB030024	1.95	3.76	3	12	1.61
4 x 1	S3114HB040010	S3116HB040010	2.01	4.74	-	8	3.64
4 x 1-1/4	S3114HB040012	S3116HB040012	2.01	4.74	-	8	3.50
4 x 1-1/2	S3114HB040014	S3116HB040014	2.01	4.74	-	8	3.61
4 x 2	S3114HB040020	S3116HB040020	2.01	4.74	-	8	3.52
4 x 2-1/2	S3114HB040024	S3116HB040024	2.01	4.74	-	8	3.40
4 x 3	S3114HB040030	S3116HB040030	2.01	4.74	-	8	2.83

All bushings are outside hex.

Fig. S3616WS - Weld Spud

Size in	Part Number 316	A in	B in	Packing		Weight lb
				Inner	Master	
1/4	S3616WS002	0.50	1.50	-	1	0.05
3/8	S3616WS003	0.50	1.62	-	1	0.06
1/2	S3616WS004	0.59	1.75	-	1	0.1
3/4	S3616WS006	0.65	1.93	-	1	0.2
1	S3616WS010	0.78	2.18	-	1	0.2
1-1/4	S3616WS012	0.75	2.68	-	1	0.3
1-1/2	S3616WS014	0.87	3.00	-	1	0.4
2	S3616WS020	0.93	3.50	-	1	0.6
2-1/2	S3616WS024	1.00	4.06	-	1	1.1
3	S3616WS030	1.00	4.62	-	1	1.3
4	S3616WS040	1.12	5.81	-	1	2.6

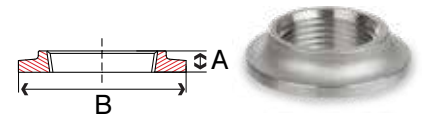
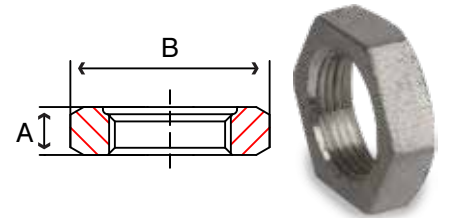


Fig. S3314LN & S3316LN - Lock Nut

Size in	Part Number		A in	B* in	Packing		Weight lb
	304	316			Inner	Master	
1/8	S3314LN001	S3316LN001	0.25	0.66	-	1	0.03
1/4	S3314LN002	S3316LN002	0.28	0.84	-	1	0.03
3/8	S3314LN003	S3316LN003	0.30	1.00	-	1	0.05
1/2	S3314LN004	S3316LN004	0.30	1.18	-	1	0.06
3/4	S3314LN006	S3316LN006	0.36	1.43	-	1	0.1
1	S3314LN010	S3316LN010	0.35	1.75	-	1	0.1
1-1/4	S3314LN012	S3316LN012	0.46	2.10	-	1	0.2
1-1/2	S3314LN014	S3316LN014	0.46	2.35	-	1	0.3
2	S3314LN020	S3316LN020	0.52	2.88	-	1	0.4
2-1/2	S3314LN024	S3316LN024	0.58	3.50	-	1	0.8
3	S3314LN030	S3316LN030	0.67	4.27	-	1	1.3
4	S3314LN040	S3316LN040	0.71	5.38	-	1	2.0

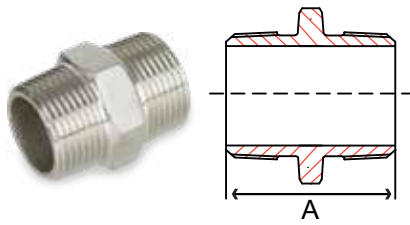


HVY PATTERN 150#

*Dimensions are minimums

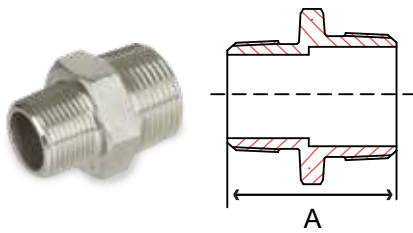


Fig. S8346HN - 316 Hex Nipple



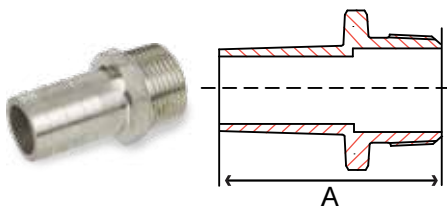
Diameter in	Part Number 316	A in	Packing		Weight lb
			Inner	Master	
1/8	S8346HN001	1.30	50	200	0.02
1/4	S8346HN002	1.30	50	200	0.04
3/8	S8346HN003	1.38	50	200	0.08
1/2	S8346HN004	1.67	50	200	0.1
3/4	S8346HN006	1.81	25	100	0.1
1	S8346HN010	1.97	25	100	0.3
1 1/4	S8346HN012	2.28	-	50	0.4
1 1/2	S8346HN014	2.36	-	50	0.6
2	S8346HN020	2.70	-	20	0.9

Fig. S8346RH - 316 Reducing Hex Nipple



Diameter in	Part Number 316	A in	Packing		Weight lb
			Inner	Master	
1/4 x 1/8	S8346RH002001	1.30	50	200	0.04
3/8 x 1/4	S8346RH003002	1.38	50	200	0.08
1/2 x 3/8	S8346RH004003	1.67	50	200	0.1
3/4 x 1/2	S8346RH006004	1.81	25	100	0.1
1 x 3/4	S8346RH010006	1.97	25	100	0.3
1-1/4 x 1	S8346RH012010	2.28	-	50	0.4
1-1/2 x 1-1/4	S8346RH014012	2.36	-	50	0.6
2 x 1-1/2	S8346RH020014	2.70	-	20	0.9

Fig. S8346KN - 316 King Nipple Hose x Threaded



Diameter in	Part Number 316	A in	Packing		Weight lb
			Inner	Master	
1/8	S8346KN001	1.57	25	100	0.02
1/4	S8346KN002	1.77	25	100	0.05
3/8	S8346KN003	1.97	25	100	0.07
1/2	S8346KN004	2.36	25	100	0.1
3/4	S8346KN006	2.56	25	100	0.2
1	S8346KN010	2.95	-	50	0.3
1 1/4	S8346KN012	3.35	-	40	0.5
1 1/2	S8346KN014	3.54	-	40	0.9
2	S8346KN020	3.94	-	20	1.3
2-1/2	S8346KN024	4.72	-	12	1.7
3	S8346KN030	5.12	-	5	2.0
4	S8346KN040	5.51	-	5	4.6

**Series 0384
PTFE Tape with Nickel**

- Use on Stainless Steel Threads
- 90% PTFE / 10% Nickel
- Melting Point 620°F (327°C)
- Thickness .0045 (±.0005)
- ISO 9001:2008 Manufacturer
- ASTM Mill Spec T-27730A



Size in	Part Number	Length in	Packing		Weight lb
			Inner	Master	
1/2	0384260G	260	100	600	0.02
3/4	0384260I	260	50	300	0.04

HVY PATTERN 150 #

Fig. S3714E & S3716E - 90° Elbow

Size in	Part Number		A in	Packing		Weight lb
	304	316		Inner	Master	
1/2	S3714E 004	S3716E 004	1.06	20	80	0.3
3/4	S3714E 006	S3716E 006	1.24	15	60	0.5
1	S3714E 010	S3716E 010	1.42	5	20	0.9
1-1/4	S3714E 012	S3716E 012	1.65	5	20	1.3
1-1/2	S3714E 014	S3716E 014	1.89	2	8	1.6
2	S3714E 020	S3716E 020	2.20	2	8	2.2
2-1/2	S3714E 024	S3716E 024	2.68	-	1	4.3
3	S3714E 030	S3716E 030	3.03	-	1	6.3

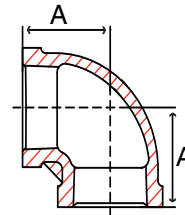


Fig. S3714F & S3716F - 45° Elbow

Size in	Part Number		A in	Packing		Weight lb
	304	316		Inner	Master	
1/2	S3714F 004	S3716F 004	0.87	30	120	0.2
3/4	S3714F 006	S3716F 006	1.00	20	80	0.4
1	S3714F 010	S3716F 010	1.12	10	40	0.6
1-1/4	S3714F 012	S3716F 012	1.31	5	20	1.0
1-1/2	S3714F 014	S3716F 014	1.43	4	16	1.5
2	S3714F 020	S3716F 020	1.68	2	8	2.0

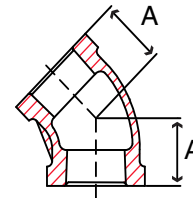


Fig. S3714T & S3716T - Tee

Size in	Part Number		A in	Packing		Weight lb
	304	316		Inner	Master	
1/2	S3714T 004	S3716T 004	1.06	20	80	0.4
3/4	S3714T 006	S3716T 006	1.24	10	40	0.7
1	S3714T 010	S3716T 010	1.42	5	20	1.1
1-1/4	S3714T 012	S3716T 012	1.65	2	8	1.9
1-1/2	S3714T 014	S3716T 014	1.89	2	8	2.1
2	S3714T 020	S3716T 020	2.20	-	1	3.3
2-1/2	S3714T 024	S3716T 024	2.68	-	1	5.9
3	S3714T 030	S3716T 030	3.03	-	1	9.3

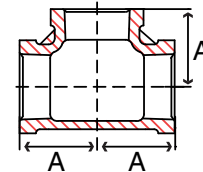


Fig. S3714U & S3716U - Union

Size in	Part Number		A in	B in	Packing		Weight lb
	304	316			Inner	Master	
1/2	S3714U 004	S3716U 004	1.46	1.46	20	80	0.4
3/4	S3714U 006	S3716U 006	1.56	1.81	10	40	0.5
1	S3714U 010	S3716U 010	1.85	2.05	5	20	0.9
1-1/4	S3714U 012	S3716U 012	2.05	2.52	2	8	1.3
1-1/2	S3714U 014	S3716U 014	2.19	2.76	2	8	2.0
2	S3714U 020	S3716U 020	2.50	3.39	2	8	3.0

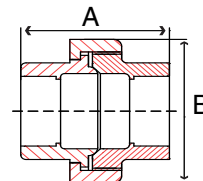


Fig. 3714RC & 3716RC - Reducing Coupling

Size in	Part Number		A in	Packing		Weight lb
	304	316		Inner	Master	
3/4 x 1/2	S3714RC006004	S3716RC006004	1.42	15	60	0.3
1 x 1/2	S3714RC010004	S3716RC010004	1.54	15	60	0.6
1 x 3/4	S3714RC010006	S3716RC010006	1.57	15	60	0.6
1-1/4 x 1	S3714RC012010	S3716RC012010	1.77	10	40	0.7
1-1/2 x 1	S3714RC014010	S3716RC014010	1.85	10	40	0.8
1-1/2 x 1-1/4	S3714RC014012	S3716RC014012	1.93	10	40	0.8
2 x 1	S3714RC020010	S3716RC020010	1.93	2	8	1.6
2 x 1-1/2	S3714RC020014	S3716RC020014	2.01	2	8	1.6

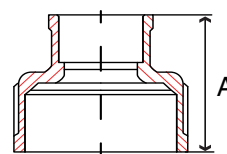
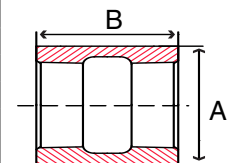


Fig. 3714CP & 3716CP - Full Coupling

Size in	Part Number		A in	B in	Packing		Weight lb
	304	316			Inner	Master	
1/2	S3714CP004	S3716CP004	1.20	1.38	50	200	0.1
3/4	S3714CP006	S3716CP006	1.46	1.50	35	140	0.2
1	S3714CP010	S3716CP010	1.77	1.62	15	60	0.4
1-1/4	S3714CP012	S3716CP012	2.15	2.00	10	40	0.5
1-1/2	S3714CP014	S3716CP014	2.43	2.12	10	40	0.6
2	S3714CP020	S3716CP020	2.96	2.50	2	8	1.3
2-1/2	S3714CP024	S3716CP024	3.31	2.87	-	1	2.3
3	S3714CP030	S3716CP030	4.00	3.18	-	1	3.3



STANDARD 150#

About ASC Engineered Solutions

ASC Engineered Solutions is defined by quality—in its products, services and support. With more than 1,400 employees, the company’s portfolio of precision-engineered piping support, valves and connections provides products to more than 4,000 customers across industries, such as mechanical, industrial, fire protection, oil and gas, and commercial and residential construction. Its portfolio of leading brands includes ABZ Valve®, AFCON®, Anvil®, Anvil EPS, Anvil Services, Basic-PSA, Beck®, Catawissa, Cooplet®, FlexHead®, FPPI®, Gruvlok®, J.B. Smith, Merit®, North Alabama Pipe, Quadrant®, SCI®, Sharpe®, SlideLOK®, SPF® and SprinkFLEX®. With headquarters in Commerce, CA, and Exeter, NH, ASC also has ISO 9001:2015 certified production facilities in PA, TN, IL, TX, AL, LA, KS, and RI.



asc-es.com

Building connections that last™

