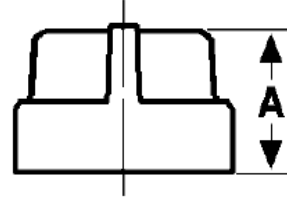




Cap
300# Malleable Iron
Inches / Pounds



Size	A	Approximate Weight (in Pounds)
1/4	0.78	0.10
3/8	0.83	0.15
1/2	0.98	0.23
3/4	1.08	0.35
1	1.26	0.58
1 1/4	1.38	0.94
1 1/2	1.43	1.18
2	1.68	1.94
2 1/2	2.06	3.32
3	2.17	4.71
4	2.48	7.68

****Malleable Castings conform to ASTM A197***

****Hot-Dipped Galvanized Fittings conform to ASTM A153***

****Malleable Fitting Dimensions conform to ASME B16.3***

****Malleable Bushings, Plugs and Locknuts conform to ASME B16.14***

****Malleable Unions conform to ASME B16.39***

****NPT Threads on all fittings conform to ASME B1.20.1***