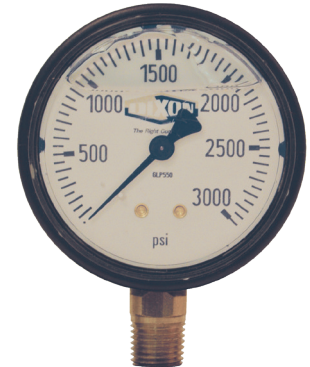


ABS Case Liquid Filled Gauges

Feature

- ASME B40.100, Grade B (± 3-2-3% accuracy)

PSI Range	Figure Interval	Minor Gradient	2-1/2" Face 1/4" Lower Mount Part #
0-15	3	.2	GLP500
0-30	5	.5	GLP505
0-60	10	1	GLP510
0-100	20	2	GLP515
0-160	20	2	GLP517
0-200	50	5	GLP520
0-300	50	5	GLP525
0-400	100	10	GLP527
0-600	100	10	GLP530
0-1000	200	20	GLP535
0-1500	300	20	GLP540
0-2000	500	50	GLP545
0-3000	500	50	GLP550
0-5000	1000	100	GLP555



F

Stainless Case Liquid Filled Gauges

Features

- PowerFlex™ movement with polyester segment designed to resist the effects of shock, vibration, and pulsation
- ASME B40.100, Grade A (± 2-1-2% accuracy)
- 1/4" NPT brass connection

Materials

- Copper alloy bourdon tube
- White aluminum dial with black numbers and black aluminum pointer
- Glycerin filled
- Polycarbonate window

Specification

- Temperature range: -4°F to 150°F (-20°C to 65°C)

PSI Range	Figure Interval	Minor Gradient	2-1/2" Face 1/4" Center Back Mount Part #	2-1/2" Face, 1/4" Lower Mount Part #
0-15	3	.5	GLSC400	GLS400
0-30	5	.5	GLSC405	GLS405
0-60	10	1	GLSC410	GLS410
0-100	20	2	GLSC415	GLS415
0-160	20	2	GLSC417	GLS417
0-200	40	5	GLSC420	GLS420
0-300	50	5	GLSC425	GLS425
0-400	50	5	GLSC427	GLS427
0-600	100	10	GLSC430	GLS430
0-1000	200	10	GLSC435	GLS435
0-1500	300	50	GLSC440	GLS440
0-2000	400	20	GLSC445	GLS445
0-3000	500	50	GLSC450	GLS450
0-5000	1000	100	GLSC455	GLS455



GLSC420



GLS430